

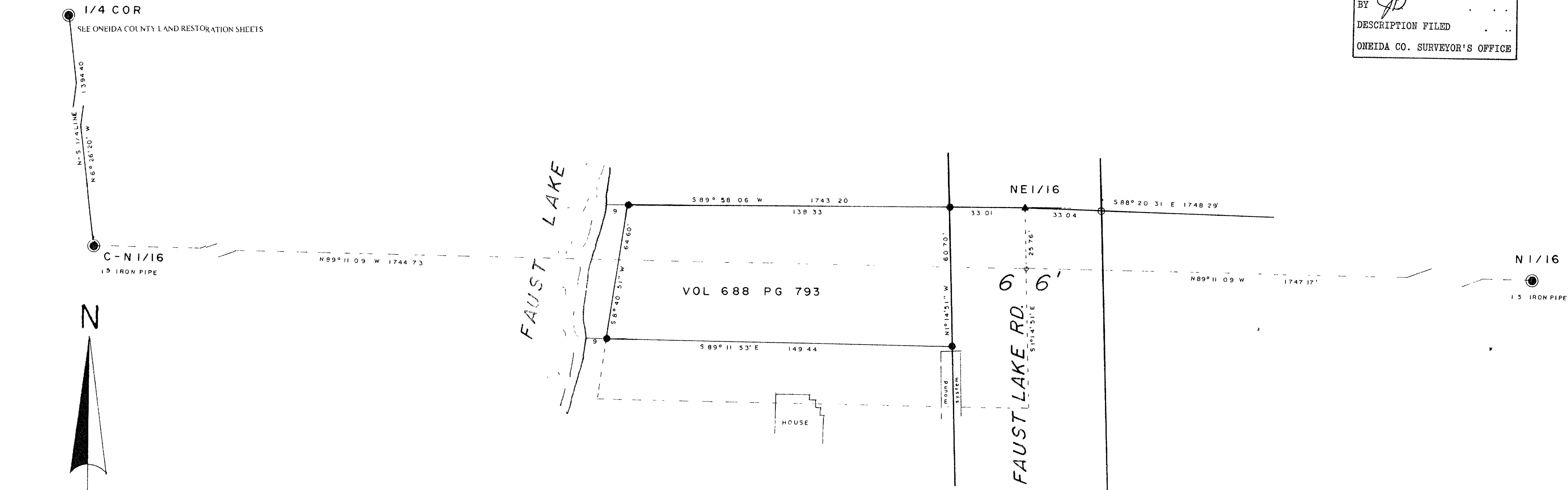
MAP # B3959

DATE FILED AUG 03 1998

BY JB

DESCRIPTION FILED

ONEIDA CO. SURVEYOR'S OFFICE

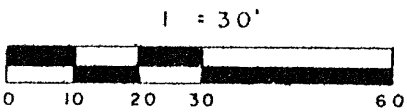


PART OF THE S W 1/4, N E 1/4,  
SECTION 9, T. 36 N., R. 9 E.,  
ONEIDA COUNTY, WI.

LEGEND

- SUBDIVISIONAL MONUMENT OF RECORD
- ▲ NE 1/16 OF RECORD FOUND P K NAIL
- FOUND 1" IRON PIPE
- SET 1" IRON PIPE
- NE 1/16 POSITION BY USING STRAIGHT LINE BETWEEN THE C-N 1/16 CORNER OF RECORD AND THE N 1/16 CORNER EAST LINE OF RECORD

SCALE



I, Todd Loftus, Registered Land Surveyor, hereby certify that I have surveyed the property shown hereon. That this map represents an accurate survey of said property to the best of my knowledge & belief. That I have performed this survey by order of Charles Kay and that I have complied with the applicable requirements of the Wisconsin Administrative Code A L 7.

Description required for above parcel is on separate sheet.

DATE 3-20-98

SIGNED Todd Loftus

LOFTUS SURVEYING



IT IS THIS SURVEYORS OPINION THAT THE DEED AS DRAFTED STARTED FROM THE N E 1/16 CORNER OF RECORD.

NORTH IS REFERENCED TO THE N-S 1/4 LINE BEING A MAGNETIC BEARING OF N 6° 26' 20" W.

1179B4