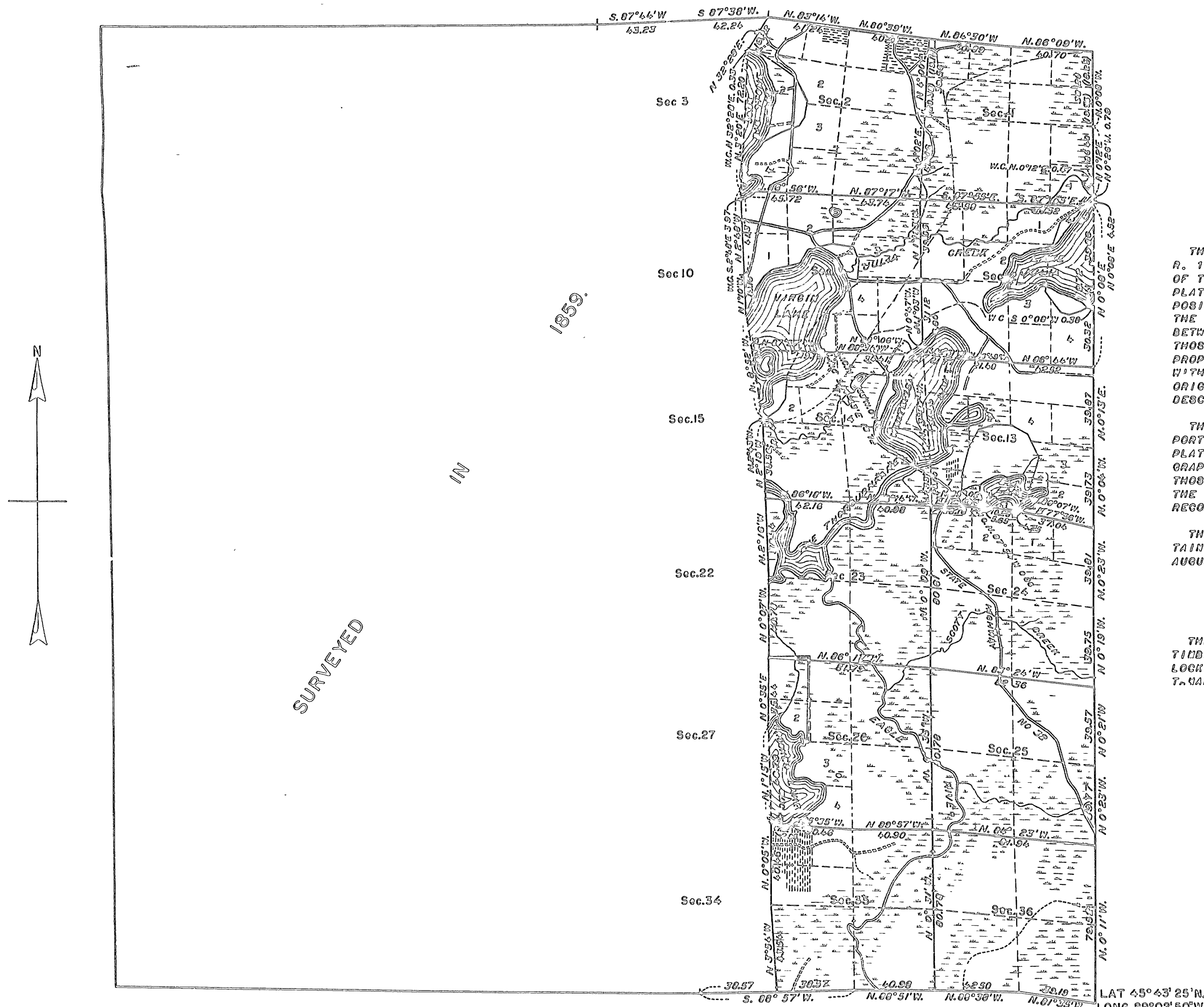


TOWNSHIP NO. 38 NORTH, RANGE NO. 11 EAST, OF THE FOURTH PRINCIPAL MERIDIAN, WISCONSIN.

DEPENDENT RESURVEY OF SECTIONS 1, 2, 11 TO 14, 23 TO 26, 35, AND 36.

RECEIVED & FILED # **4**
 Oneida County Surveyor's Office
 Date
 By
 OCS Area #



MEMORANDUM.

THIS PLAT OF THE RESURVEY OF A PORTION OF T. 38 N., R. 11 E., DELINEATES A RETRACEMENT AND REESTABLISHMENT OF THE LINES OF THE ORIGINAL SURVEY AS SHOWN UPON THE PLAT APPROVED DECEMBER 20, 1899, IN THEIR TRUE ORIGINAL POSITIONS ACCORDING TO THE BEST AVAILABLE EVIDENCE OF THE POSITION OF THE ORIGINAL CORNERS. ALL DIFFERENCES BETWEEN THE MEASUREMENTS SHOWN ON THE ORIGINAL PLAT AND THOSE DERIVED IN THE RETRACEMENT HAVE BEEN DISTRIBUTED PROPORTIONALLY BETWEEN ACCEPTED CORNERS IN ACCORDANCE WITH SURVEYING RULES. REFERENCE WILL BE MADE TO THE ORIGINAL PLAT FOR THE SHOWING OF AREAS AND MORE DETAILED DESCRIPTIONS OF THE VARIOUS SMALLER SUBDIVISIONS.

THE ACTUAL SHORE LINES OF THE SEVERAL LAKES IN THE PORTION OF THE TOWNSHIP RESURVEYED, ARE SHOWN ON THE PLAT AS DERIVED FROM FIELD TRAVERSES AND AERIAL PHOTOGRAPHS PROPERLY COORDINATED WITH GROUND CONTROL. IN THOSE CASES WHERE MATERIAL DIFFERENCES EXIST BETWEEN THE RECORD MEASUREMENTS AND THE ACTUAL SHORE LINES, THE RECORD MEASUREMENTS ARE ALSO SHOWN IN BLACK.

THE RESURVEY WAS EXECUTED PURSUANT TO AUTHORITY CONTAINED IN GENERAL LAND OFFICE LETTER 1896603 "E" DATED AUGUST 8, 1941.

THE AREA RESURVEYED HAS A FAIR STAND OF SECOND-GROWTH TIMBER, CONSISTING MAINLY OF NORWAY AND WHITE PINE, HEDLOCK, BIRCH, MAPLE, AND POPLAR ON THE UPLAND, WITH SPRUCE, T. MARACK, AND CEDAR IN THE SWAMPS.

0 5 10 20 40 60
 SCALE: 1 INCH EQUALS 40 CHAINS

MEAN MAGNETIC DECLINATION, 2° 45' E
 AREA RESURVEYED, 6,989.32 ACRES.

LINES DESIGNATED	BY WHOM SURVEYED	GROUP NO.	DATE OF SPECIAL INSTRUCTIONS	WHEN SURVEYED	
				BEGUN	COMPLETED
EXTERIOR SUBDIVISIONAL	HUGH B. CRAWFORD	51	AUGUST 25, 1941.	AUGUST 21, 1941.	OCTOBER 25, 1941.

W.N.R.

UNITED STATES DEPARTMENT OF THE INTERIOR.
 GENERAL LAND OFFICE.

DENVER, COLORADO, OCTOBER 1, 1943.
 THIS PLAT OF TOWNSHIP NO. 38 NORTH, RANGE NO. 11 EAST, OF THE FOURTH PRINCIPAL MERIDIAN, WISCONSIN, IS STRICTLY CONFORMABLE TO THE FIELD NOTES OF THE SURVEY THEREOF, WHICH HAVE BEEN EXAMINED AND APPROVED.

W. H. Johnson
 SUPERVISOR OF SURVEYS.

WASHINGTON, D. C., NOVEMBER 9, 1943.
 THE SURVEY REPRESENTED BY THIS PLAT, HAVING BEEN CORRECTLY EXECUTED IN ACCORDANCE WITH THE REQUIREMENTS OF LAW AND THE REGULATIONS OF THIS OFFICE, IS HEREBY ACCEPTED.

Joel David Wolfson
 ASSISTANT COMMISSIONER.

TOPOGRAPHY WITHIN SECTIONS COMPILED FROM AERIAL PHOTOGRAPHS AND COORDINATED WITH SECTION LINE CONTROL OBTAINED DURING SURVEY.

W. H. Johnson