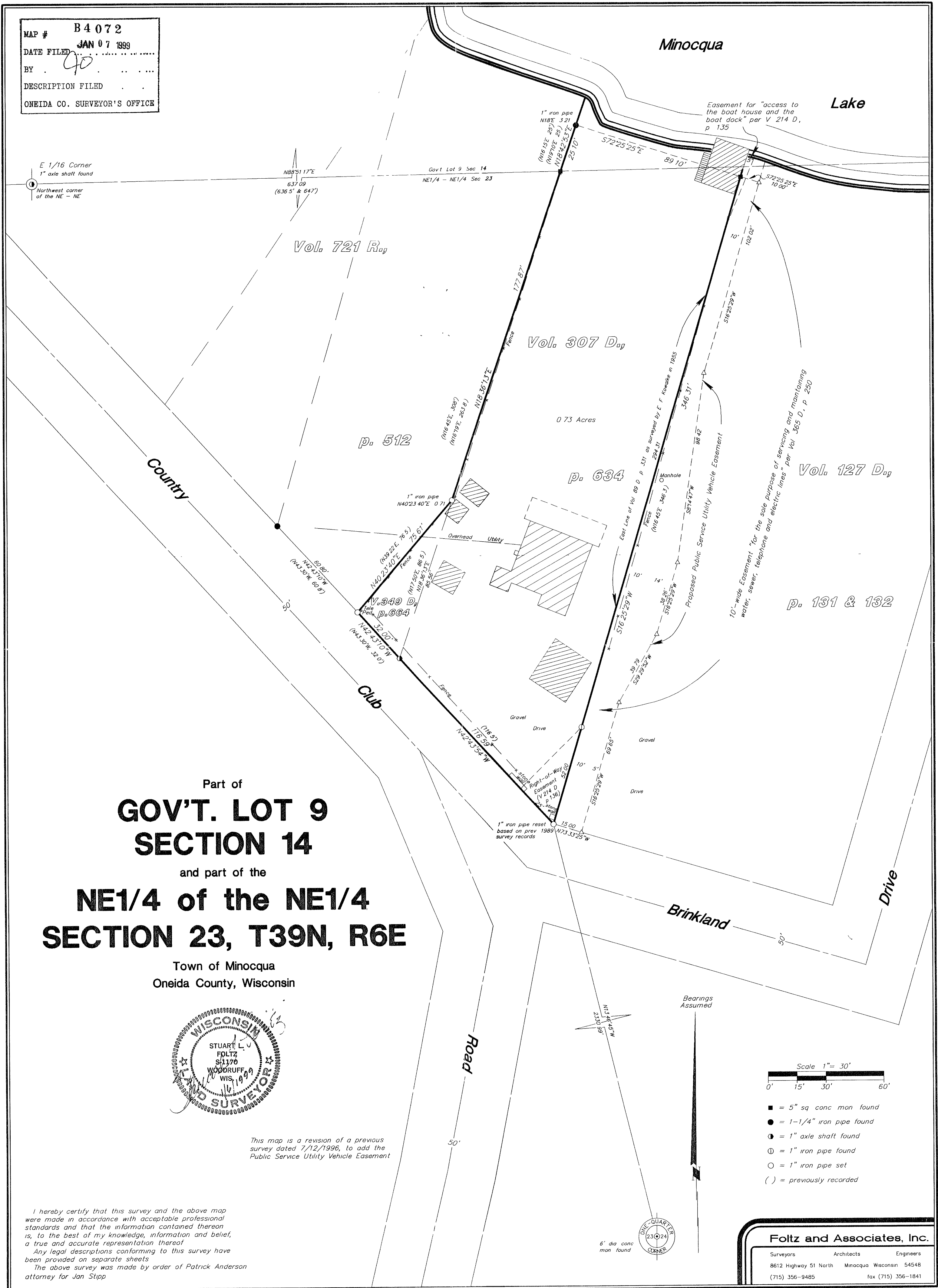
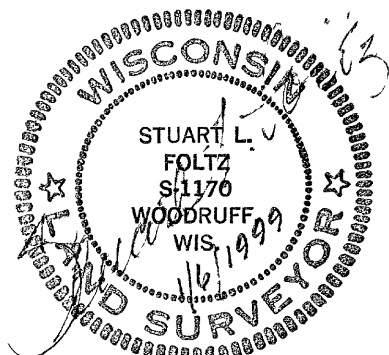


MAP # **B4072**  
 DATE FILED **JAN 07 1999**  
 BY **90**  
 DESCRIPTION FILED  
 ONEIDA CO. SURVEYOR'S OFFICE



Part of  
**GOV'T. LOT 9**  
**SECTION 14**  
 and part of the  
**NE1/4 of the NE1/4**  
**SECTION 23, T39N, R6E**

Town of Minocqua  
 Oneida County, Wisconsin



This map is a revision of a previous survey dated 7/12/1996, to add the Public Service Utility Vehicle Easement

I hereby certify that this survey and the above map were made in accordance with acceptable professional standards and that the information contained thereon is, to the best of my knowledge, information and belief, a true and accurate representation thereof.  
 Any legal descriptions conforming to this survey have been provided on separate sheets.  
 The above survey was made by order of Patrick Anderson attorney for Jan Stipp

**Foltz and Associates, Inc.**

Surveyors Architects Engineers  
 8612 Highway 51 North Minocqua Wisconsin 54548  
 (715) 356-9485 fax (715) 356-1841

C. Winkler 16-14-396 & 1-23-369