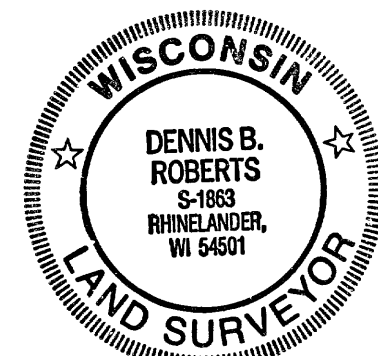
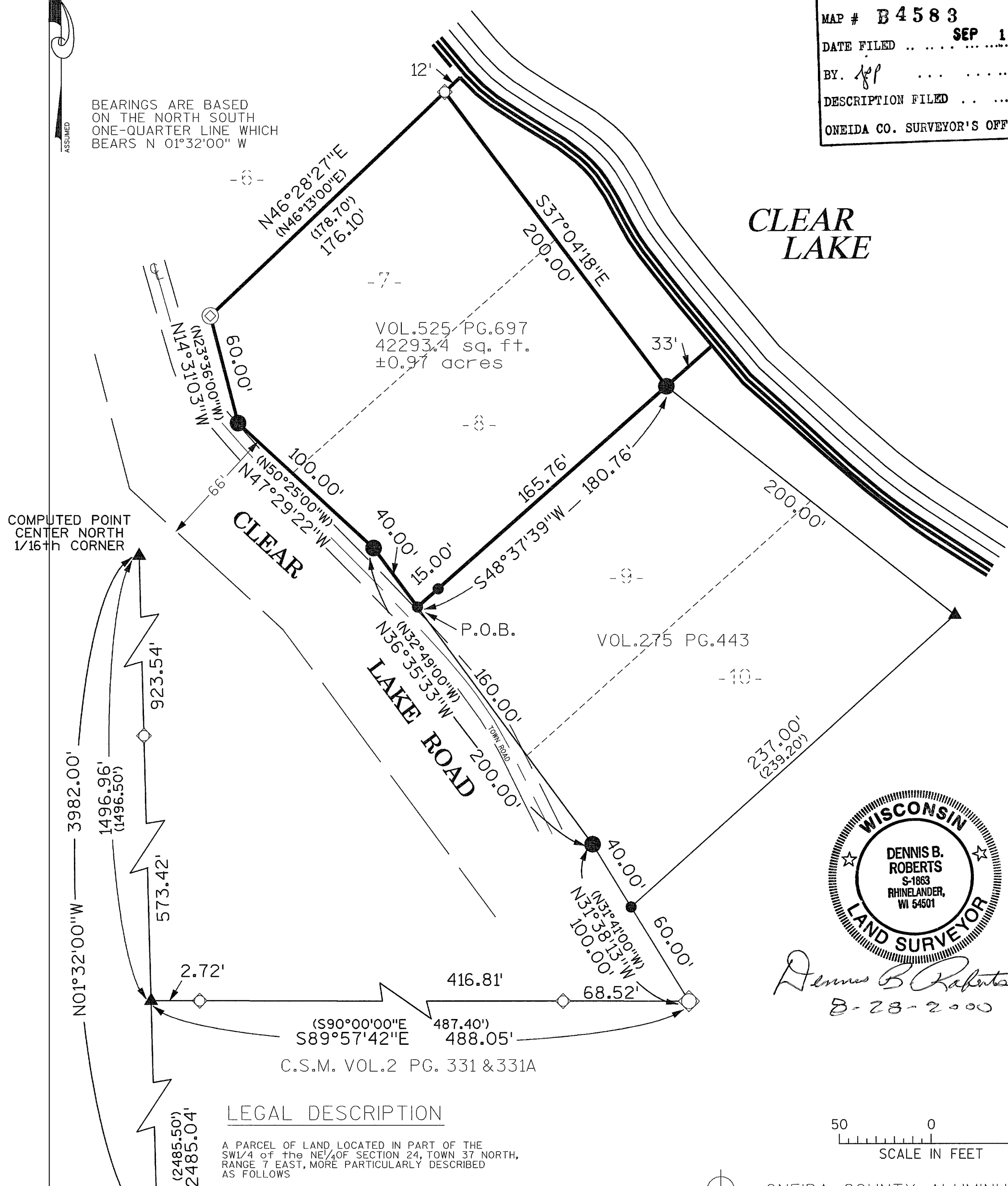


A MAP OF SURVEY FOR MIKE NELSON
BEING LOTS 7 & 8
FROM THE 1960's SURVEY FOR TONY WHITE
PART OF THE SW¹/₄ of the NE 1⁴/₄
SECTION 24, TOWN 37 NORTH, RANGE 7 EAST,
CASSIAN TOWNSHIP,
ONEIDA COUNTY, WISCONSIN

MAP # B 4583
DATE FILED ... SEP 1 2000
BY. *Asp* ...
DESCRIPTION FILED ...
ONEIDA CO. SURVEYOR'S OFFICE



Dennis B. Roberts
8-28-2000

SOUTH 1/4 CORNER
SECTION 24
ONEIDA COUNTY
MONUMENT
STAMPED TO
IDENTIFY CORNER

MSA
PROFESSIONAL SERVICES

TRANSPORTATION • MUNICIPAL • REMEDIATION
DEVELOPMENT • ENVIRONMENTAL

1835 N Stevens St Rhinelander, WI 54501
715-862-3244 1-800-844-7854 Fax 715-362-4116

- ⊕ ONEIDA COUNTY ALUMINUM MONUMENT
- ◇ 2" DIAMETER IRON PIPE, FOUND
- ⊙ 1/2" DIAMETER IRON PIPE, FOUND
- ◊ 1" DIAMETER IRON PIPE, FOUND
- 1/4" DIAMETER IRON ROD, SET
- 3/4" DIAMETER IRON ROD, SET
- ▲ COMPUTED POINT
- () RECORDED AS