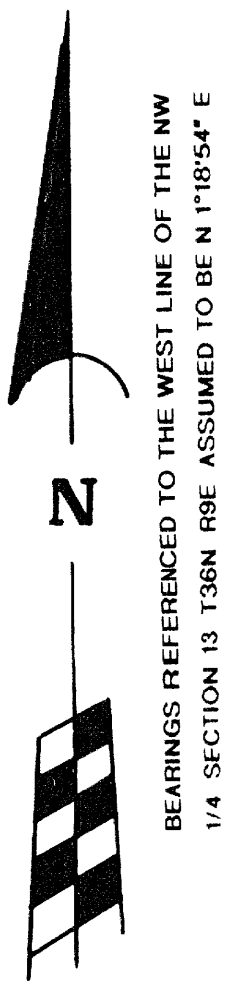


PART OF

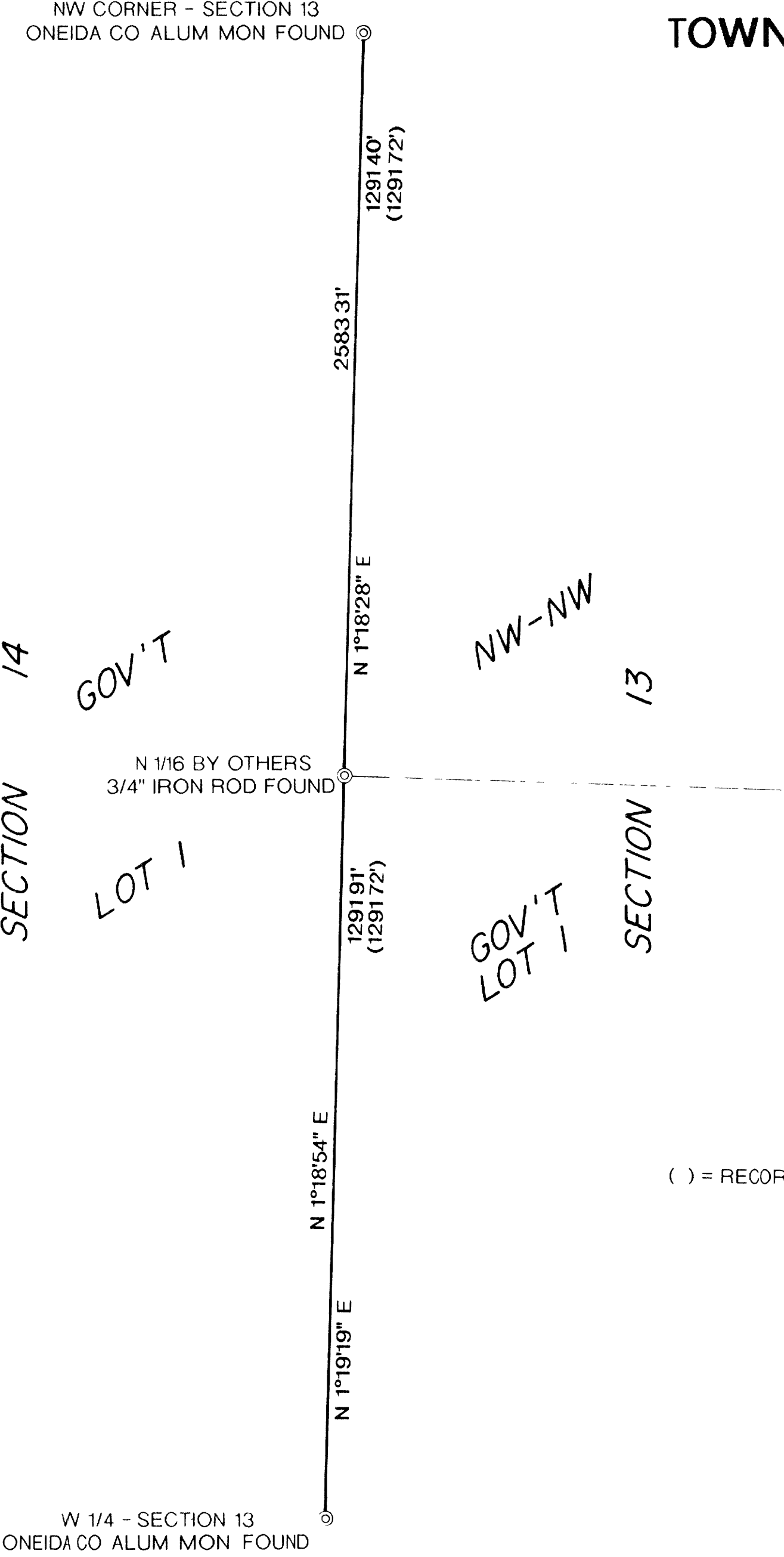
GOV'T LOT 1, SECTION 13, T36N, R9E,
TOWN OF PELICAN, ONEIDA COUNTY, WISCONSIN

B4664

MAP #	B4664
DATE FILED	DEC 29 2000
BY	JT
DESCRIPTION FILED	
ONEIDA CO. SURVEYOR'S OFFICE	



BEARINGS REFERENCED TO THE WEST LINE OF THE NW
1/4 SECTION 13 T36N R9E ASSUMED TO BE N 1°18'54" E



() = RECORDED AS

I WILLIAM E BANDOW HEREBY CERTIFY THAT I HAVE SURVEYED
THE ABOVE LINE UNDER THE DIRECTION OF JIM FORSYTH, THAT
THE ABOVE MAP IS A TRUE AND CORRECT REPRESENTATION OF
THE LINE SURVEYED TO THE BEST OF MY KNOWLEDGE AND BELIEF
AND THAT I HAVE COMPLIED WITH THE PROVISIONS OF A E 7 OF
THE WISCONSIN ADMINISTRATIVE CODE

William E. Bandow 9-26-00
WILLIAM E BANDOW DATE

	SURVEY FOR	
	JIM FORSYTH	
	SCALE 1" = 200'	DATE 26SEP00 DWN BY KAZ
DWG NO 10207	GENISOT AND ASSOCIATES, INC. RHINELANDER, WIS	