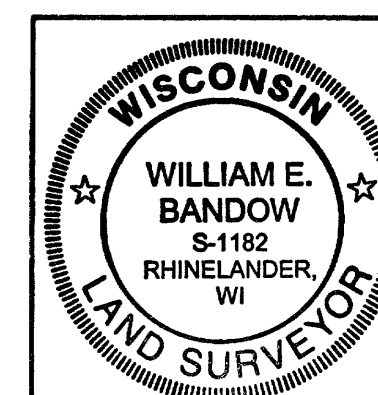
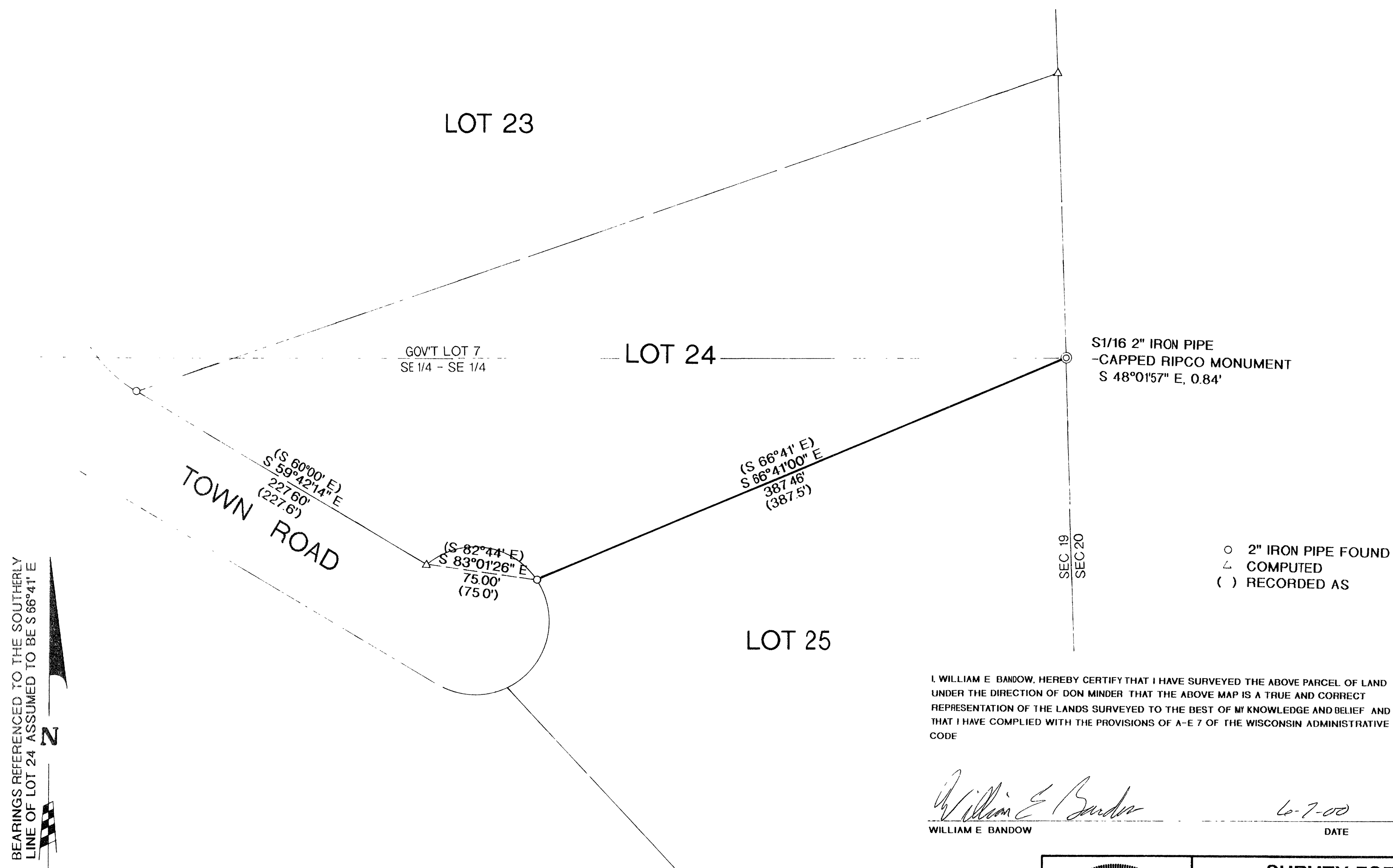


LOCATED IN
GOV'T LOT 7 & SE1/4 of the SE1/4
SECTION 19, T37N, R9E,
TOWN OF PINE LAKE,
ONEIDA COUNTY, WISCONSIN

MAP # B4670
DATE FILED DEC 29 2000
BY J.S.R.
DESCRIPTION FILES.
ONEIDA CO. SURVEYOR'S OFFICE



SURVEY FOR
DON MINDER

SCALE 1"=100' DATE JUNE 7, 2000 DWN BY KAZ
DWG NO. 10134 GENISOT AND ASSOCIATES, INC.
RHINELANDER, WIS