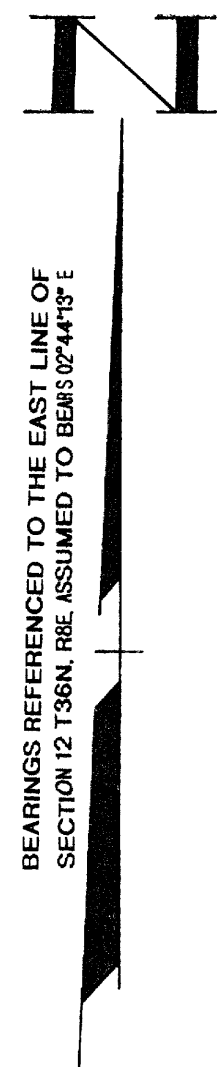
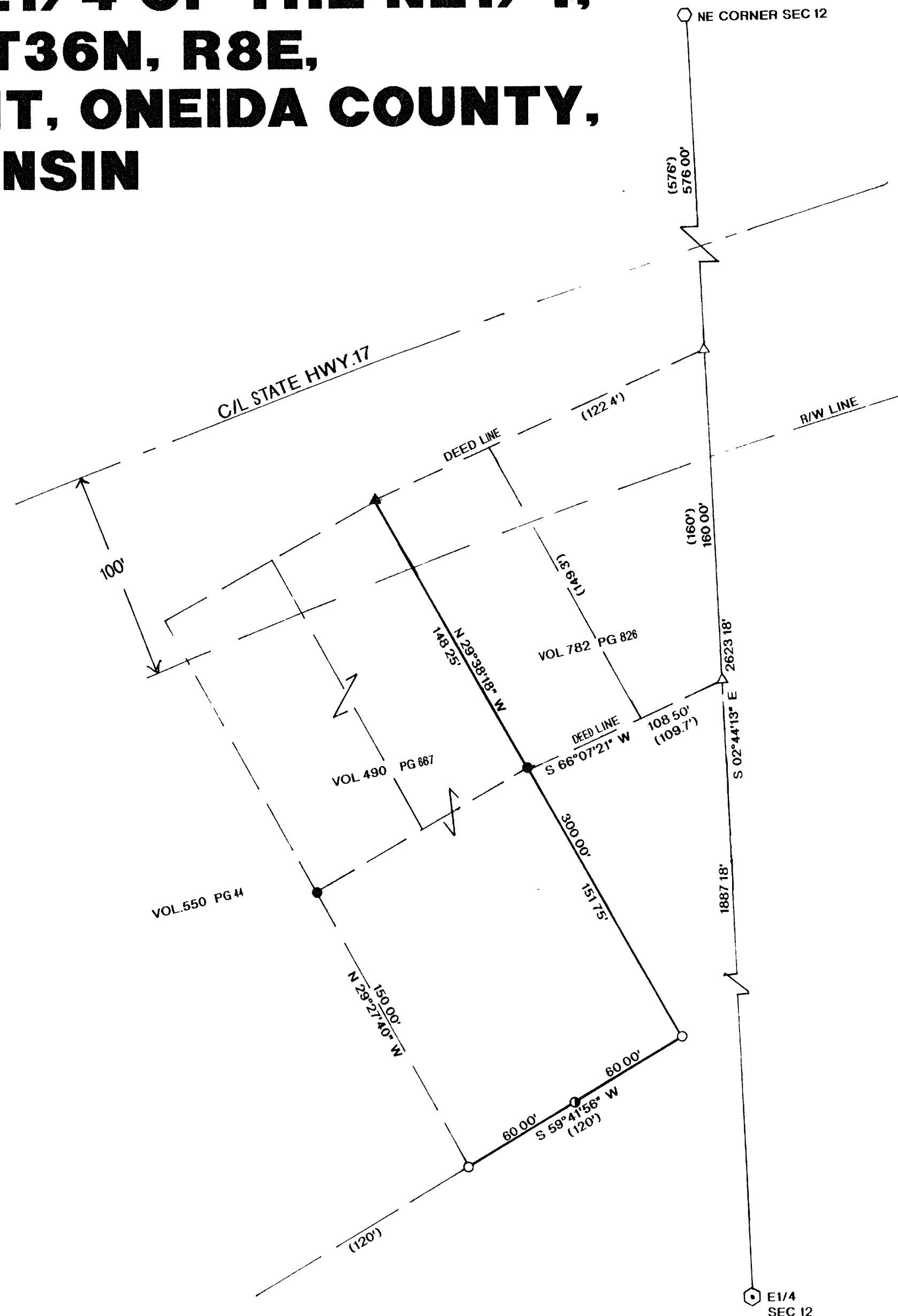


# IN PART OF THE NE1/4 OF THE NE1/4, SECTION 12, T36N, R8E, TOWN OF CRESCENT, ONEIDA COUNTY, WISCONSIN



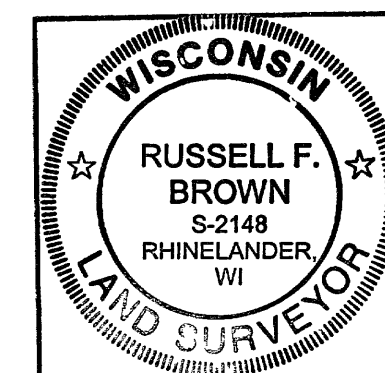
## LEGEND:

- FOUND 1 1/4" IRON PIPE
- FOUND 1" IRON PIPE
- SET 1"X 24" IRON PIPE
- ▲ SET P.K. NAIL
- △ CALCULATED POSITION
- ( ) RECORDED AS
- ONEIDA COUNTY MONUMENT
- 2" BRASS CAPPED MONUMENT

MAP # B4724	
DATE FILED	MAR 27 2001
BY	<i>fb</i>
DESCRIPTION FILED	
ONEIDA CO. SURVEYOR'S OFFICE	

RUSSELL F. BROWN HEREBY CERTIFY THAT I HAVE SURVEYED THE ABOVE LINE UNDER THE DIRECTION OF DEXTER MUSSON AND THAT THE ABOVE MAP IS A TRUE AND CORRECT REPRESENTATION OF THE LANDS SURVEYED TO THE BEST OF MY KNOWLEDGE AND BELIEF THAT I HAVE COMPLIED WITH THE PROVISIONS OF AE 7 OF THE WISCONSIN ADMINISTRATIVE CODE

*Russell F. Brown* 1/19/01  
RUSSELL F. BROWN DATE



SURVEY FOR	
MUSSON BROTHERS INC.	
SCALE 1"= 50'	DATE 5/30/2000 DWN BY JB
DWG NO 10145	GENISOT AND ASSOCIATES, INC. RHINELANDER, WIS