

B5112

B5112

- NOTE 1) All lots and blocks are hereby restricted so that no owner, possessor, user, licensee or other person may have any right of direct vehicular ingress from or egress to any highway lying within the right-of-way of STH "70", it is expressly intended that this restriction constitute a restriction for the benefit of the public as provided in s. 236.293, Wis. Stats., and shall be enforceable by the department or its assigns. Any access shall be allowed only by special exception. Any access allowed by special exception shall be confirmed and granted only through the driveway permitting process and all permits are revocable.
- 2) No improvements or structures are allowed between the right-of-way line and the setback line. Improvements and structures include, but are not limited to, signs, parking areas, driveways, wells, septic systems, drainage facilities, buildings and retaining walls. It is expressly intended that this restriction is for the benefit of the public as provided in s. 236.293, Wis. Stats., and shall be enforceable by the department or its assigns. Contact the Wis. Dept. of Trans. for more information. The phone number may be obtained by contacting the County Highway Department.
- 3) The Wisconsin Department of Transportation has granted a Special Exception to Trans. 233 for the existing driveway access, as shown on this map, with the condition that it serve as RESIDENTIAL use only. Additional land divisions, change in land use, or future highway project(s) may require a public road intersection or relocation of the driveway to an alternative public road at the discretion of the department.

Wisconsin Department of Transportation  
approval number 43-070-25902

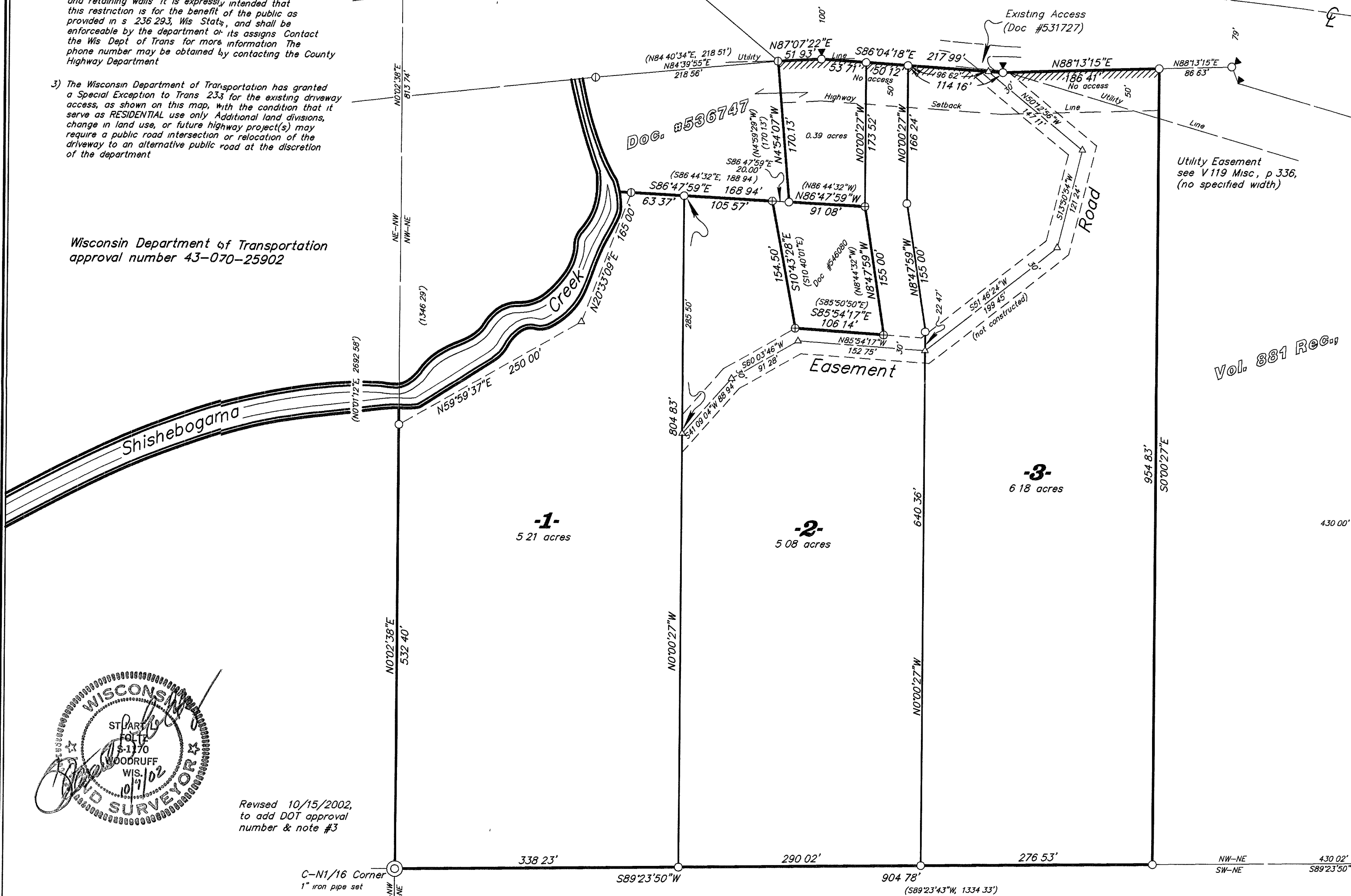
# Part of the NW1/4 of the NE1/4 SECTION 12, T39N, R5E

Town of Minocqua  
Oneida County, Wisconsin

State

Highway

"70"



Scale 1" = 100'

Oneida County Surveyor's Map #B5112.

Foltz and Associates, Inc.

Surveyors Engineers  
8612 Highway 51 North, Minocqua, Wisconsin 54548  
(715) 356-9485 fax (715) 356-1841

C Winkler 2-12-395

B5112

B5112