

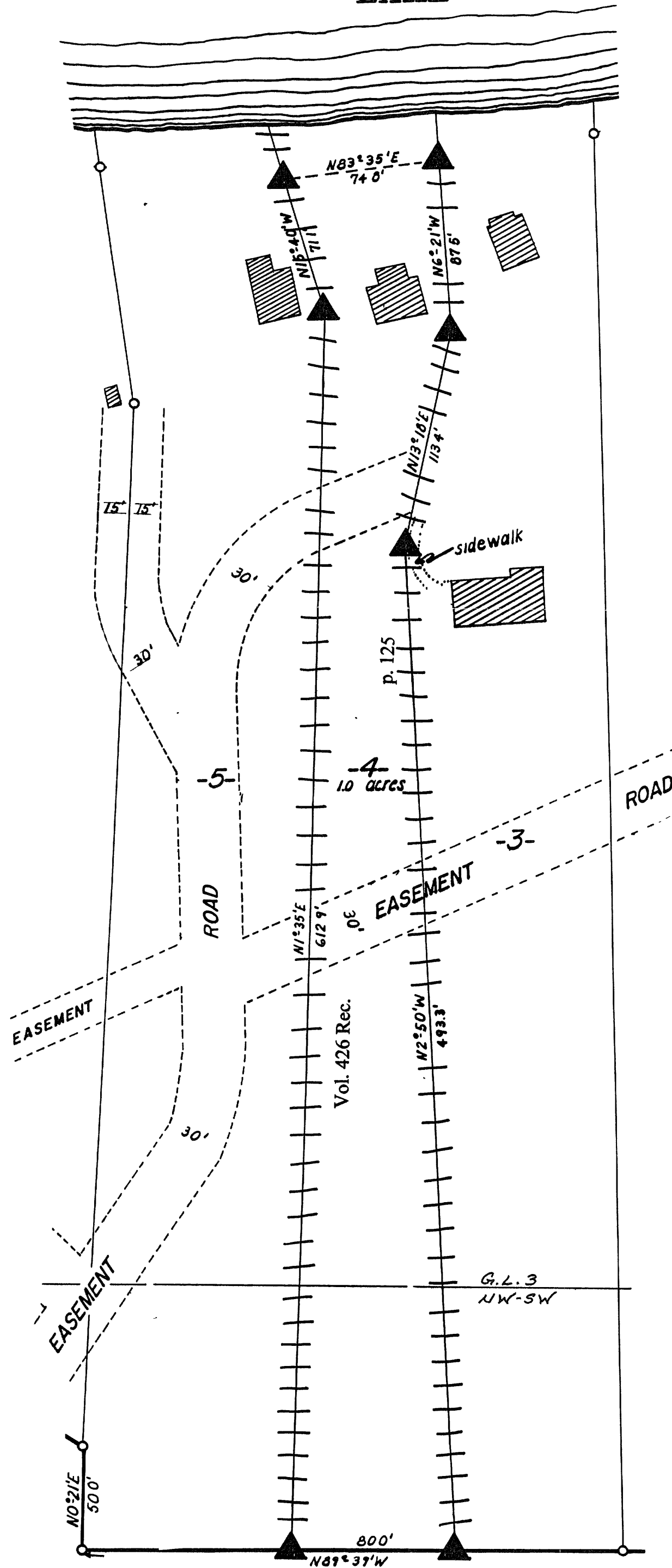
B5149

B5110

**Part of  
Gov't Lot 3  
and part of the  
NW¼ of the SW¼  
Section 20, T39N, R5E  
Town of Minocqua  
Oneida County, Wisconsin**

***SQUIRREL***

**LAKE**



Bearings and distances  
shown are from a survey by  
Northwoods Surveyors Inc  
dated April, 1974

Scale: 1" = 50'



October 2, 2002

Recovered, verified, and marked the corners on Lot 4 and marked the approximate lot lines, as follows.

▲ = Iron monument found in place

||| = Lot lines marked approximately  
with fluorescent flagging ribbon

This survey was completed by Foltz and Associates, Inc for the purpose of locating existing lot corners and flagging approximate lot lines by the order of Joseph Wacławik, who has executed a written waiver for all other requirements of Wis. Adm. Code Chap. A-E 7. A closed traverse was not made and the minimum accuracy is 1 part in 100 and plus or minus 2°.

MAP # B5119  
DATE FILED OCT 18 2002  
BY J.P.  
DESCRIPTION FILED  
ONEIDA CO. SURVEYOR'S OFFICE

615

Foltz and Associates, Inc

Surveyors	Engineers
8612 Highway 51 North	Minocqua, Wisconsin 54548
(715) 356-9485	fax (715) 356-1841