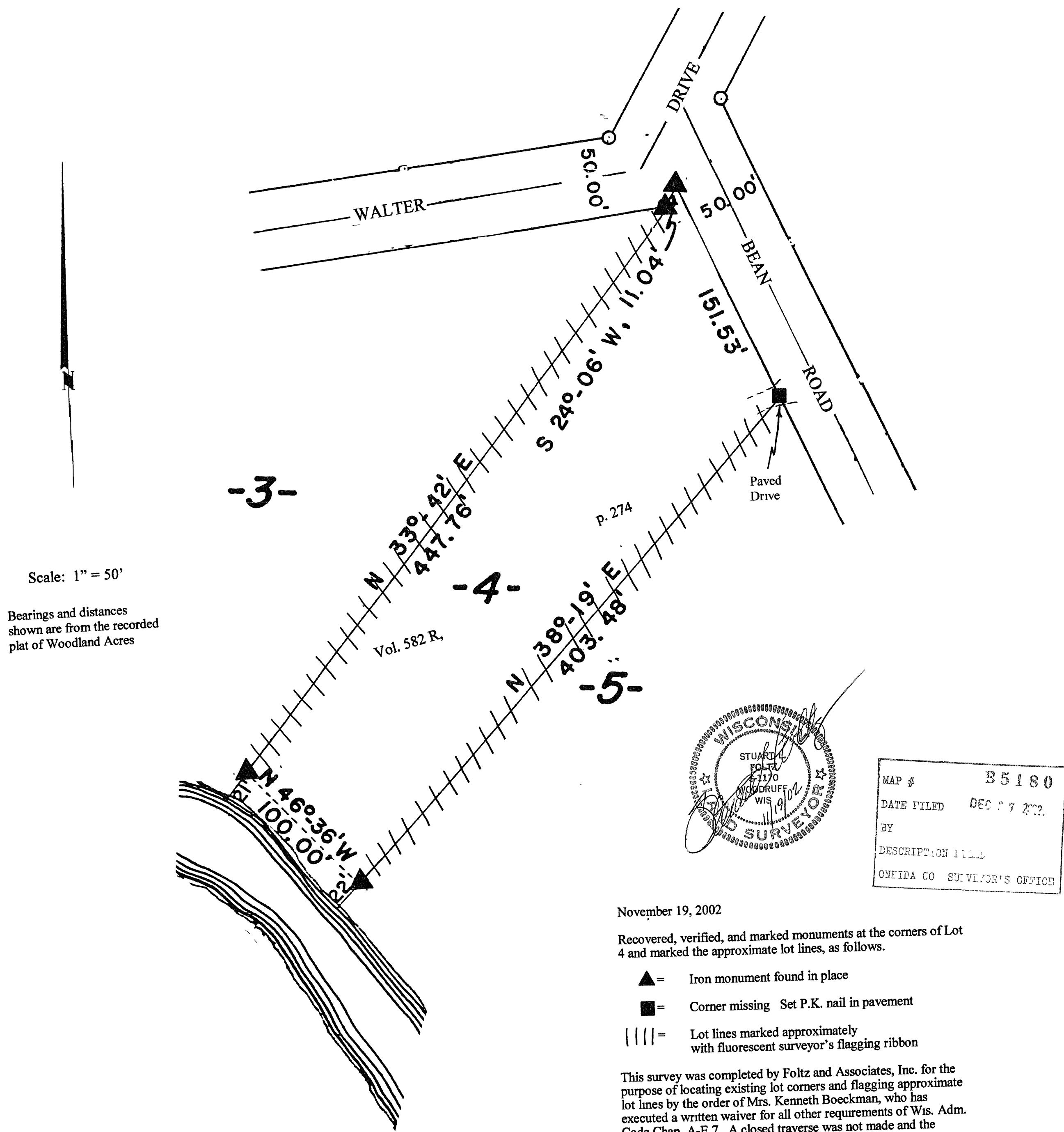


B5180

B5180

Lot 4 of
Woodland Acres
in
Gov't. Lot 3
Section 29, T39N, R7E
Town of Woodruff
Oneida County, Wisconsin



Foltz and Associates, Inc.

Surveyors Engineers

8612 Highway 51 North, Minocqua, Wisconsin 54548

(715) 356-9485 fax (715) 356-1841

B5180

B5180