

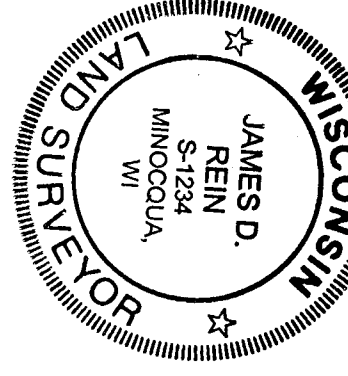
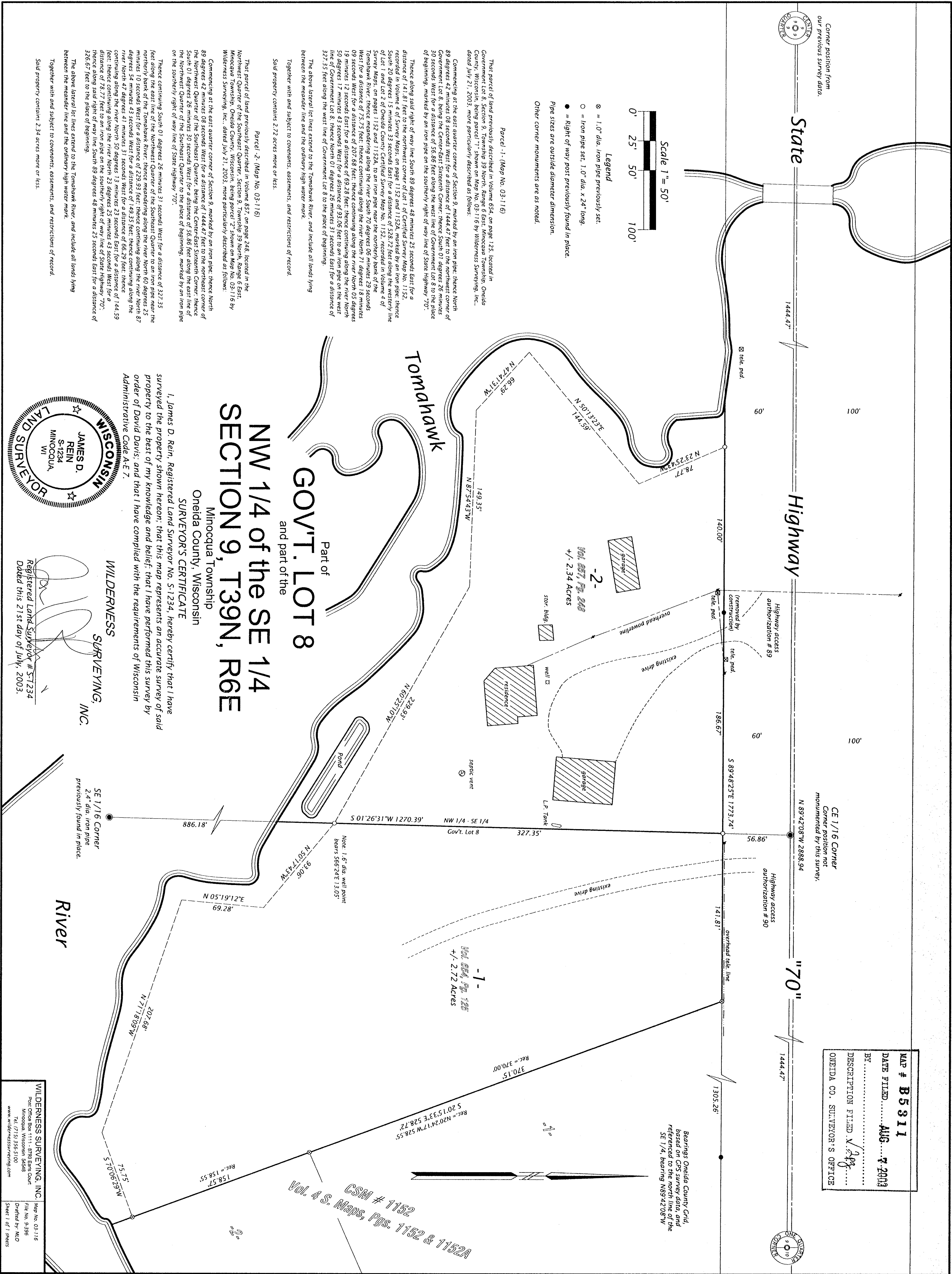
MAP # **B5311**

DATE FILED.....**AUG 4 2003**

BY.....**WJS**

DESCRIPTION FILED **N 1/4**.....

ONEIDA CO. SURVEYOR'S OFFICE



WILDERNESS SURVEYING, INC.
SE 1/16 Corner
2.4" dia. iron pipe
previously found in place.

WILDERNESS SURVEYING, INC.
Map No. 03-116
Port Oneida Box 1111 - 8785 EMS Court
Oneida, WI 54988
Phone: (715) 355-5100
www.wildernesssurveying.com

File No. P-396
Drafted by M.O.
Sheet 1 of 1 JAMES