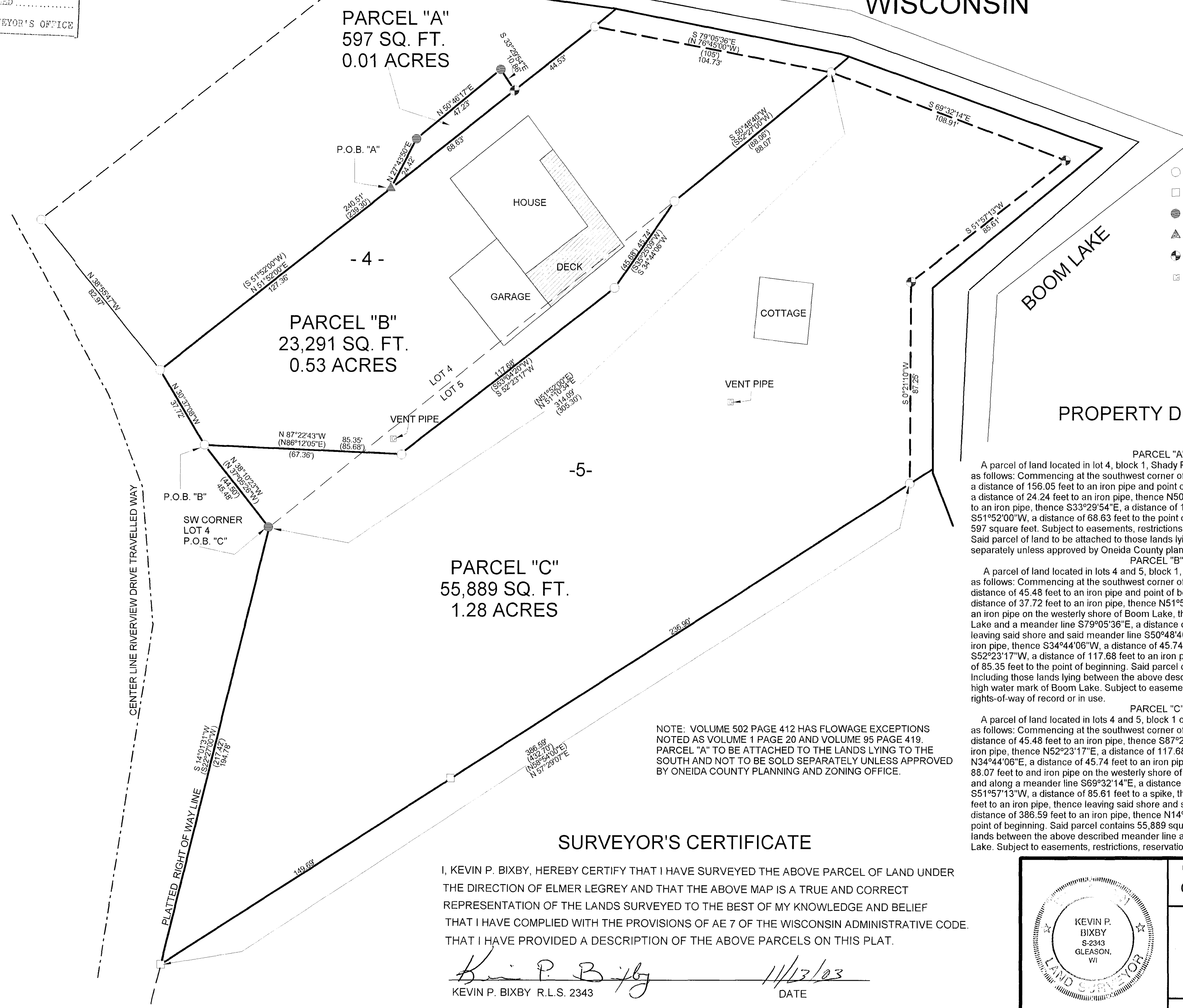


LOCATED IN LOTS 4 & 5 BLOCK 1, SHADY POINT
SUBDIVISION, SECTION 31, T37N, R9E, TOWN
OF PINE LAKE, ONEIDA COUNTY,
WISCONSIN

MAP # B 5 3 9 1
DATE FILED 0 5 2003
BY: [Signature]
DESCRIPTION FILED
ONEIDA CO. SURVEYOR'S OFFICE



BEARINGS REFERENCE TO THE SOUTH LINE LOT 4, BLOCK 1,
SHADY POINT SUBDIVISION, ASSUMED TO BEAR, N51°10'34"E