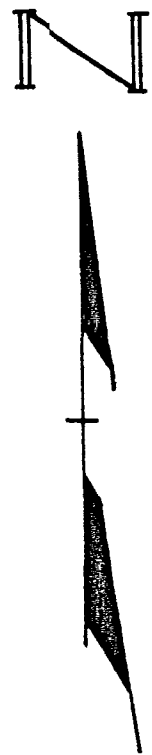
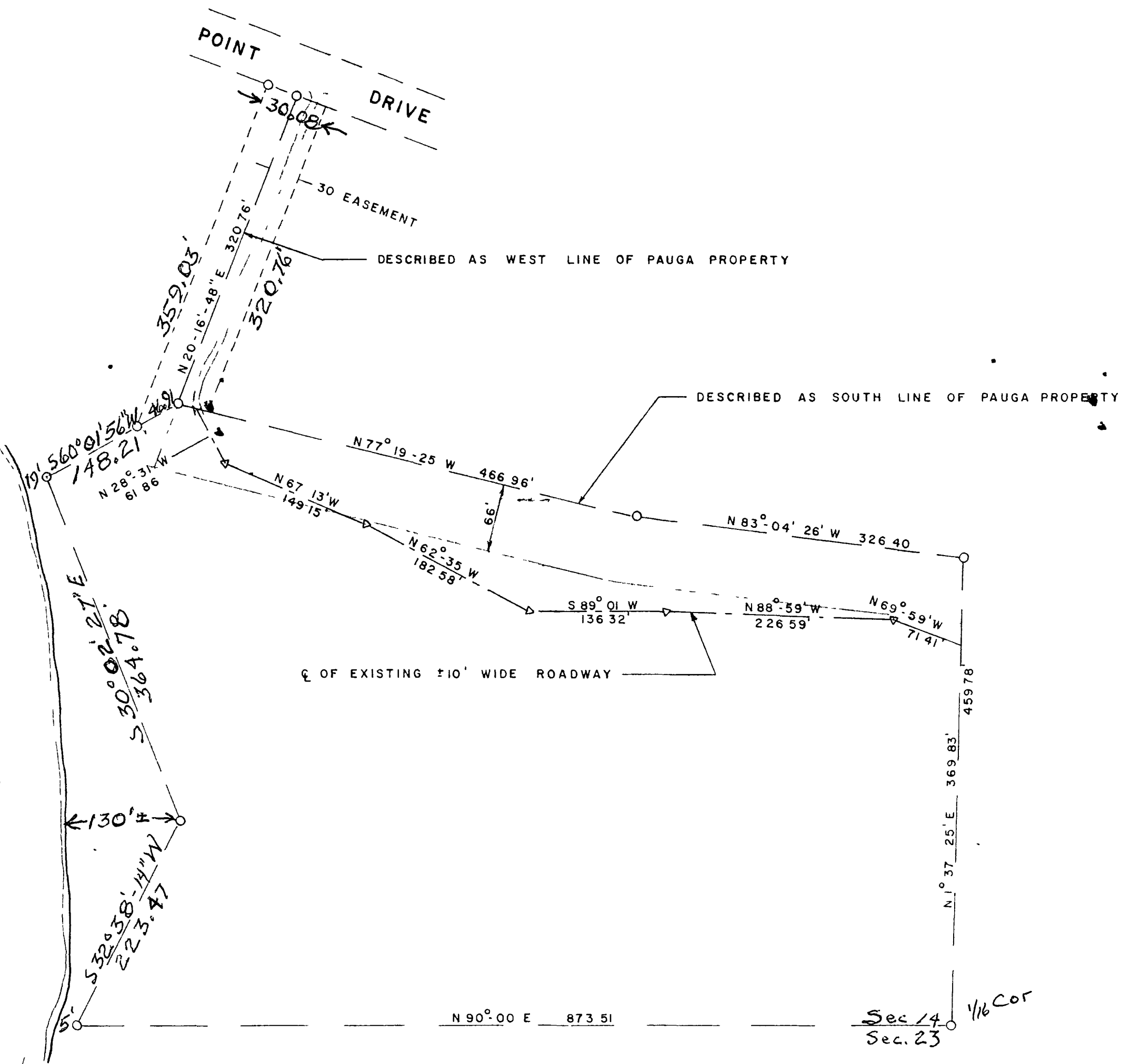


MAP # B5423
DATE FILED 12/30/03
BY *AK*
DESCRIPTION
ONEIDA CO. S. D. S. OFFICE

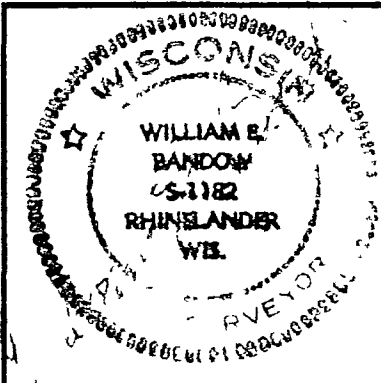


FETKE LAKE



○ IRON PIPE BY OTHERS
▽ SET SPIKE

LOCATED IN THE SW 1/4 - SW 1/4
SECTION 14, T37N, R8E



ROAD LOCATION FOR
NORTHERN TITLE & ABSTRACT
RHINELANDER, WIS

SCALE 1" = 100' DATE 11-28-79 DWN BY WEB
DWG NO 7062 GENISOT AND ASSOCIATES, INC.
RHINELANDER, WIS

514 T37 R8 - SW 1/4 - SW 1/4