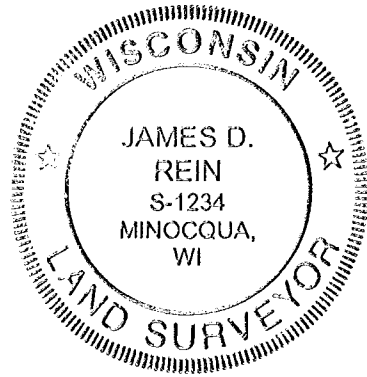


35503

The  
**NE 1/4 of the NE 1/4  
SECTION 30, T39N, R6E**

Minocqua Township  
Oneida County, Wisconsin  
SURVEYOR'S CERTIFICATE

I, James D. Rein, Registered Land Surveyor No. S-1234, hereby certify that I have surveyed the property shown hereon; that this map represents an accurate survey of said property to the best of my knowledge and belief; that I have performed this survey by order of Jaun Sebestyen; and that I have complied with the requirements of Wisconsin Administrative Code A-E 7.

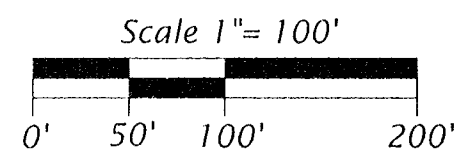


**WILDERNESS  
SURVEYING,  
INC.**

Registered Land Surveyor # S-1234  
Dated this 12th day of December, 2003.

MAP # **B 5503**  
DATE FILED **JAN 02 2004**  
BY **(JNO)**  
DESCRIPTION FILED  
ONEIDA CO. SURVEYOR'S OFFICE

Bearings Oneida County Grid,  
based on GPS survey data.



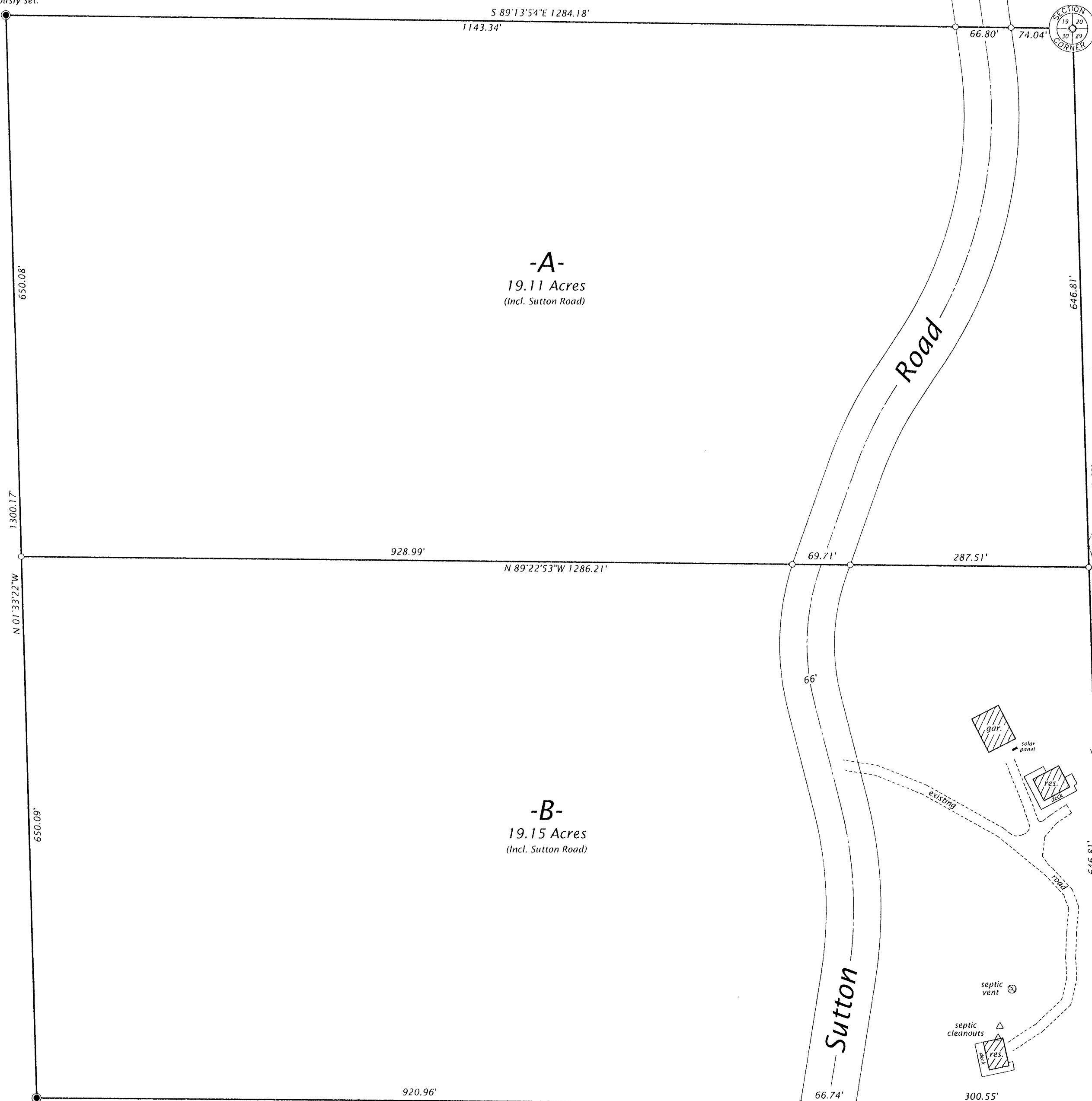
Legend  
○ = Iron pipe set, 1.0" dia. x 24" long.  
Pipe sizes are outside diameter dimension.  
Other corner monuments are as noted.

Notes:  
Legal descriptions conforming to this survey  
have been provided on separate sheets.

See Map No. 01-151, dated January 21st,  
and Map No. 01-180, dated January 22nd,  
by Wilderness Surveying, Inc., for previous  
survey data.

Portion of roads and lakes shown hereon are  
based upon Oneida County Land Information digital  
data obtained from photographic imagery.

E 1/16 Corner  
Set aluminum capped  
1.0" dia. x 48" long iron pipe  
previously set.



Capped 2.4" dia. aluminum  
monument found in place.

N 1/16 Corner  
2.4" dia. iron pipe  
bears S38°41'18"W 0.52'  
from record position.

NE 1/16 Corner  
Set aluminum capped  
1.0" dia. x 48" long iron pipe.

**WILDERNESS SURVEYING, INC.**

Post Office Box 1111 - 8793 Earls Court  
Minocqua, Wisconsin 54548-1111

Telephone (715) 356-5100 - www.wildernesssurveying.com

Map Number: 03-231

File Number: 1-30-396

Drafted by: M. Oestreich

Revisions:

35503

35503