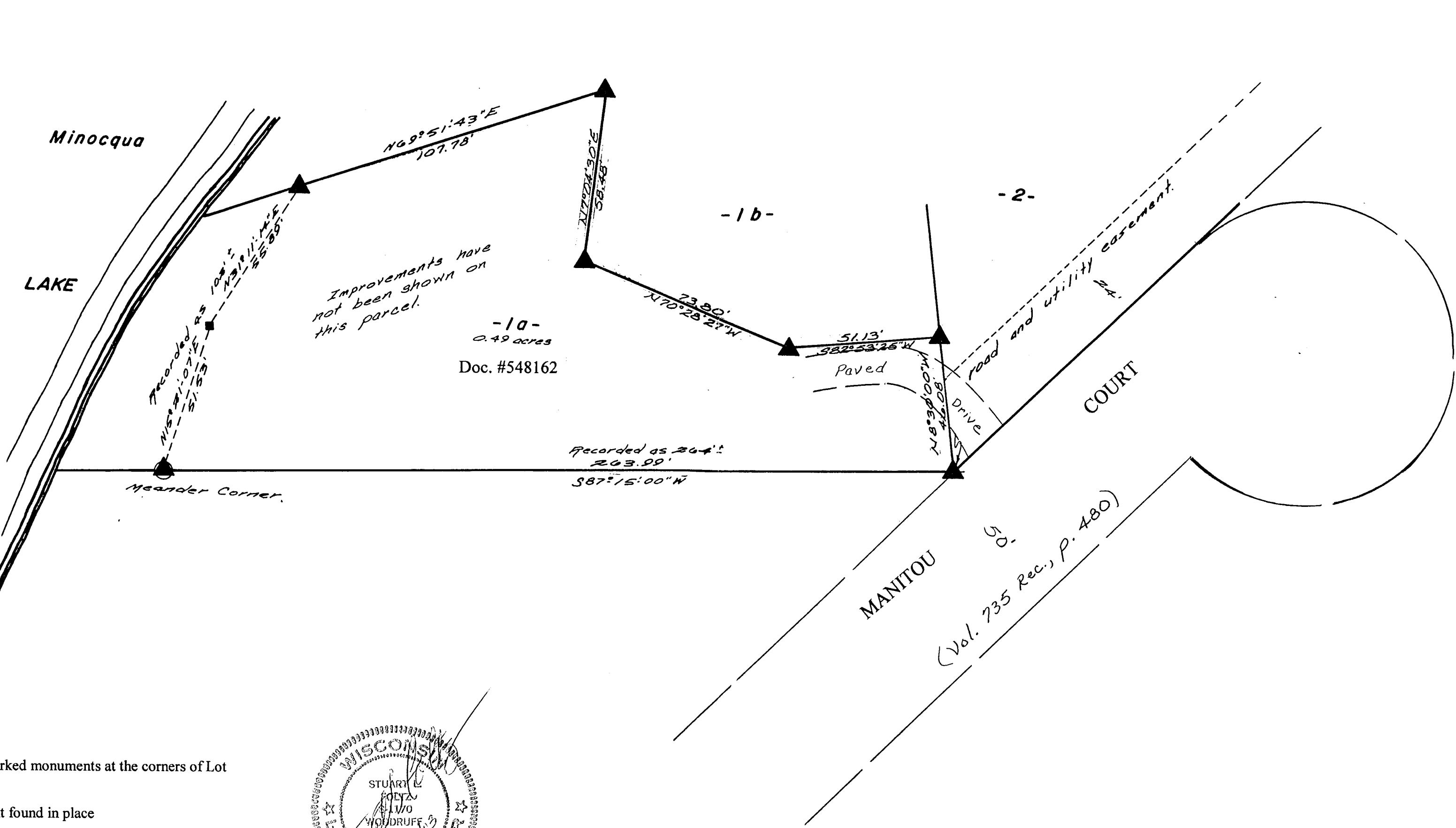


Part of
Gov't Lot 8
Section 14, T39N, R6E
Town of Minocqua
Oneida County, Wisconsin

MAP # B5519
DATE FILED JAN 02 2004
BY *PHO*
DESCRIPTION FILED
ONEIDA CO. SURVEYOR'S OFFICE

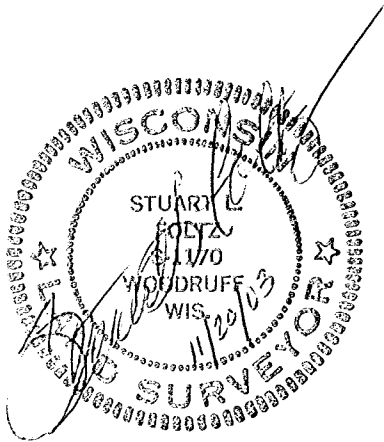


November 20, 2003

Recovered, verified, and marked monuments at the corners of Lot 1a, as follows:

▲ = Iron monument found in place

This survey was completed by Foltz and Associates, Inc. for the purpose of locating existing lot corners by the order of David Lang, who has executed a written waiver for all other requirements of Wis. Adm. Code Chap. A-E 7. A closed traverse was not made and the minimum accuracy is 1 part in 100 and plus or minus 2°.



Foltz and Associates, Inc.

Surveyors Engineers

8612 Highway 51 North, Minocqua, Wisconsin 54548

(715) 356-9485 fax (715) 356-1841