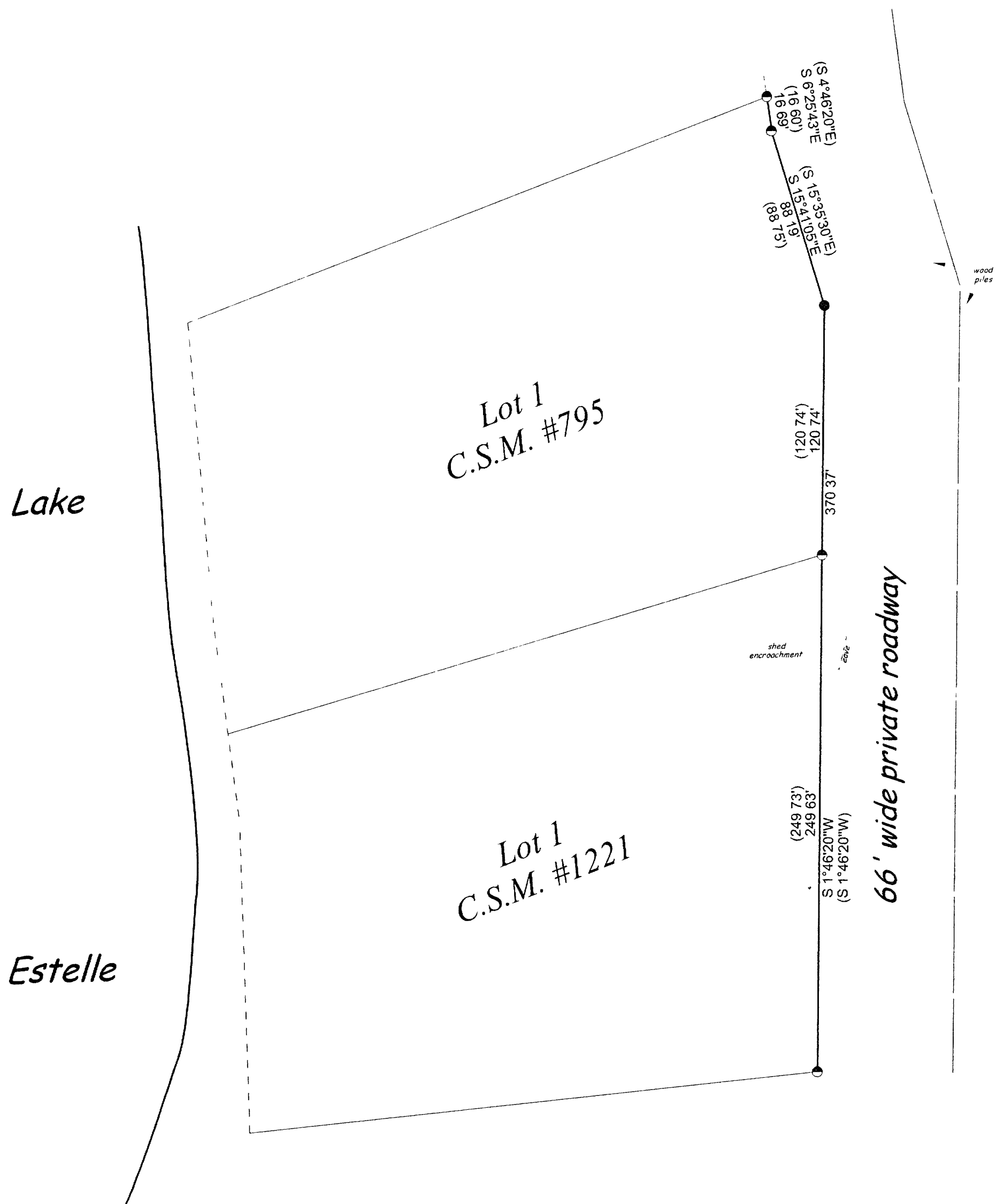


B5783

B5783

Being part of  
**Gov't Lot 4, Section 20, T37N, R8E,**  
**Town of Newbold, Oneida County, Wisconsin**



Bearings referenced to the  
east line of C S M #1221,  
assumed to bear S 1°46'20" W

- LEGEND
- Railroad spike set
  - 1-1/4" Iron pipe found
  - ( " ) Recorded as
- Note: Pipe dimensions are O D

MAP #	B5783
DATE FILED	JAN 20 2005
BY	ph
DESCRIPTION FILED	
ONEIDA CO. SURVEYOR'S OFFICE	

I, William E. Bandow, hereby certify that I have surveyed the above lines under the direction of Steve Zastrow, that the above map is a true and correct representation of the lands surveyed to the best of my knowledge and belief, and that I have complied with the provisions of AE-7 of the Wisconsin Administrative Code

*William E. Bandow* 12-15-04  
William E. Bandow RLS-1182 date

	survey for	
	Steve Zastrow	
	scale 1" = 60'	date 12/13/04 dwn by k.a.z.
DWG. NO	GENISOT AND ASSOCIATES, INC	
10788	RHINELANDER, WISCONSIN	

B5783

B5783