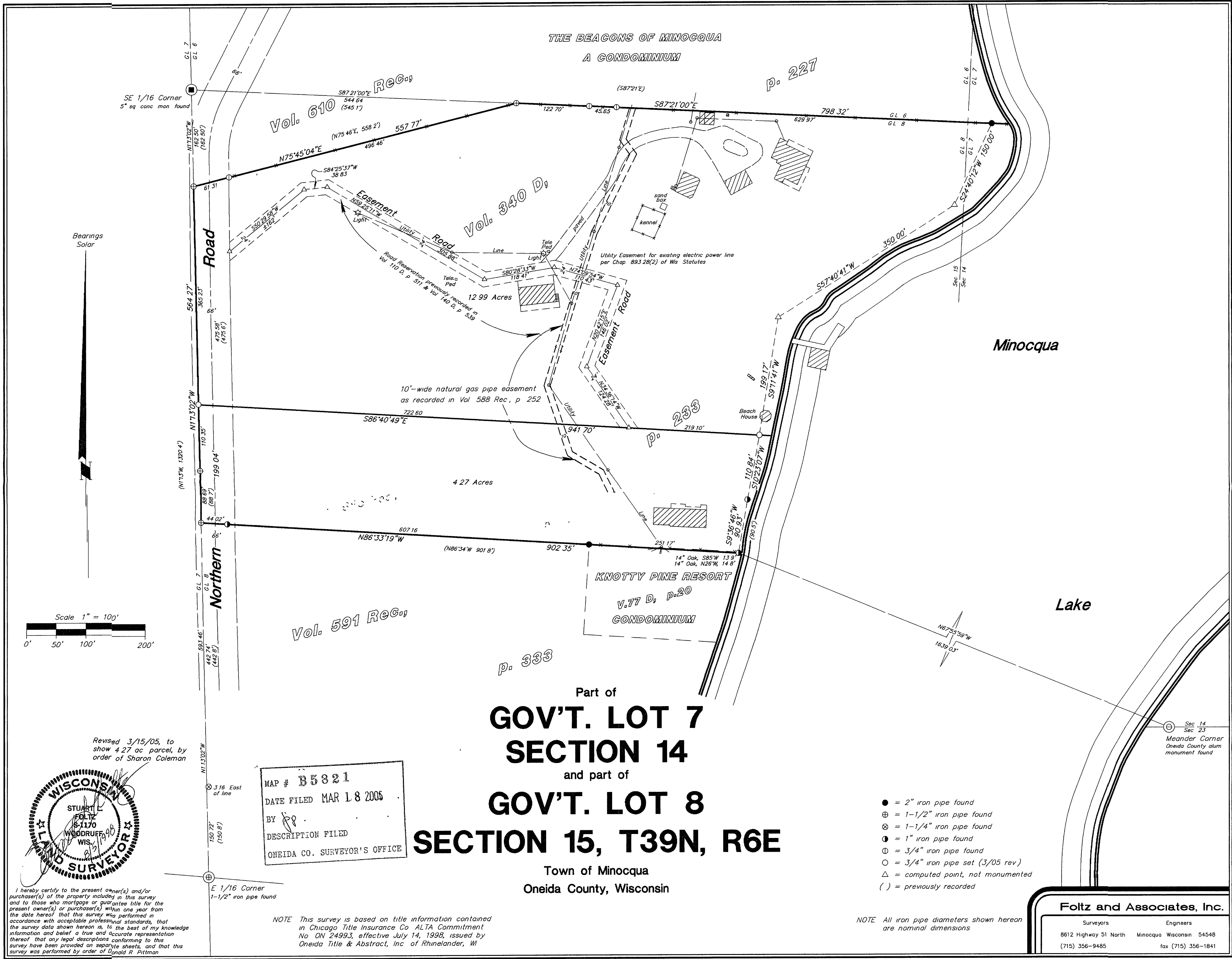


B5821

B5821

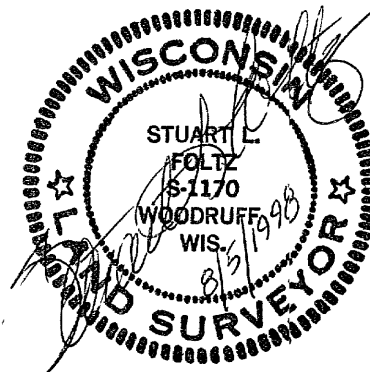
B5821

B5821



Bearings  
Solar

Scale 1" = 100'



Revised 3/15/05, to show 4.27 ac parcel, by order of Sharon Coleman

MAP # B5821  
DATE FILED MAR 18 2005  
BY [Signature]  
DESCRIPTION FILED  
ONEIDA CO. SURVEYOR'S OFFICE

NOTE This survey is based on title information contained in Chicago Title Insurance Co ALTA Commitment No ON 24993, effective July 14, 1998, issued by Oneida Title & Abstract, Inc of Rhinelander, WI

- = 2" iron pipe found
- ⊕ = 1-1/2" iron pipe found
- ⊗ = 1-1/4" iron pipe found
- ⦿ = 1" iron pipe found
- ⦶ = 3/4" iron pipe found
- = 3/4" iron pipe set (3/05 rev)
- △ = computed point, not monumented
- ( ) = previously recorded

NOTE All iron pipe diameters shown hereon are nominal dimensions

Foltz and Associates, Inc.

Surveyors Engineers  
8612 Highway 51 North Minocqua Wisconsin 54548  
(715) 356-9485 fax (715) 356-1841

C Winkler

13-14-396  
16-15-396