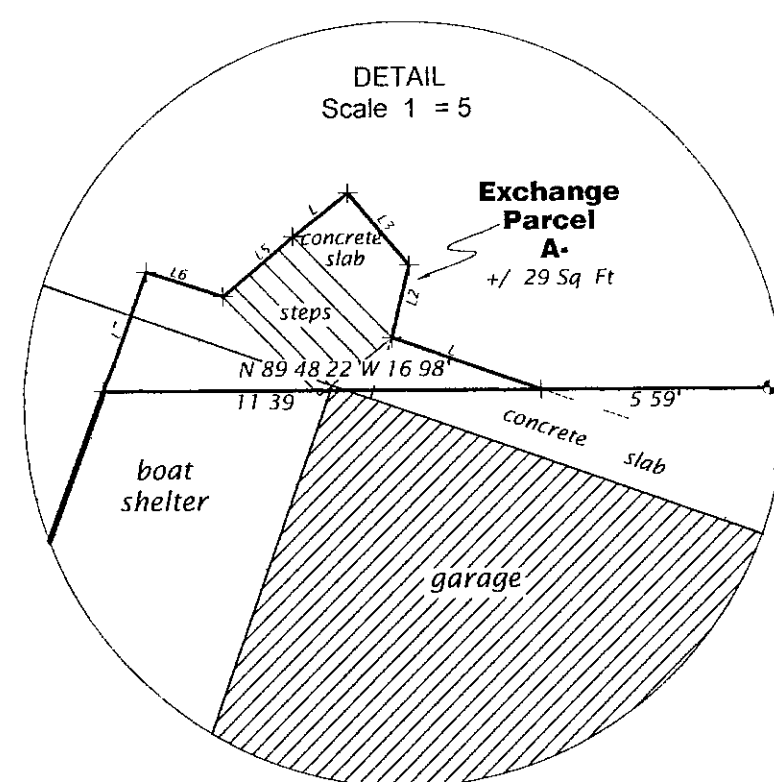


५५०५३



Registered Land Surveyor # S 1234  
Dated this 19th day of May 2005

*The side lines lengthen or shorten to begin on the northerly line of said Lot 1 in the plat of McKenna's Subdivision and terminate on the southerly line of said Lot 1 in the plat of McKenna's Subdivision*

**WILDERNESS SURVEYING, INC**  
 Post Office Box 1111 8793 Earls Court  
 Minocqua Wisconsin 54548 1111  
 Telephone (715) 356 5100 [www.wildernesssurveying.com](http://www.wildernesssurveying.com)

<i>Map Number 05 44</i> <i>File Number 2 20 395</i> <i>Drafted by R Neis</i>	<i>Revisions</i>
--	------------------

352