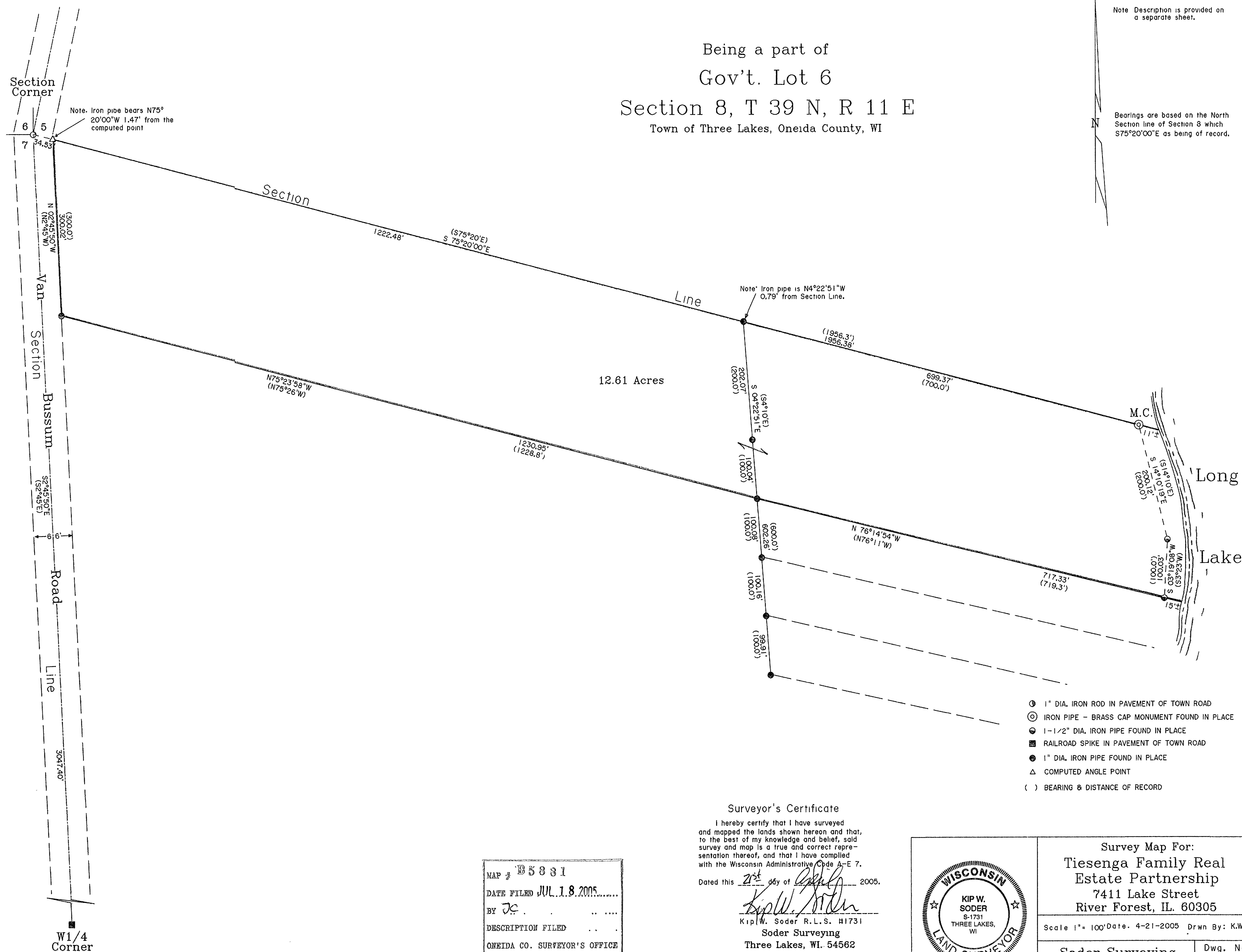


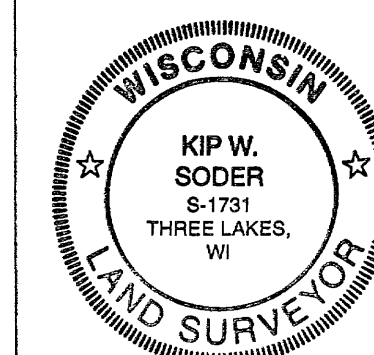

Bearings are based on the North Section line of Section 8 which S75°20'00"E as being of record.



I hereby certify that I have surveyed  
and mapped the lands shown hereon and that,  
to the best of my knowledge and belief, said  
survey and map is a true and correct repre-  
sentation thereof, and that I have complied  
with the Wisconsin Administrative Code A-E 7.

Dated this 21<sup>st</sup> day of April 2005.

MAP # B5881  
DATE FILED JUL 18 2005  
BY JC  
DESCRIPTION FILED  
ONEIDA CO. SURVEYOR'S OFFICE



Survey Map For:  
Tiesenga Family Real  
Estate Partnership  
7411 Lake Street  
River Forest, IL. 60305

Scale 1"= 100' Date. 4-21-2005 Drwn By: K.W.S

Soder Surveying Three Lakes, WI.	Dwg. No. 886
-------------------------------------	-----------------