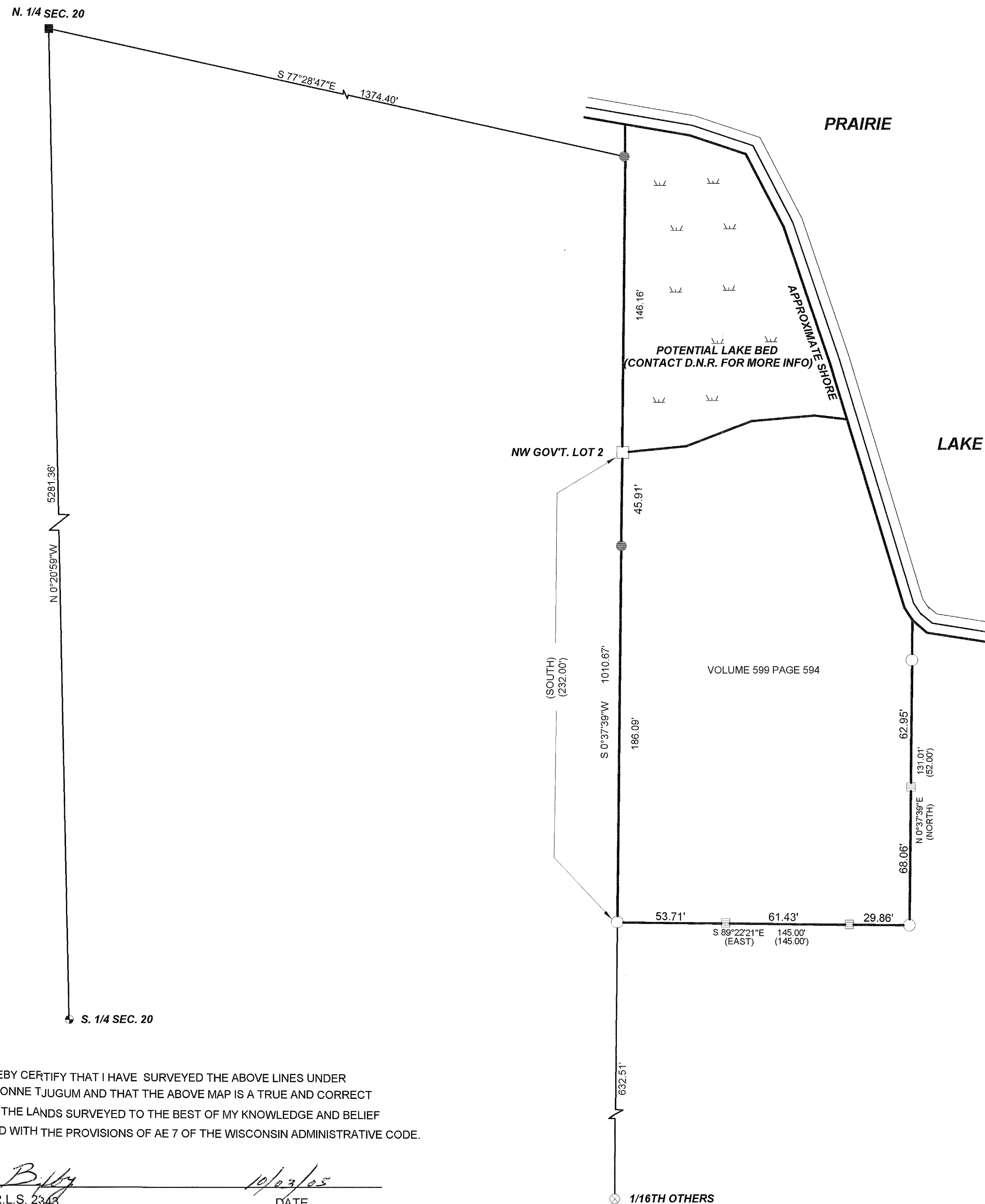


**SURVEY OF THE SOUTH & EAST LINES OF VOLUME 599 PAGE 594, LOCATED IN GOV'T. LOT 2,  
SECTION 20, T36N, R06E, TOWN OF NOKOMIS, ONEIDA COUNTY, WISCONSIN**

MAP #	B5970
DATE FILED	OCT 05 2005
BY	JC
DESCRIPTION FILED	
ONEIDA CO. SURVEYOR'S OFFICE	

BEARINGS REFERENCED TO THE EAST LINE, SECTION 07, T36N, R06E,  
ASSUMED TO BEAR N00°30'49"W.



I, KEVIN P. BIXBY, HEREBY CERTIFY THAT I HAVE SURVEYED THE ABOVE LINES UNDER  
THE DIRECTION OF YVONNE TJUGUM AND THAT THE ABOVE MAP IS A TRUE AND CORRECT  
REPRESENTATION OF THE LANDS SURVEYED TO THE BEST OF MY KNOWLEDGE AND BELIEF  
THAT I HAVE COMPLIED WITH THE PROVISIONS OF AE 7 OF THE WISCONSIN ADMINISTRATIVE CODE.

KEVIN P. BIXBY R.L.S. 2348

DATE

NOTE: THERE APPEARS TO BE TWO POTENTIAL INTERPRETATIONS FOR THE NW CORNER  
OF GOV'T. LOT 2. ONE, WHERE THE WEST LINE OF SAID GOV'T. LOT INTERSECTS THE WATER  
LINE OF PRAIRIE LAKE AND TWO, WHERE SAID WEST LINE INTERSECTS THE SOUTH EDGE OF  
THE SHOWN POTENTIAL LAKE BED. BASED ON PREVIOUS ORDINARY HIGH WATER MARK ADVISE-  
MENTS FROM LOCAL GOV'T. OFFICIALS, IT IS BIXBY LAND SURVEYING INC'S OPINION THAT THE ABOVE  
SHOWN LOCATION FOR THE NW CORNER OF SAID GOV'T. LOT 2 IS THE BEST AVAILABLE EVIDENCE  
FOR DETERMINING THE SOUTH AND EAST LINES FOR THE ABOVE SHOWN PARCEL.

	DWG. NO. <b>0310</b>	<b>BIXBY LAND SURVEYING, INC.</b> P.O. BOX 1532, RHINELANDER, WI. 54501 WEB PAGE: <a href="http://www.bixbylandsurveying.com">www.bixbylandsurveying.com</a> PHONE NUMBER: 715-362-LAND
	SURVEY FOR <b>YVONNE TJUGUM</b>	
SCALE: 1"=40' DATE: 09/20/05 DWN. BY: K.B.		