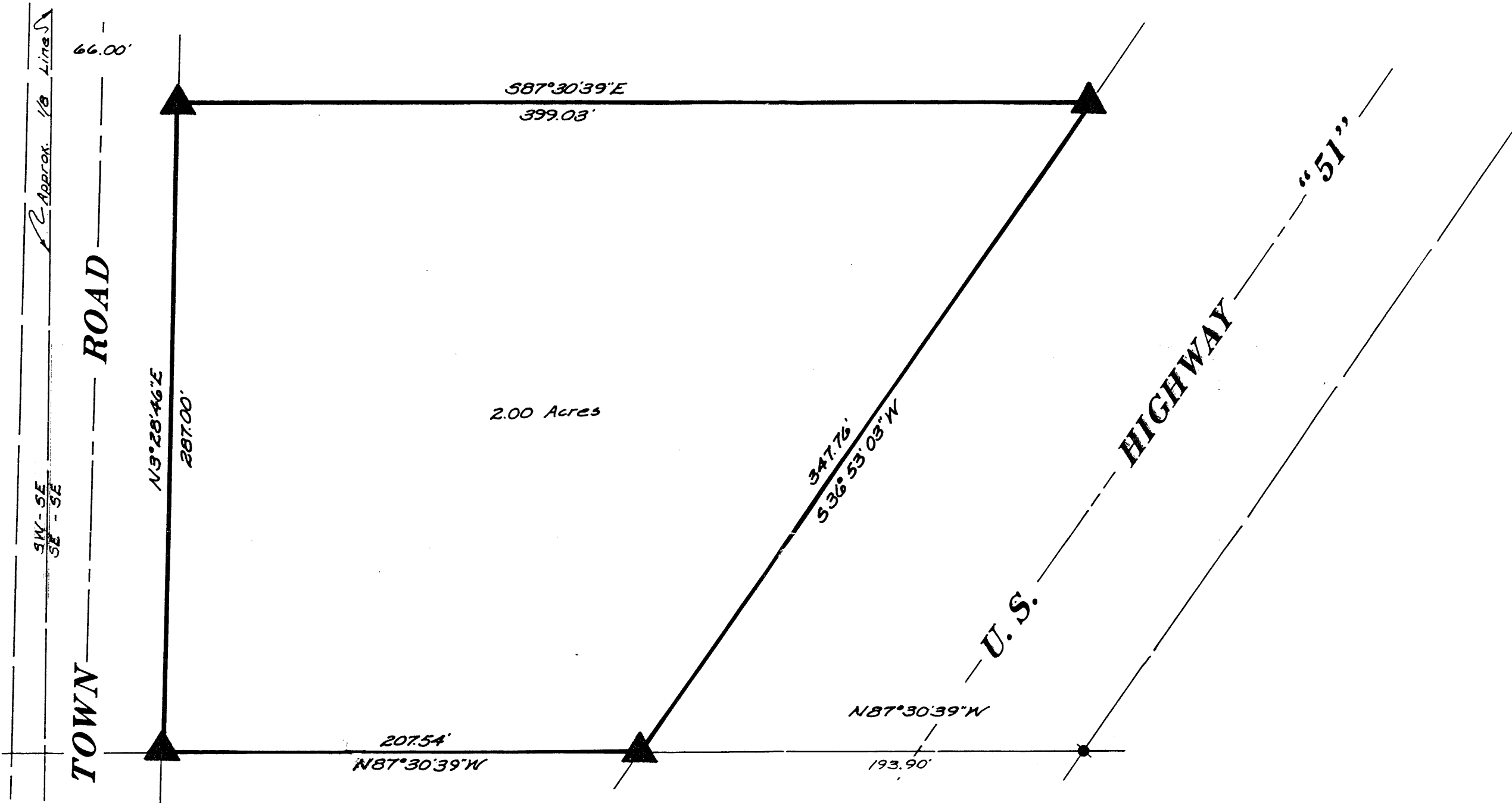


MAP # 86416
DATE FILED AUG-01-2006
BY *[Signature]*
DESCRIPTION FILED
ONEIDA CO. SURVEYOR'S OFFICE

Part of
SE¹/₄ of the SE¹/₄
Section 15, T36N, R6E
Town of Nokomis
Oneida County, Wisconsin

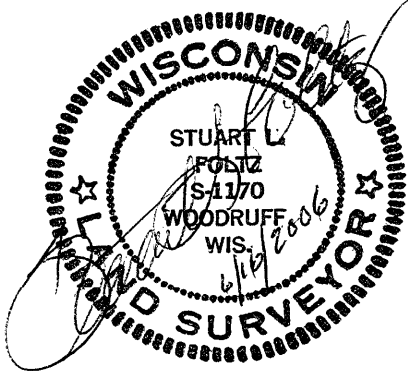


June 16, 2006

Recovered, verified, and marked monuments at the corners of the Northland Bible Church property, as follows:

▲ = Iron monument found in place

This survey was completed by Foltz and Associates, Inc. for the purpose of locating existing lot corners by the order of Pastor Alex M. Lindsay, who has executed a written waiver for all other requirements of Wis. Adm. Code Chap. A-E 7. A closed traverse was not made and the minimum accuracy is 1 part in 100 and plus or minus 2°.



Bearings and distances shown are from a survey by Inman-Foltz and Associates, Inc. dated July 30, 1979

Scale: 1" = 50'

Foltz and Associates, Inc.

Surveyors	Engineers
8612 Highway 51 North, Minocqua, Wisconsin 54548	
(715) 356-9485	fax (715) 356-1841