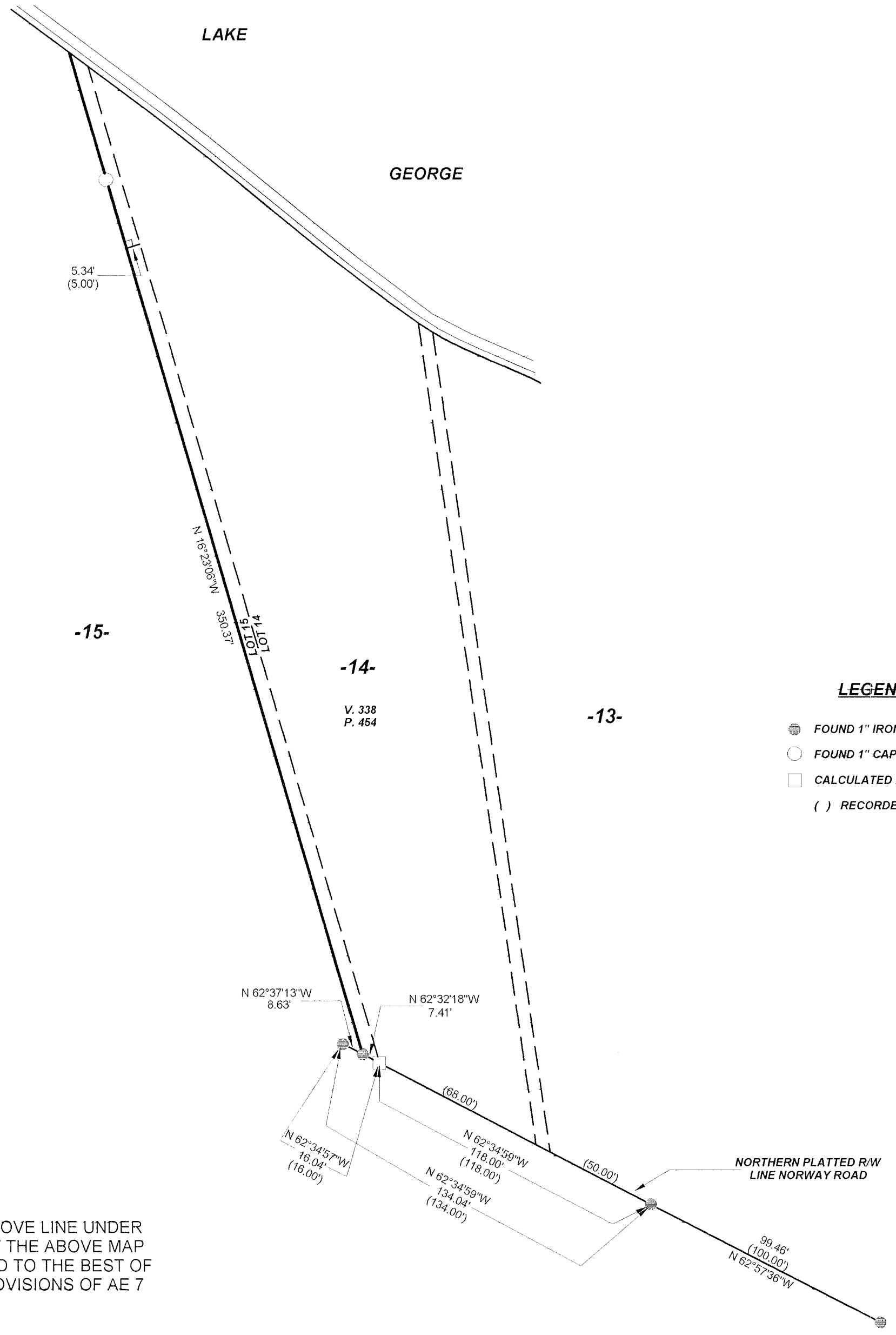


WEST LINE SURVEY OF VOLUME 338, PAGE 454, LOCATED IN LOT 15, PINE CREST PLAT,
SECTION 14, T36N, R09E, TOWN OF PELICAN, ONEIDA COUNTY, WISCONSIN

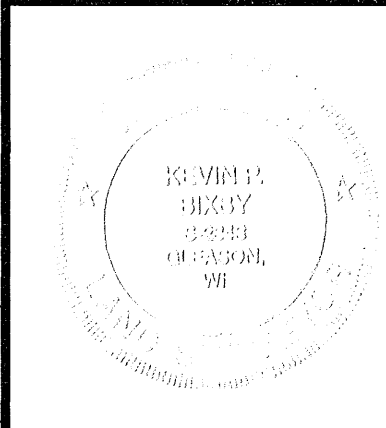
MAP # 00478
DATE FILED OCT 23 2000
BY
DISCUSSION FILED
ONEIDA CO. SHERIFF'S OFFICE

BEARINGS REFERENCED TO THE SOUTHERLY LINE
OF LOTS 13, 14, 15, PINE CREST PLAT,
ASSUMED TO BEAR N62°34'59"W.



I, KEVIN P. BIXBY, HEREBY CERTIFY THAT I HAVE SURVEYED THE ABOVE LINE UNDER
THE DIRECTION OF JIM DIERMEIER AND TOM CORNELIUS, AND THAT THE ABOVE MAP
IS A TRUE AND CORRECT REPRESENTATION OF THE LINE SURVEYED TO THE BEST OF
MY KNOWLEDGE AND BELIEF THAT I HAVE COMPLIED WITH THE PROVISIONS OF AE 7
OF THE WISCONSIN ADMINISTRATIVE CODE.

Kevin P. Bixby 10/14/00
KEVIN P. BIXBY R.L.S. 2343 DATE



DWG. NO. 0359	BIXBY LAND SURVEYING, INC. P.O. BOX 1532, RHINELANDER, WI. 54501 WEB PAGE: www.bixbylandsurveying.com PHONE NUMBER: 715-362-LAND
SURVEY FOR JIM DIERMEIER AND TOM CORNELIUS RHINELANDER, WISCONSIN	
SCALE: 1" = 40' DATE: 9/12/16 DWN. BY: C.B.	