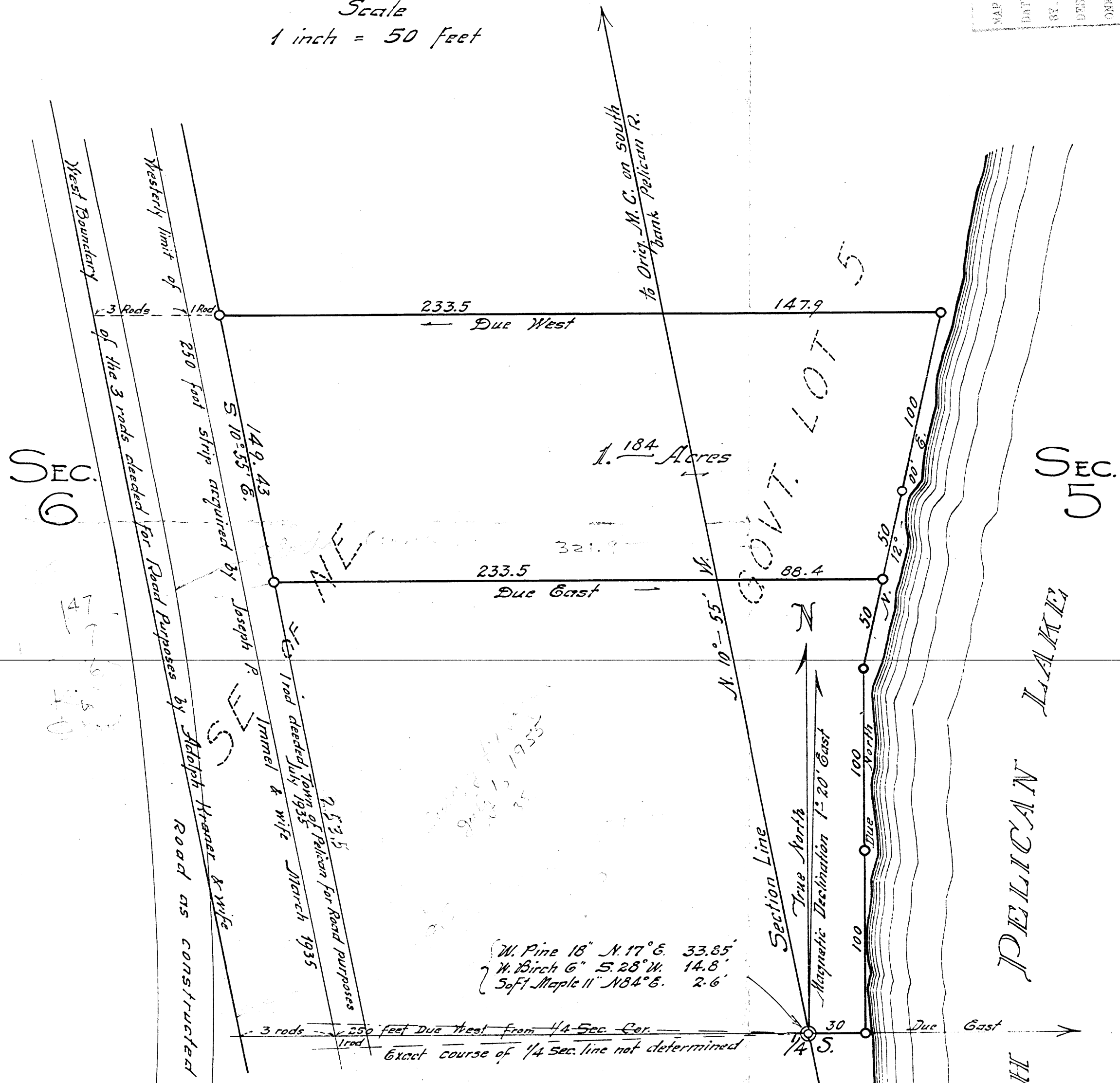


Scale
1 inch = 50 feet

APR 4 2008
MAR 04 2008
DATE FILMED
BY *[Signature]*
DESCRIPTION FILED
ORFEDA CO., BIRMINGHAM'S OFFICE



I hereby certify that I, Keith M. Hall, have at the request of Joseph P. Immel, surveyed the above land. That all courses shown are True Courses (derived from an observation on Polaris) and that the lines staked on the premises and hereon drawn are a true representation of this survey. I wish further to state that since the North One Eighth ($\frac{1}{8}$) corner, the One Fourth ($\frac{1}{4}$) Section corner, and the two Meander corners south on North Pelican Lake set by D. H. Vaughan in 1912 were found by Harry C. Hall in his investigation and survey of 1931 to be badly out of alignment, I have therefore used Hall's corrected survey. Vaughan's field notes show his intention to make a straight line from the Section corner common to sections 5-6-7-8 north to the original Meander corner on the South bank of the Pelican River as the original One Fourth ($\frac{1}{4}$) was not found. Harry C. Hall used the same control points at the north and south ends of this line so it is evident Vaughan erred in correcting the middle part of his line in the field the alignment thereof never being checked by instrument. Vaughan's Plat of his survey recorded in Vol. 4 page 22 of Plats in the Oneida County Register of Deeds Office also shows his intention to have this a straight line. The Immel deed of 250 feet, from Adolph Kraner and Lucille Kraner in March 1935 Vol. 111 page 156 of deeds, is to be according to this Plat, so I have used the straight alignment. The aforementioned corners of Vaughan's in the field, being erroneous, have not been perpetuated so there is little likelihood of them hereafter causing disturbance. The corners set by Harry C. Hall are of Iron with wood post and well marked bearing trees. The double circles drawn on this Plat represent two of such Irons and corners, the remaining single circles represent important points and Irons in my survey of recent parcel and anticipated future needs for conveying the remaining land.

Survey completed Sept. 2, 1940

Keith M. Hall
Surveyor.

6 ⁵/₂ B.T.s True Contact See N. 82°-52' E
7 3 Make 8" N. 44°-E. 26.8
9 3 Make 9" N. 6° W. 61.3