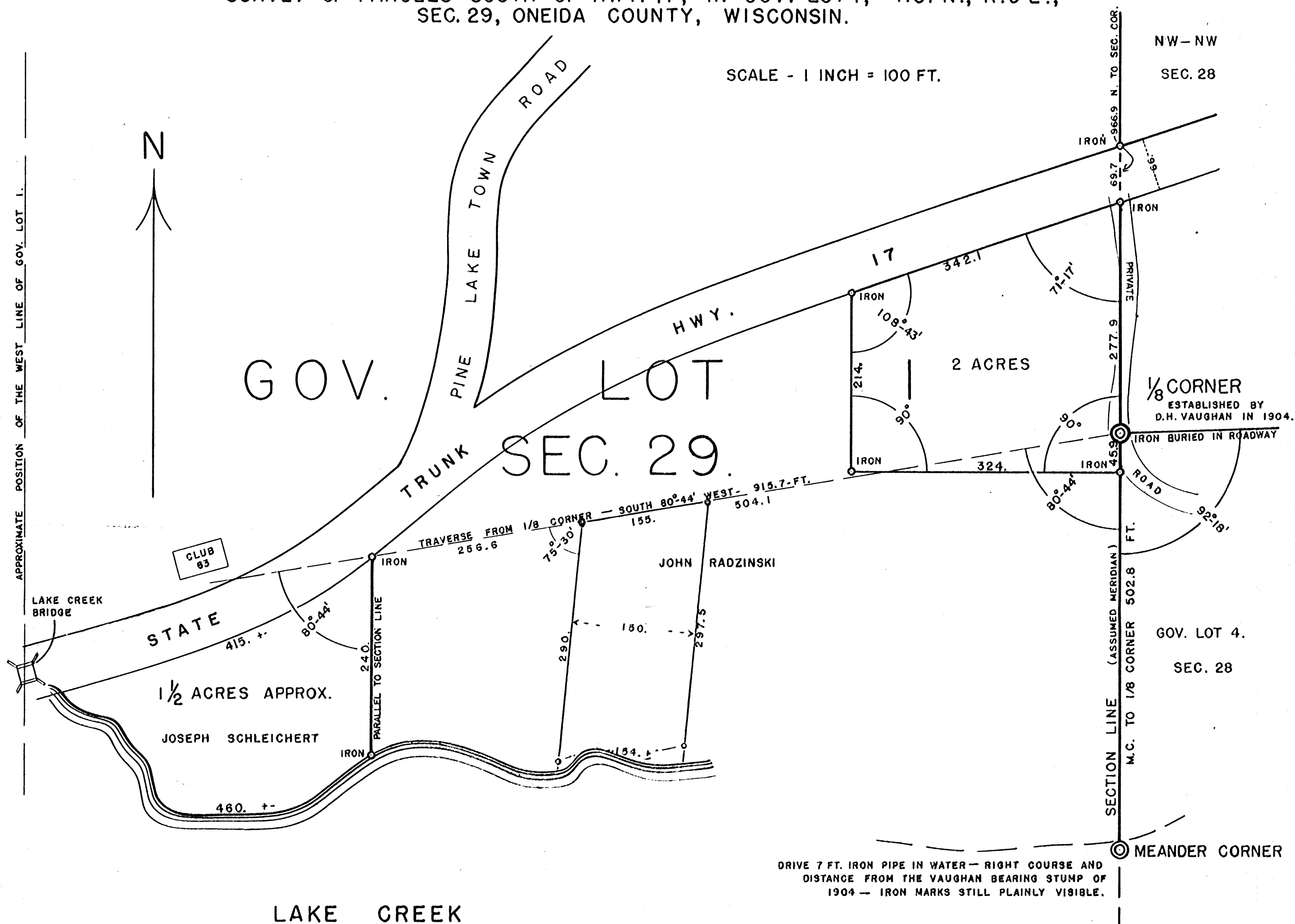


SCALE - 1 INCH = 100 FT.



I, KEITH M. HALL, HEREBY CERTIFY THAT I HAVE PERPETUATED WITH IRON MARKERS THE D.H. VAUGHAN 1/8 CORNER AND MEANDER CORNER HEREON SHOWN, AND HAVE, AT THE REQUEST OF JOSEPH SCHLEICHERT OF CHICAGO, ILL. AND JOHN RADZINSKI OF RHINELANDER (TOWN OF PINE LAKE), WISCONSIN, SURVEYED TWO PARCELS AND MONUMENTED SAME WITH IRON PIPE AT THE POINTS INDICATED; THE FIRST - AN ACRE AND ONE HALF - BEING SURVEYED AND DESCRIBED IN AUG. 1941, THE SECOND - THE TWO ACRE TRACT - IN DEC. 1941; THAT THE MAP HEREON DRAWN WAS PREPARED BY ME AND IS TO THE BEST OF MY KNOWLEDGE A CORRECT REPRESENTATION OF THIS SURVEY.

SIGNED, DEC. 20, 1941

Keith M. Hall  
KEITH M. HALL  
SURVEYOR.

MAP # B 6925  
DATE FILED MAR 31 2008  
BY *PLD*  
DESCRIPTION  
ONEIDA CO. SURVEYOR'S OFFICE