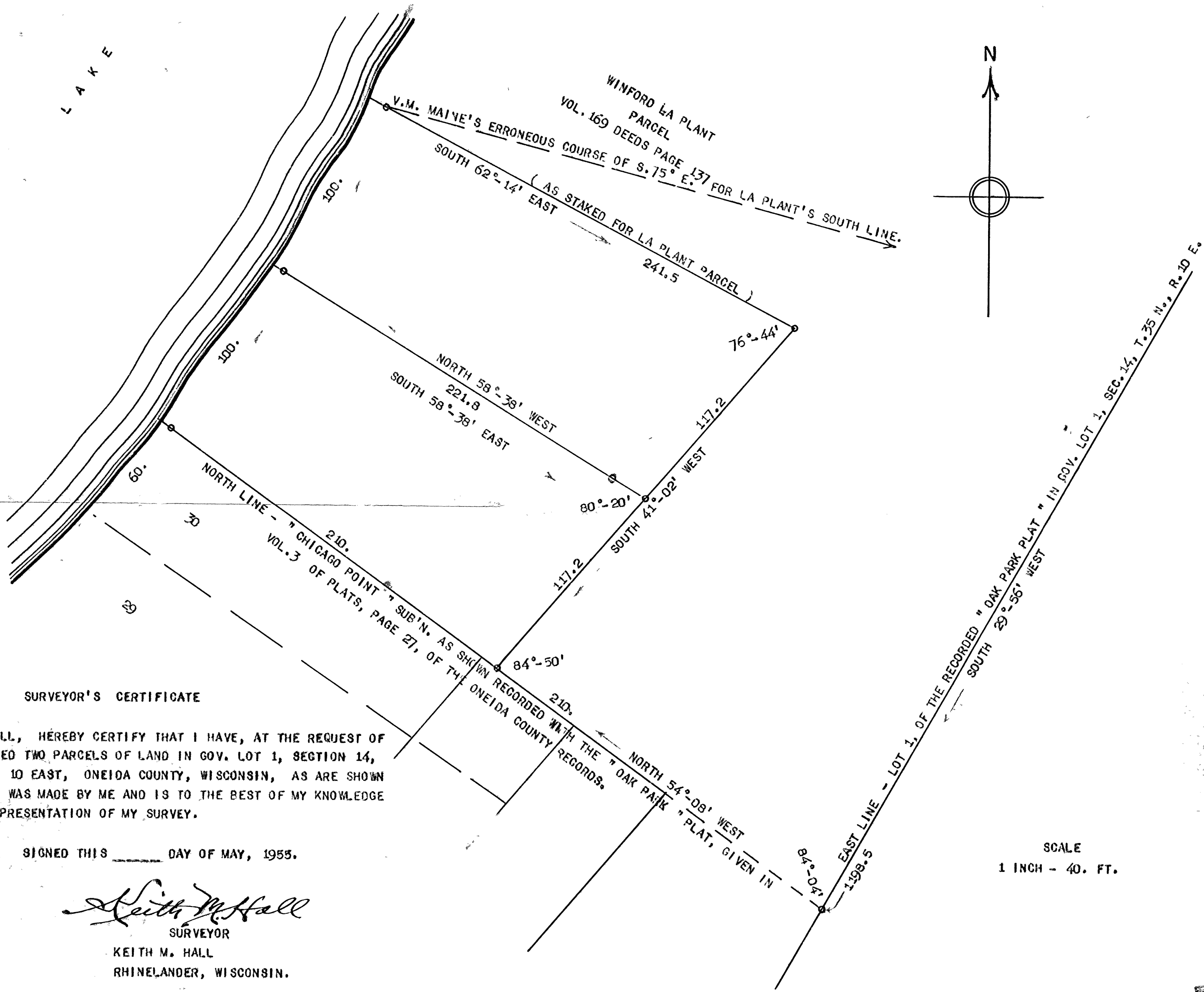


MAP # **88961**
DATE FILED . . . APR. 22 2008
BY *JAB*
DESCRIPTION FILED . . .
ONEIDA CO SURVEYOR'S OFFICE

PELICAN
LAKE



SURVEYOR'S CERTIFICATE

I, KEITH M. HALL, HEREBY CERTIFY THAT I HAVE, AT THE REQUEST OF HAROLD F. WEAVER, SURVEYED TWO PARCELS OF LAND IN GOV. LOT 1, SECTION 14, TOWNSHIP 35 NORTH, RANGE 10 EAST, ONEIDA COUNTY, WISCONSIN, AS ARE SHOWN ON THE ABOVE MAP, WHICH WAS MADE BY ME AND IS TO THE BEST OF MY KNOWLEDGE AND BELIEF A CORRECT REPRESENTATION OF MY SURVEY.

SIGNED THIS _____ DAY OF MAY, 1953.

Keith M. Hall
SURVEYOR
KEITH M. HALL
RHINELANDER, WISCONSIN.

SCALE
1 INCH = 40. FT.

88961

88961