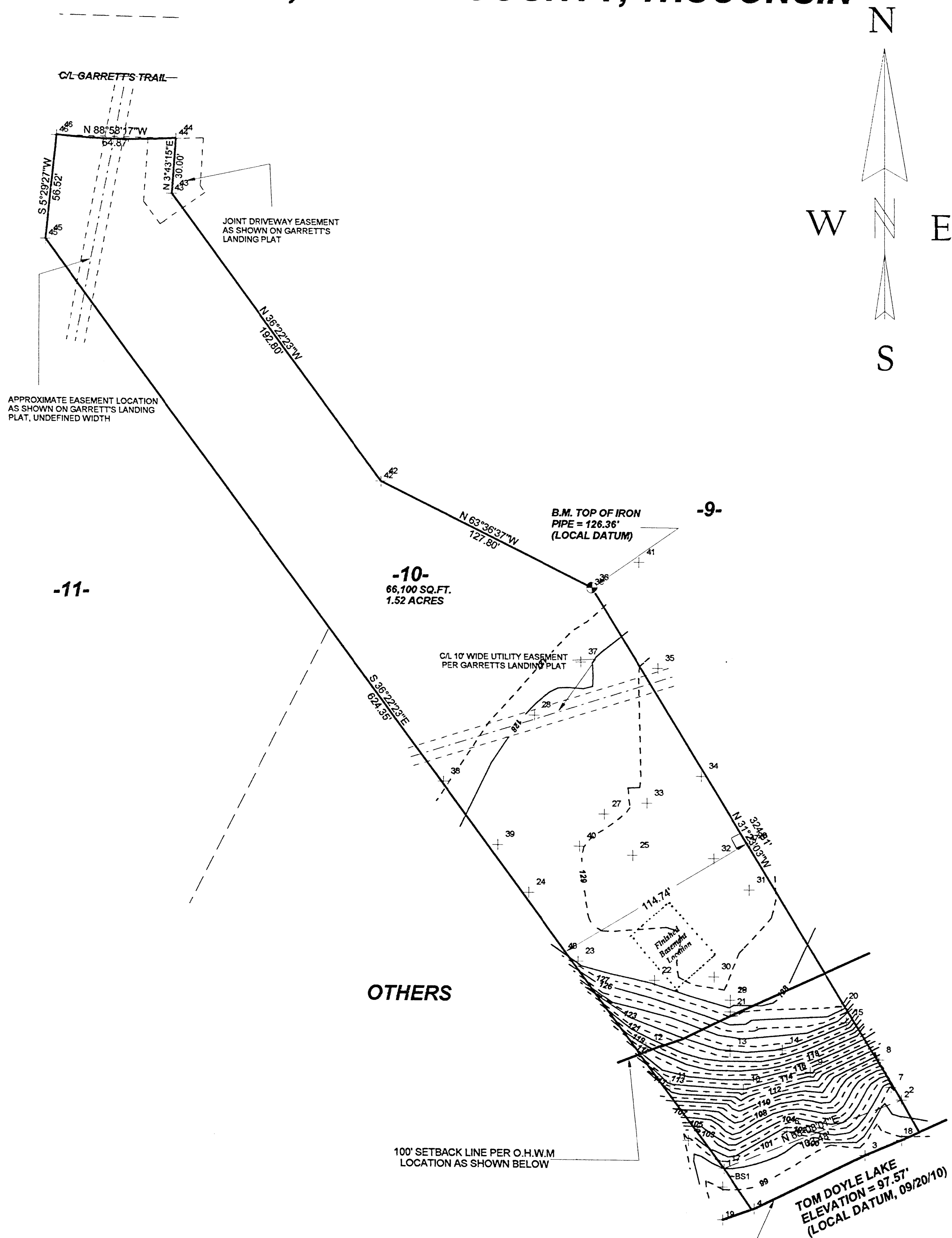


B 7455

B 7455

**LOCATED IN LOT # 10, GARRETTS LANDING SUBDIVISION,
LOCATED IN SECTION 21, T38N, R08E, TOWN OF
NEWBOLD, ONEIDA COUNTY, WISCONSIN**



SCALE: 1" = 40'
0 20' 40' 80'

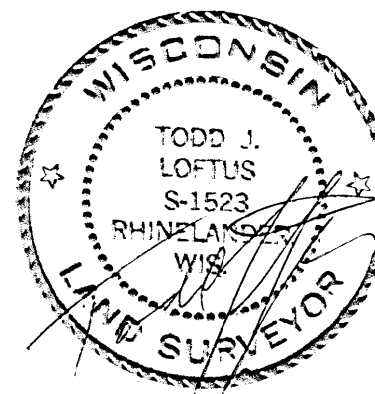
CONTOUR INTERVAL = 1.00'

O.H.W.M. PER LOFTUS SURVEYING OPINION
(OFFICIAL DETERMINATION MAY OR MAYNOT BE NEEDED)

Revised July 16th, 2011 to show
Basement location as built.

B 7455

MAP #	B 7455
DATE FILED	8/15/11
BY	KA
DESCRIPTION FILED	
ONEIDA CO. SURVEYOR'S OFFICE	



DWG. NO.	1708B6
LOFTUS LAND SURVEYING 880 BALSAM STREET RHINELANDER, WI. 54501 715-369-1142 E-MAIL: hodag28@hotmail.com	

TOPOGRAPHICAL SURVEY FOR

TED MILLER
FRANKLIN, WI.

SCALE: 1" = 40' DATE: 11/15/10 DWN. BY: K.B.