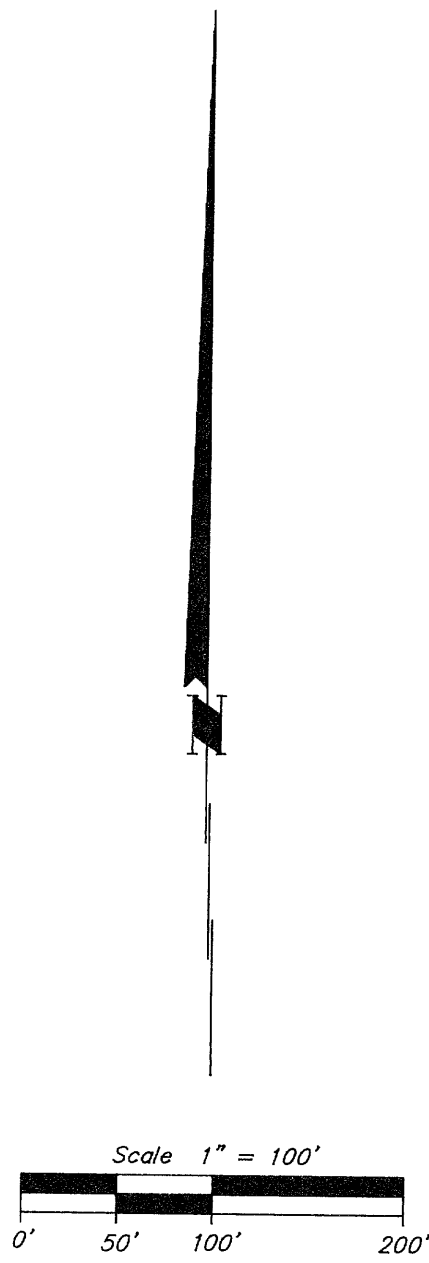
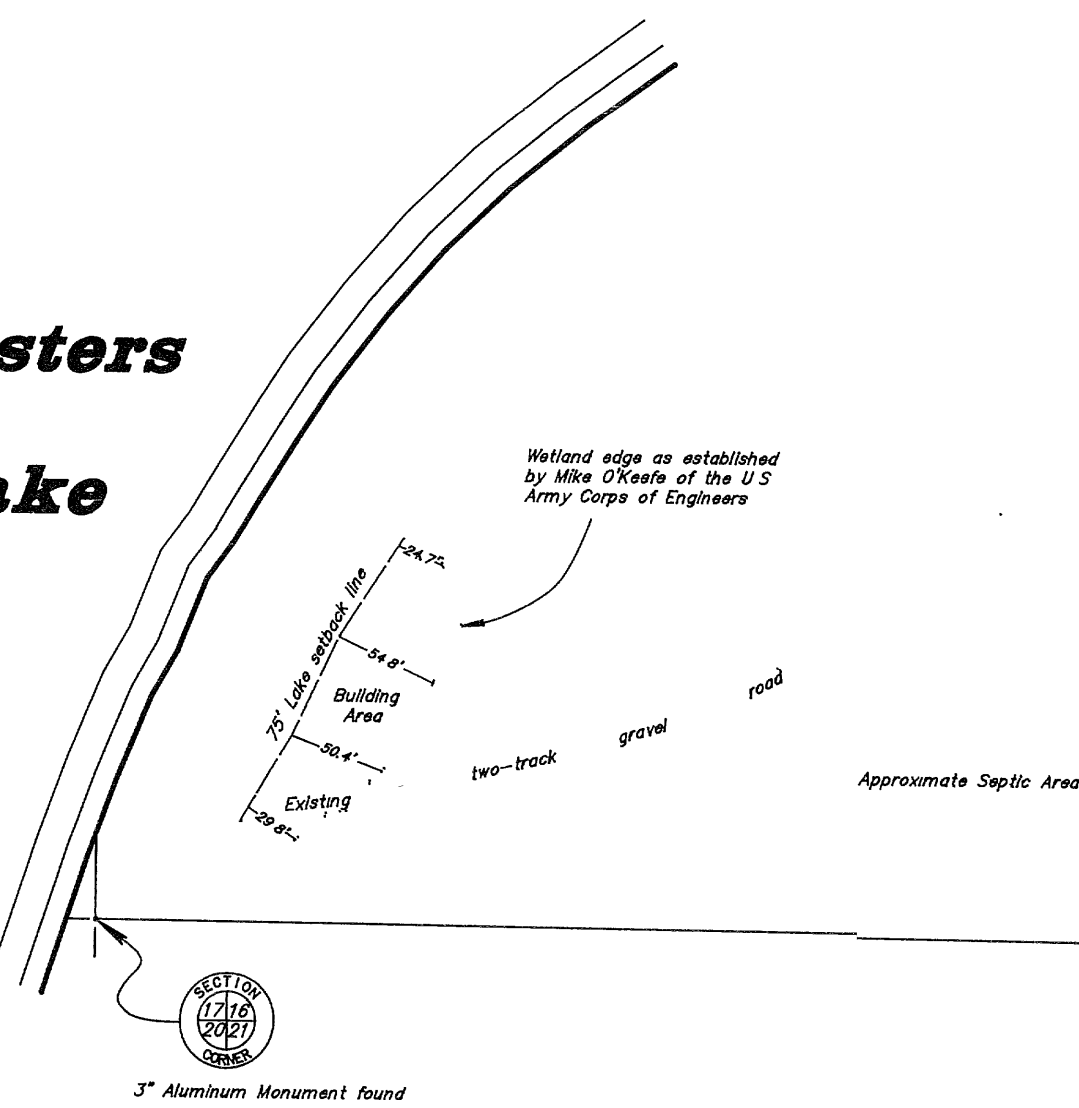


MAP # C1115
DATE FILED FEB 06 1995
BY JB
DESCRIPTION FILED
ONEIDA CO. SURVEYOR'S OFFICE

Part of
GOV'T. LOT 11
and part of the
SE1/4 of the SW1/4
SECTION 16, T38N, R8E
Town of Newbold
Oneida County, Wisconsin



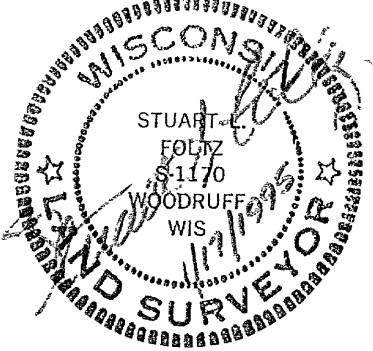
**Two Sisters
Lake**



SE - SW

Black Lake Road

I hereby certify that this survey and the above map were made in accordance with acceptable professional standards and that the information contained thereon is, to the best of my knowledge, information and belief, a true and accurate representation thereof.
Any legal descriptions conforming to this survey have been provided on separate sheets.
The above survey was made by order of Richard O. Wikert



I hereby certify that the wetland edge shown on this map was determined in the field by me and is acceptable to the U.S. Army Corps of Engineers for the delineation of the building site area to be used by Richard O. Wikert for anticipated construction on this parcel.
Mike O'Keefe
Mike O'Keefe, U.S. Army Corps of Engineers Date 2/2/95