

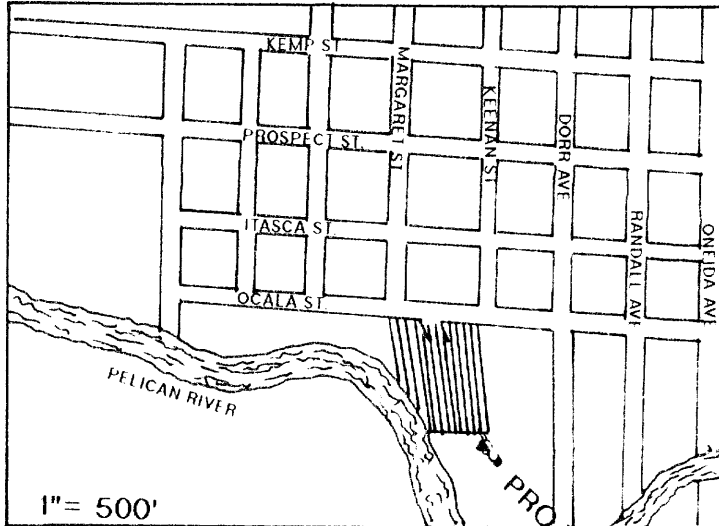
LOTS 1,2,3,AND PART OF LOT 4, BLOCK 7, AND  
LOTS 4,5,6,7,8,9,AND PART OF LOT 10, BLOCK 6,  
ALL IN PELICAN ADDITION TO THE CITY OF RHINELANDER,  
ONEIDA COUNTY, WISCONSIN

MAP # C1425  
DATE FILED, FEB 02 1998  
BY.....  
DESCRIPTION FILED.....  
ONEIDA CO. SURVEYOR'S OFFICE

N

BEARINGS REFERENCED TO THE NORTH LINE OF BLOCK 6  
PELICAN ADDITION TO THE CITY OF RHINELANDER ASSUMED  
TO BEAR S 88°48'44" E

LOCATION SKETCH



N

TO MINISTRY HEALTH CARE, INC. AND CHICAGO TITLE COMPANY, THIS IS TO CERTIFY THAT THIS MAP OR PLAT AND THE  
SURVEY ON WHICH IT IS BASED WERE MADE IN ACCORDANCE WITH "MINIMUM STANDARD DETAIL REQUIREMENTS FOR  
ALTA/ACSM LAND TITLE SURVEYS" JOINTLY ESTABLISHED AND ADOPTED BY ALTA AND ACSM IN 1992, AND MEETS THE  
ACCURACY REQUIREMENTS OF A CLASS B SURVEY, AS DEFINED THEREIN, SUBJECT TO THE FOLLOWING EXCEPTIONS  
5 & 9 OF TABLE A THEREOF

RUSSELL F. BROWN

REGISTRATION NO.

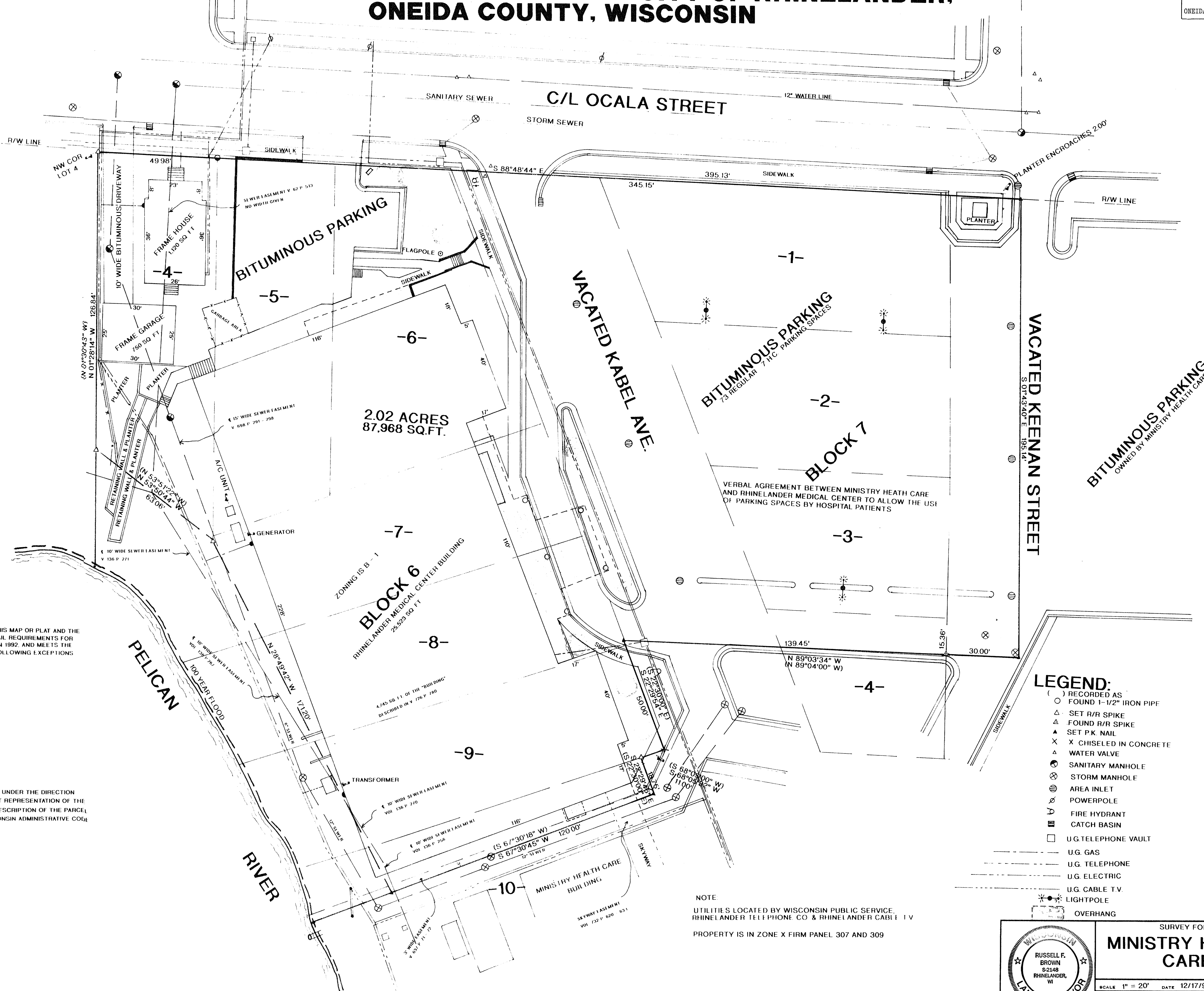
I, RUSSELL F. BROWN, HEREBY CERTIFY THAT I HAVE SURVEYED THE ABOVE PARCEL OF LAND UNDER THE DIRECTION  
OF VON BRIESEN, PURTELL & ROPER, S.C. AND THAT THE ABOVE MAP IS A TRUE AND CORRECT REPRESENTATION OF THE  
LANDS SURVEYED TO THE BEST OF MY KNOWLEDGE AND BELIEF THAT I HAVE PROVIDED A DESCRIPTION OF THE PARCEL  
ON A SEPARATE SHEET THAT I HAVE COMPLIED WITH THE PROVISIONS OF 7 OF THE WISCONSIN ADMINISTRATIVE CODE

Russell F. Brown

1/13/98

RUSSELL F. BROWN

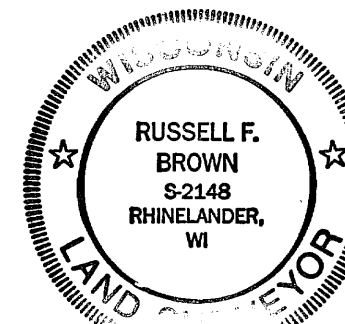
DATE



LEGEND:

- ( ) RECORDED AS
- FOUND 1-1/2" IRON PIPE
- △ SET R/R SPIKE
- △ FOUND R/R SPIKE
- ▲ SET P.K. NAIL
- X CHISELED IN CONCRETE
- △ WATER VALVE
- SANITARY MANHOLE
- STORM MANHOLE
- AREA INLET
- POWERPOLE
- FIRE HYDRANT
- CATCH BASIN
- U.G. TELEPHONE VAULT
- U.G. GAS
- U.G. TELEPHONE
- U.G. ELECTRIC
- U.G. CABLE T.V.
- LIGHTPOLE
- OVERHANG

NOTE  
UTILITIES LOCATED BY WISCONSIN PUBLIC SERVICE,  
RHINELANDER TELEPHONE CO. & RHINELANDER CABLE T.V.  
PROPERTY IS IN ZONE X FIRM PANEL 307 AND 309



SURVEY FOR  
**MINISTRY HEALTH  
CARE**

SCALE 1" = 20' DATE 12/17/97 OWN BY R.B.  
DWG. NO. 0822 GENISOT AND ASSOCIATES, INC.