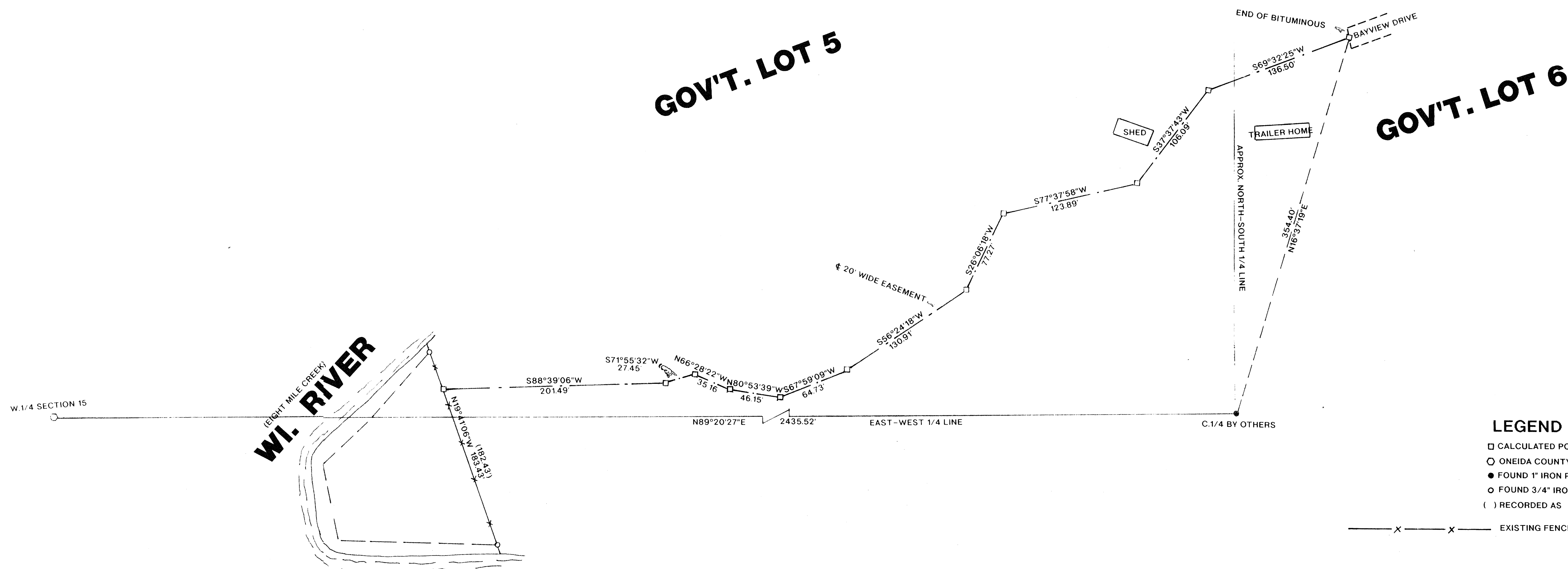
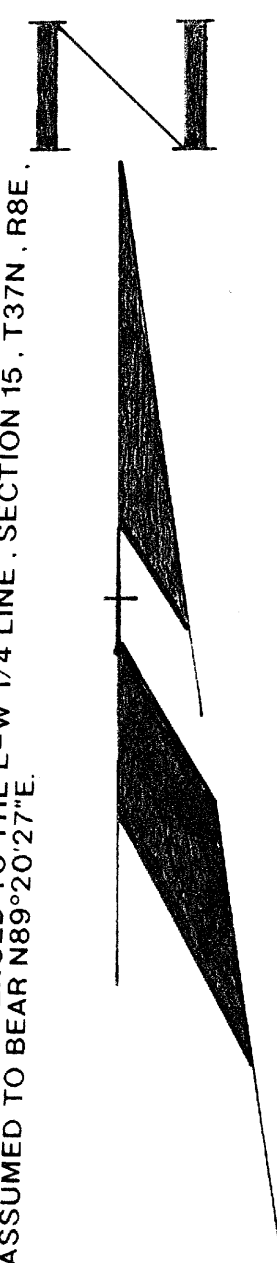


AN EASEMENT LOCATED IN GOV'T. 5 AND 6 , SECTION 15 , T37N , R8E , TOWN OF NEWBOLD , ONEIDA COUNTY , WISCONSIN

BEARINGS REFERENCED TO THE E-W 1/4 LINE - SECTION 15, T37N, R8E,
ASSUMED TO BEAR N89°20'27"E

I, WILLIAM E. BANDOW, HEREBY CERTIFY THAT I HAVE SURVEYED THE ABOVE EASEMENT UNDER THE DIRECTION OF LARRY GATES AND THAT THE ABOVE MAP IS A TRUE AND CORRECT REPRESENTATION OF THE EASEMENT TO THE BEST OF MY KNOWLEDGE AND BELIEF. THAT I HAVE PROVIDED A DESCRIPTION OF THE EASEMENT ON A SEPARATE SHEET, THAT I HAVE COMPLIED WITH THE PROVISIONS OF AE 7 OF THE WISCONSIN ADMINISTRATIVE CODE.

William E. Bandow
WILLIAM E. BANDOW

11-12-98
DATE

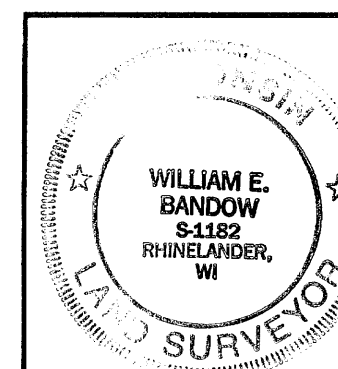
MAP # C1526

DATE FILED DEC. 04, 1998

BY *JB*

DESCRIPTION FILED

ONEIDA CO. SURVEYOR'S OFFICE



EASEMENT FOR
LARRY GATES

SCALE 1"=50' DATE 07/21/98 DWN. BY K.B.

DWG. NO. 9830 GENISOT AND ASSOCIATES, INC.
RHINELANDER, WIS.