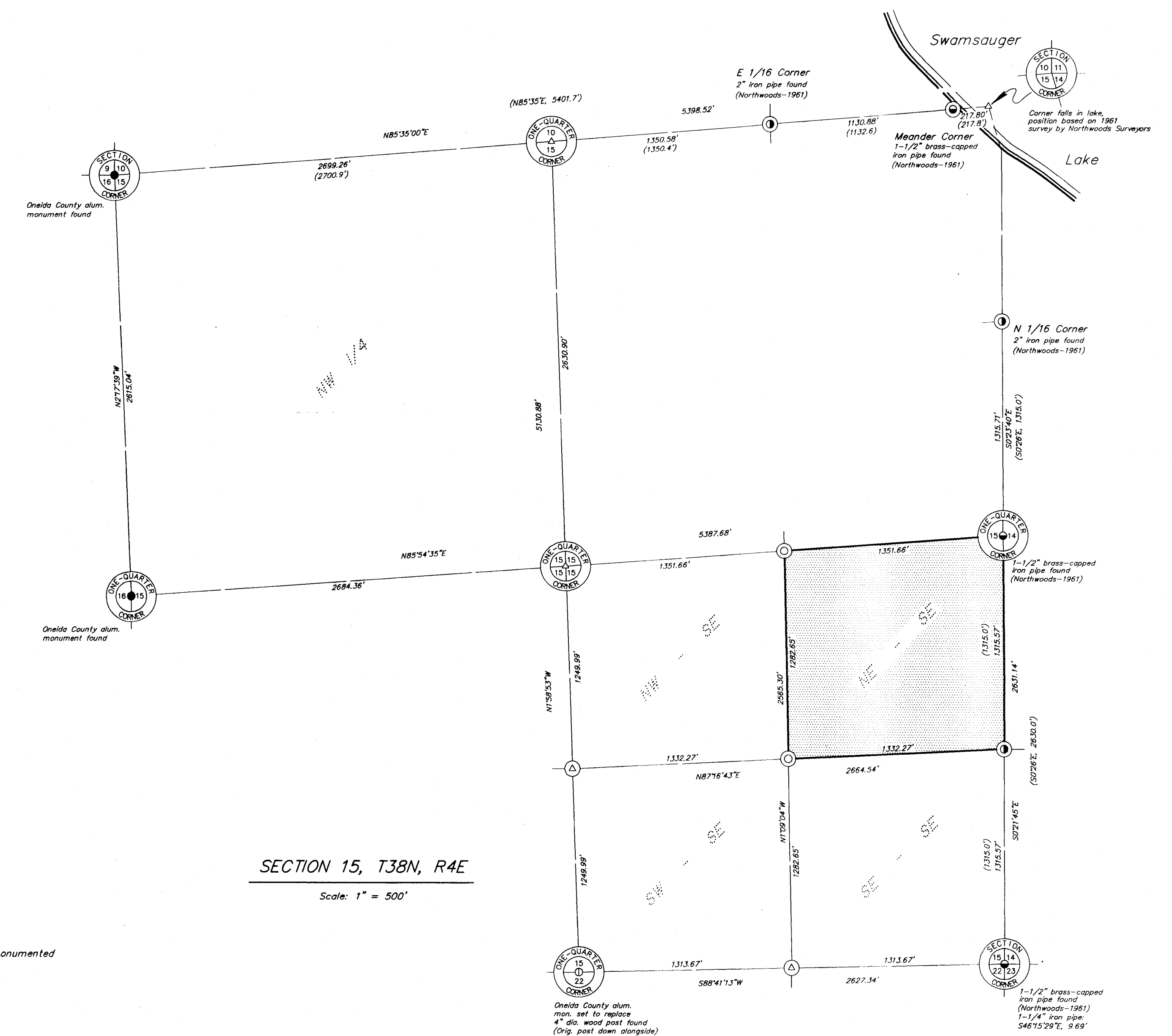
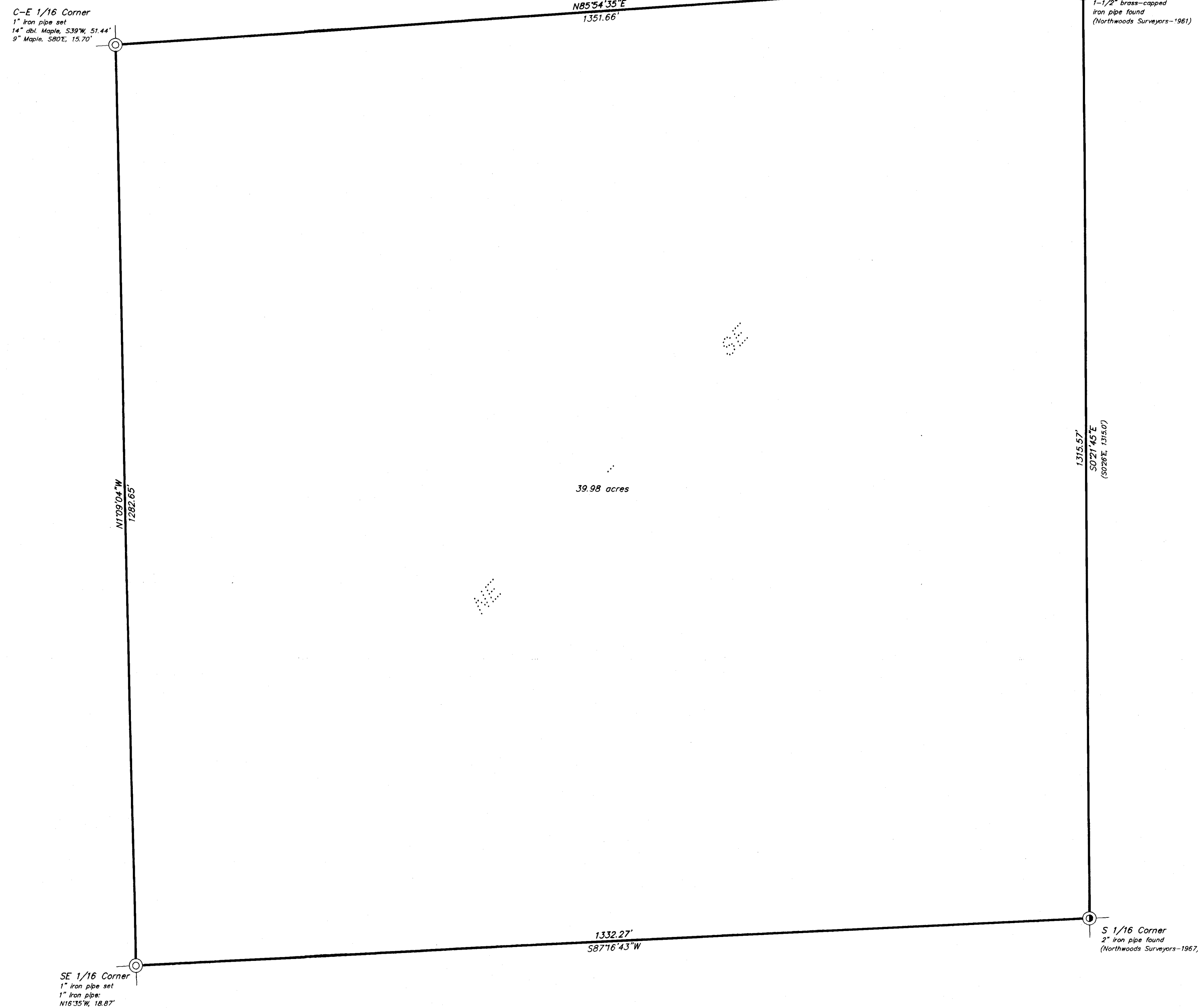


MAP # C1827
 DATE FILED AUG 16 2001
 BY RLD
 DESCRIPTION FILED
 ONEIDA CO. SURVEYOR'S OFFICE

All of the
NE1/4 of the SE1/4
SECTION 15, T38N, R4E

Town of Minocqua
 Oneida County, Wisconsin



△ = computed point, not monumented
 () = previously recorded

NOTE: This survey is based on title information contained in Chicago Title Insurance Co. ALTA Commitment No. ON 28645, effective June 26, 2001, issued by Oneida Title & Abstract, Inc. of Rhinelander, WI.

NOTE: All iron pipe diameters shown hereon are nominal dimensions.

Foltz and Associates, Inc.
 Surveyors Engineers
 8612 Highway 51 North, Minocqua, Wisconsin 54548
 (715) 356-9485 fax (715) 356-1841

C. Winkler 9-15-384