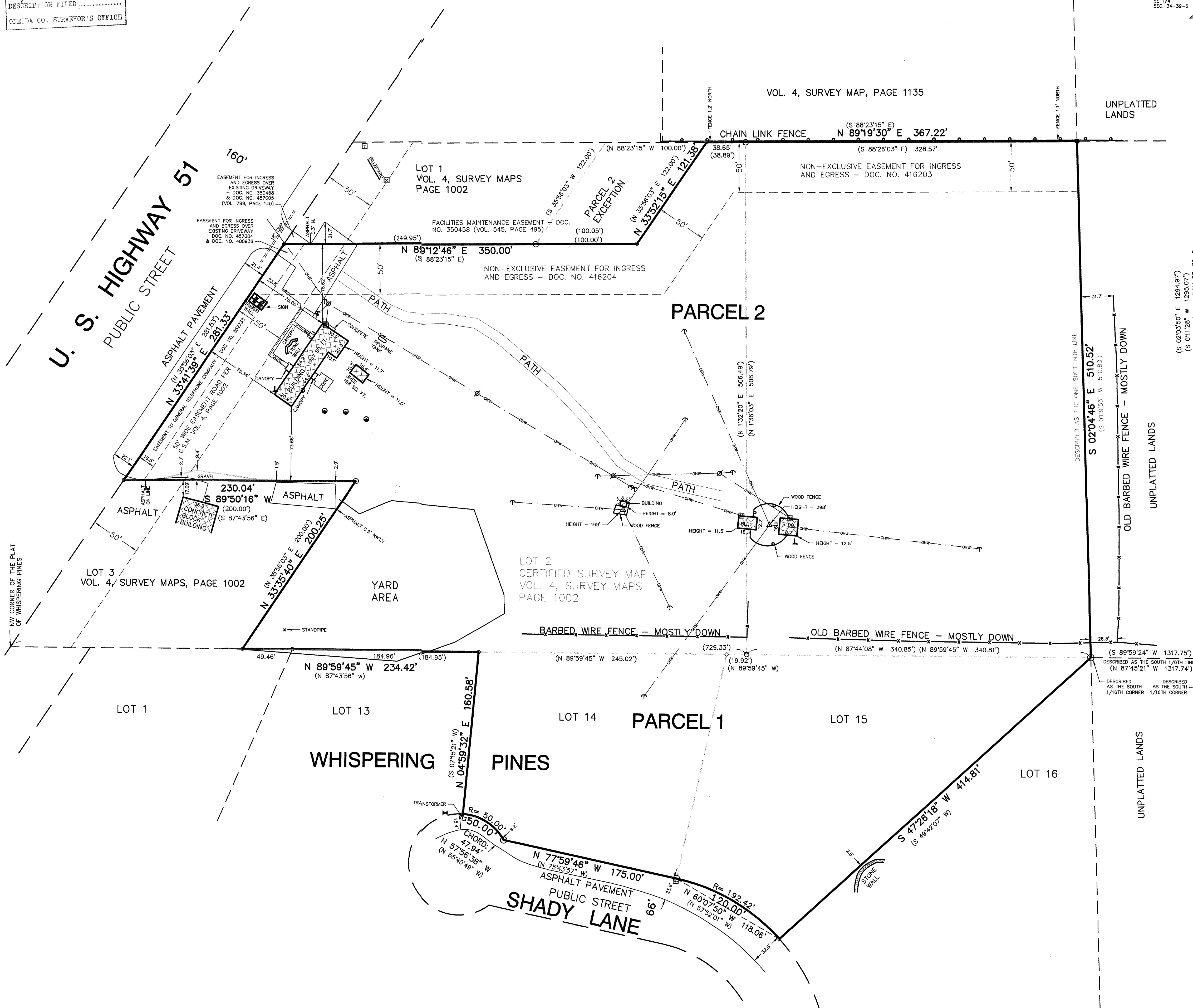


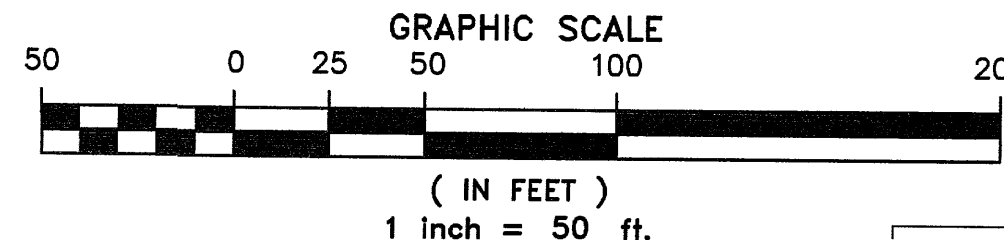
# ALTA/ACSM LAND TITLE SURVEY

MAP # 02271  
DATE FILED NOV 28 2003  
BY *[Signature]*  
DESCRIPTION FILED  
ONEIDA CO. SURVEYOR'S OFFICE

[illegible]

## LEGEND

- NOTES:
1. BEARINGS ARE BASED ON THE EASTERLY LINE OF THE STATE TRUNK HIGHWAY "51" WHICH IS FORMED BY THE NORTH LINE OF SECTION 36, TOWNSHIP 36N, RANGE 10E, MERIDIAN 10W.
2. THIS SURVEY WAS PREPARED BASED ON CHICAGO TITLE INSURANCE COMPANY TITLE COMMITMENT NO. 01-31200, EFFECTIVE DATE OF JANUARY 27, 2017, WHICH LISTS THE FOLLOWING EASEMENTS TO BE REMOVED:
- A. COVENANTS, CONDITIONS AND RESTRICTIONS EXECUTED BY GILES COMPANY, A WISCONSIN CORPORATION DATED JANUARY 30, 1979 AND RECORDED JUNE 21, 1979 IN VOLUME 47 OF RECORDS ON PAGE 619. AFFECTS SITE BY LOCATION - GENERAL IN NATURE, NOT PLOTTED.
- B. FOREFEITURE OR REVERSION OF TITLE IN CASE OF VIOLATION (AFFECTS PARCEL 1) RESTRICTIONS CANNOT BE REMOVED BY THIS INSTRUMENT.
- C. TITLE EASEMENT EXECUTED BY LAKE KATHERINE IMPROVEMENT COMPANY TO WISCONSIN VALLEY ELECTRIC COMPANY DATED JULY 31, 1911 AND RECORDED MARCH 5, 1930 IN VOLUME 118 OF RECORDS ON PAGE 618. AFFECTS SITE BY LOCATION - GENERAL IN NATURE, CANNOT BE PLOTTED.
- D. MINERAL RESERVATION CONTAINED IN WARRANTY DEED EXECUTED BY NEWTON S. MURPHY TO WISCONSIN VALLEY ELECTRIC COMPANY DATED MARCH 7, 1938 AND RECORDED OCTOBER 1, 1939 IN VOLUME 3, OF DEEDS ON PAGE 1900. AFFECTS SITE BY LOCATION - GENERAL IN NATURE, CANNOT BE PLOTTED.
- E. MINERAL RESERVATION CONTAINED IN WARRANTY DEED EXECUTED BY YANKEE LINCOLN COMPANY TO CHARLES STEELE DATED MAY 31, 1906 AND RECORDED JUNE 1, 1906 IN VOLUME 47 OF RECORDS ON PAGE 619. AFFECTS SITE BY LOCATION - GENERAL IN NATURE, CANNOT BE PLOTTED.
- F. MINERAL RESERVATION DATED DECEMBER 13, 1980 AND RECORDED JUNE 12, 1987 IN VOLUME 1 OF RECORDS ON PAGE 619. AFFECTS SITE BY LOCATION - GENERAL IN NATURE, CANNOT BE PLOTTED.
- G. TITLE EASEMENT EXECUTED BY CHAS. STEEL AND ELA STEEL, HIS WIFE TO WISCONSIN VALLEY ELECTRIC COMPANY DATED JANUARY 30, 1979 AND RECORDED JUNE 21, 1979 IN VOLUME 47 OF RECORDS ON PAGE 620. AFFECTS SITE BY LOCATION - GENERAL IN NATURE, CANNOT BE PLOTTED.
- H. TITLE EASEMENT EXECUTED BY A.H. LANGE TRUST TO GENERAL PUBLIC TELEPHONE COMPANY OF WISCONSIN DATED SEPTEMBER 3, 1906 AND RECORDED SEPTEMBER 3, 1906 IN VOLUME 300 OF RECORDS ON PAGE 58 AND DOCUMENT NO. 30273. AFFECTS SITE BY LOCATION - GENERAL IN NATURE, CANNOT BE PLOTTED.
- I. RESERVATION OF RIGHT OF WAY EASEMENT CONTAINED IN WARRANTY DEED EXECUTED BY RICHARD L. JUSTIN TO RAVEN BROADCASTING CORP. A WISCONSIN CORPORATION DATED JANUARY 1, 1993 AND RECORDED JANUARY 1, 1993 IN VOLUME 963 OF RECORDS ON PAGE 453 AS DOCUMENT NO. 416203. AFFECTS SITE BY LOCATION - SHOWN.
- J. RIGHT OF WAY EASEMENT GRANTED IN WARRANTY DEED EXECUTED BY RAVEN BROADCASTING CORP. A WISCONSIN CORPORATION DATED JANUARY 1, 1993 AND RECORDED JANUARY 1, 1993 IN VOLUME 963 OF RECORDS ON PAGE 451, AS DOCUMENT NO. 416203. AFFECTS SITE BY LOCATION - SHOWN.
- K. RIGHT OF WAY EASEMENT RESERVATION IN QUILT CLAIM DEED EXECUTED BY ROLAND R. MCNULT, JR. TRUSTEE OF THE ROLAND R. MCNULT, JR. REVOCABLE TRUST DATED JANUARY 1, 1993 AND RECORDED JANUARY 1, 1993 IN VOLUME 963 OF RECORDS ON PAGE 450. AFFECTS SITE BY LOCATION - SHOWN.
3. THERE IS NO OBSERVABLE EVIDENCE OF EARTH MOVING, BUILDING CONSTRUCTION OR BUILDING ADDITIONS WITHIN RECENT MONTHS.

[illegible]

**National Survey & Engineering**

Telephone 262-781-1000  
Facsimile 262-797-7373  
16745 W. Bluemound Road  
Suite 200  
Brookfield, WI 53005-5938  
[www.nseag.com](http://www.nseag.com)

