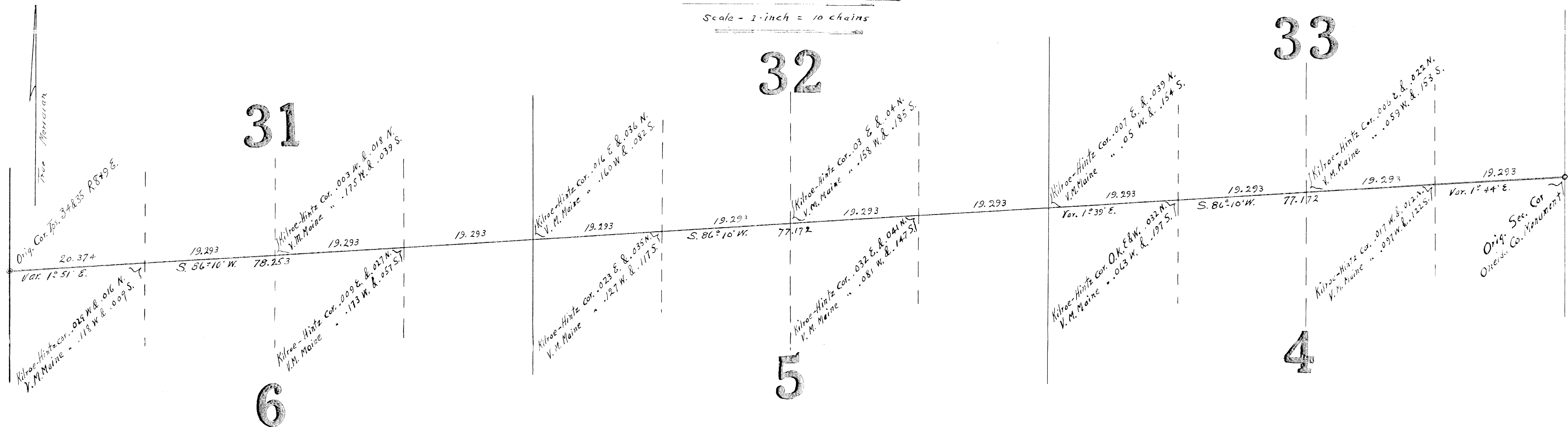


WEST HALF OF SOUTH LINE

of

Tp. 35 N. R. 9 E. Wis.

Scale - 1-inch = 10 chains



Certificate

I, Harry C. Hall, do hereby certify, that in December, 1936 I checked the line and distance between the original southeast corner of section 33 and original southwest corner of section 31 of Township 35 North, Range 9 East, Wisconsin as recently run by three other survey parties. That my measurements and observations were conducted upon a trial transit line initiated at the southeast corner of section 33 and terminating sixty seven and seven tenths links northerly of Township corner, with angular tie-ins to posts and monuments in question. That in projecting this trial line every foresight was doubled to insure accuracy of alignment. That my trial line coincided with that of D. A. Hintz for the first one half mile when a gradual divergence was noted, Hintz line falling some four feet south of mine at the west line of township. That the plat hereon drawn correctly represents the calculated results of my survey and its relation to other markers. That the distances being shown as of 62 degrees Fahr. in chains and decimals thereof. That the true azimuth of the line was determined by observations on Polaris and the alignment adjusted for curvature in accordance with the U. S. G. L. O. Manual of Instructions. That the claim that all original intermediate corners along this line are lost could not be verified by me due to snowfall. That the letters N.-S.-E.-W. as hereon applied to adjacent posts refer to measurements taken perpendicular to or parallel with the township boundary as run.

Rhineclander, Wis.
Jan. 2nd 1937

Harry C. Hall
surveyor