

MAP # 02553
DATE FILED MAR. 31 2008
BY PDA
DESCRIPTION FILED
ONEIDA CO. SURVEYOR'S OFFICE

PARCELS IN GOV. LOT 2, SECTION 6, TOWNSHIP 37 NORTH, RANGE 9 EAST, ONEIDA COUNTY, WISCONSIN.

02553

S I L V E R L A K E

S. 87°-12' E. 1177.7
SECTION LINE
MEANDER CORNER
BEARING TREES:
NORWAY PINE 12" S. 29° W. 12.8 FT.
NORWAY PINE 11" N. 77° E. 29.1 FT.

NORTH

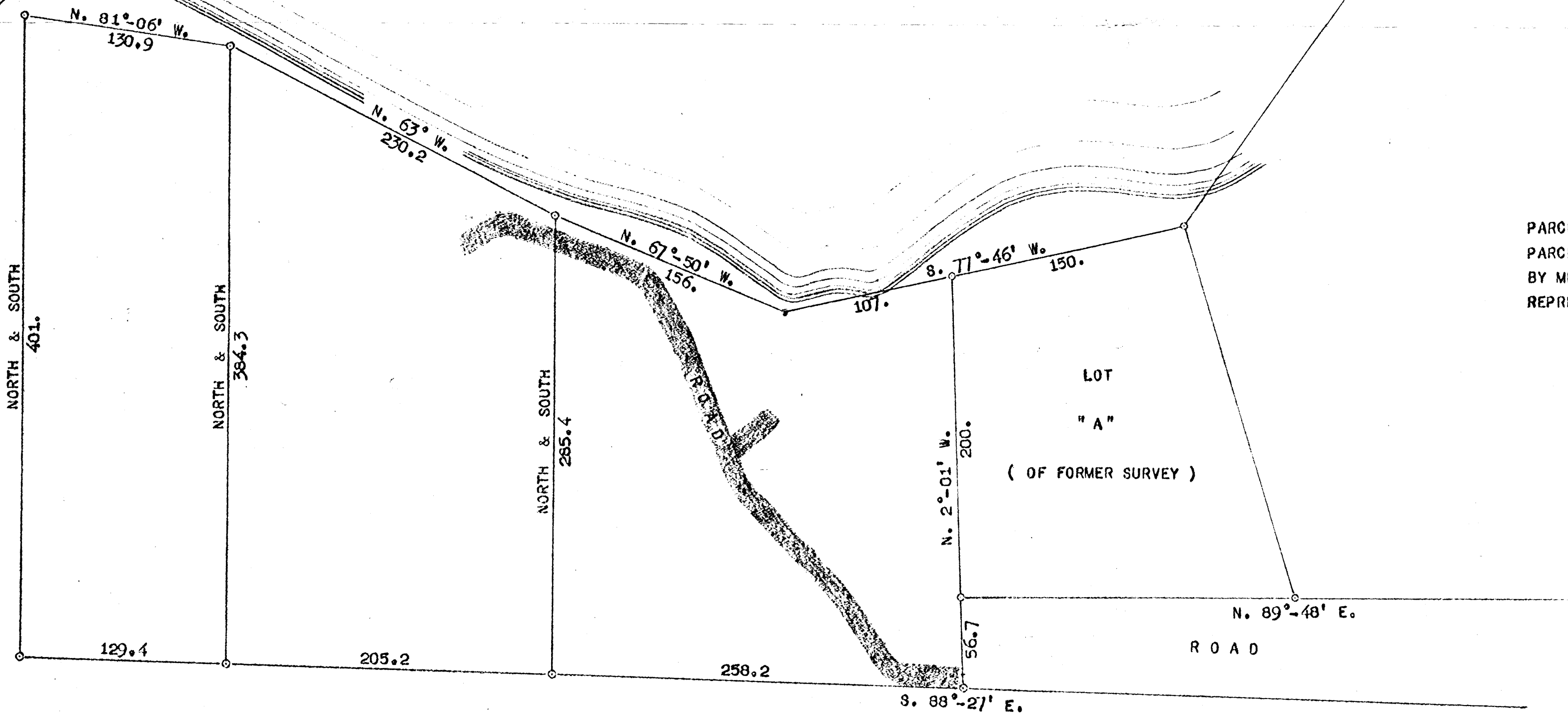
SCALE
1 INCH = 60. FT.

SURVEYOR'S CERTIFICATE

I, KEITH M. HALL, HEREBY CERTIFY THAT I HAVE SURVEYED THE PARCELS OF LAND HAVING FRONTAGE ON SILVER LAKE LYING WEST OF THOSE PARCELS FORMERLY SURVEYED AS HEREON SHOWN; THAT THIS MAP WAS MADE BY ME, AND IS TO THE BEST OF MY KNOWLEDGE AND BELIEF A CORRECT REPRESENTATION OF MY FIELD SURVEY,

SIGNED THIS 19 TH DAY OF JULY 1962.

Keith M. Hall
KEITH M. HALL
REGISTERED LAND SURVEYOR NO. 3 - 594.
RHINELANDER, WISCONSIN.



02553

02553