

MAP # C 2878
DATE FILED: 1-27-16
BY: [Signature]
DESCRIPTION FILED
ONEIDA CO. SURVEYOR'S OFFICE

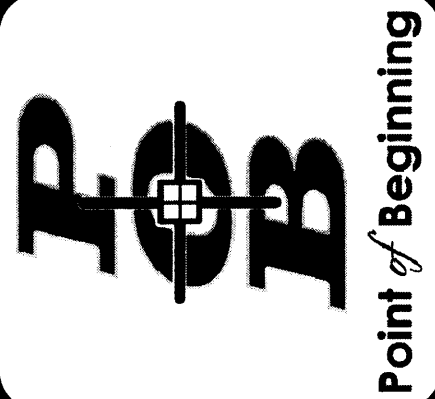
REVISIONS	
CHECKED:	DONALD J. BUZA
DRAWN:	TRAVIS PLATTICO
DATE	10-25-15
PROJECT NO.	15.505

TOPOGRAPHIC MAP

LELAH STARKS
POTATO FARM BUILDING
TOWN OF CASSIAN
ONEIDA COUNTY, WISCONSIN

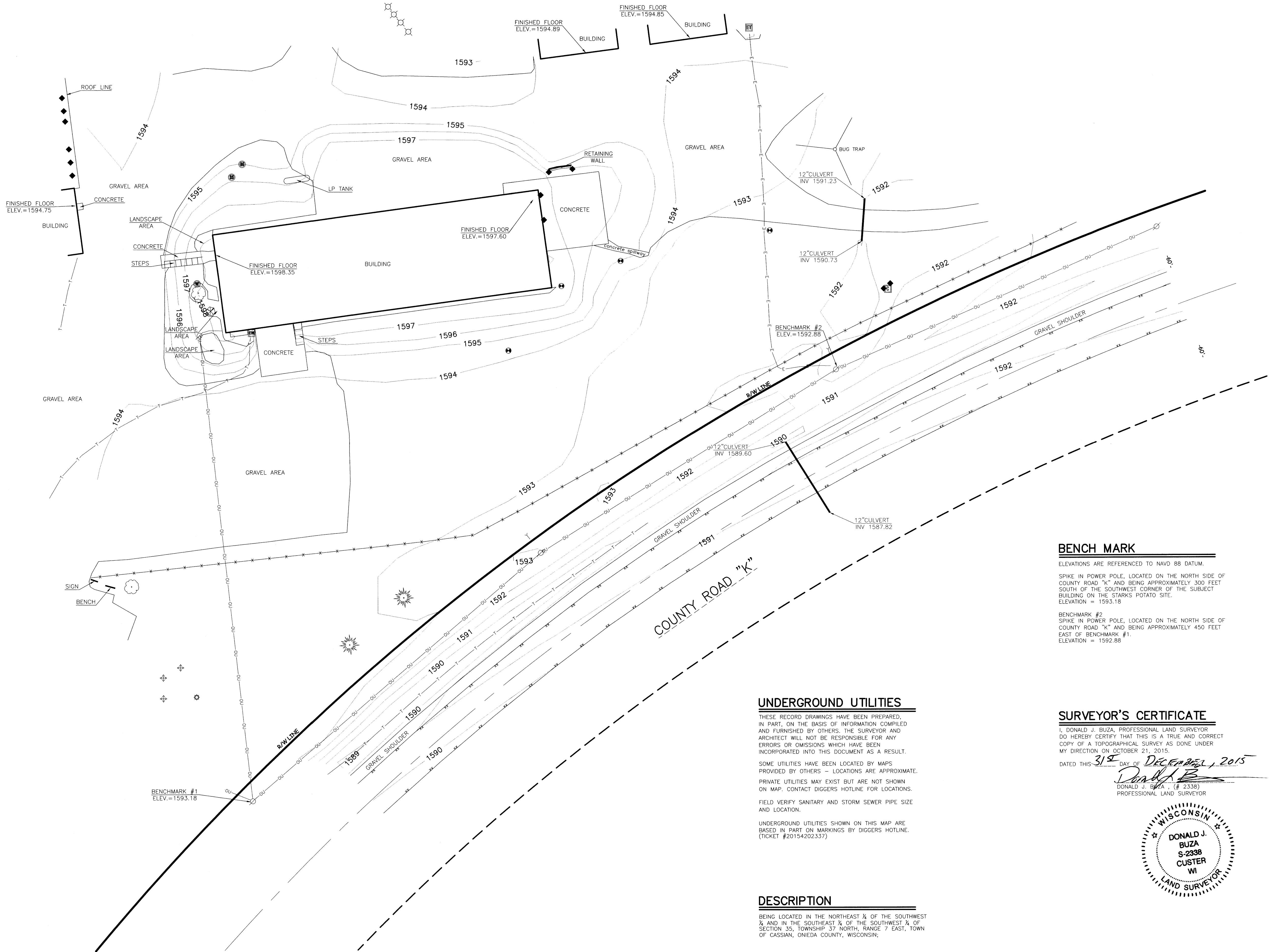
Civil Engineering
Land Surveying
Landscape Architecture

5709 Windy Drive, Suite D
Stevens Point, WI 54482
715.344.9999(PH) 715.344.9922(FX)



TOPO

- LEGEND**
- These standard symbols will be found in the drawing.
- OVERHEAD UTILITIES
 - BURIED ELECTRIC
 - BURIED TELEPHONE
 - FENCE LINE
 - EDGE OF BITUMINOUS
 - CONTOUR LINE
 - SEPTIC MANHOLE
 - WELL
 - ELECTRIC METER
 - ELECTRIC TRANSFORMER
 - POWERPOLE
 - BOLLARD
 - GUY WIRE
 - GAUDD POST
 - SOIL BORING
 - VENT PIPE
 - CONTROL BOX
 - FLAGPOLE
 - BUSH/SHRUB
 - TREE
 - PINE TREE



BENCH MARK

ELEVATIONS ARE REFERENCED TO NAVD 88 DATUM.

SPIKE IN POWER POLE, LOCATED ON THE NORTH SIDE OF COUNTY ROAD "K" AND BEING APPROXIMATELY 300 FEET SOUTH OF THE SOUTHWEST CORNER OF THE SUBJECT BUILDING ON THE STARKS POTATO SITE.
ELEVATION = 1593.18

BENCHMARK #2
SPIKE IN POWER POLE, LOCATED ON THE NORTH SIDE OF COUNTY ROAD "K" AND BEING APPROXIMATELY 450 FEET EAST OF BENCHMARK #1.
ELEVATION = 1592.88

UNDERGROUND UTILITIES

THESE RECORD DRAWINGS HAVE BEEN PREPARED, IN PART, ON THE BASIS OF INFORMATION COMPILED AND FURNISHED BY OTHERS. THE SURVEYOR AND ARCHITECT WILL NOT BE RESPONSIBLE FOR ANY ERRORS OR OMISSIONS WHICH HAVE BEEN INCORPORATED INTO THIS DOCUMENT AS A RESULT.

SOME UTILITIES HAVE BEEN LOCATED BY MAPS PROVIDED BY OTHERS - LOCATIONS ARE APPROXIMATE.

PRIVATE UTILITIES MAY EXIST BUT ARE NOT SHOWN ON MAP. CONTACT DIGGERS HOTLINE FOR LOCATIONS.

FIELD VERIFY SANITARY AND STORM SEWER PIPE SIZE AND LOCATION.

UNDERGROUND UTILITIES SHOWN ON THIS MAP ARE BASED IN PART ON MARKINGS BY DIGGERS HOTLINE. (TICKET #20154202337)

DESCRIPTION

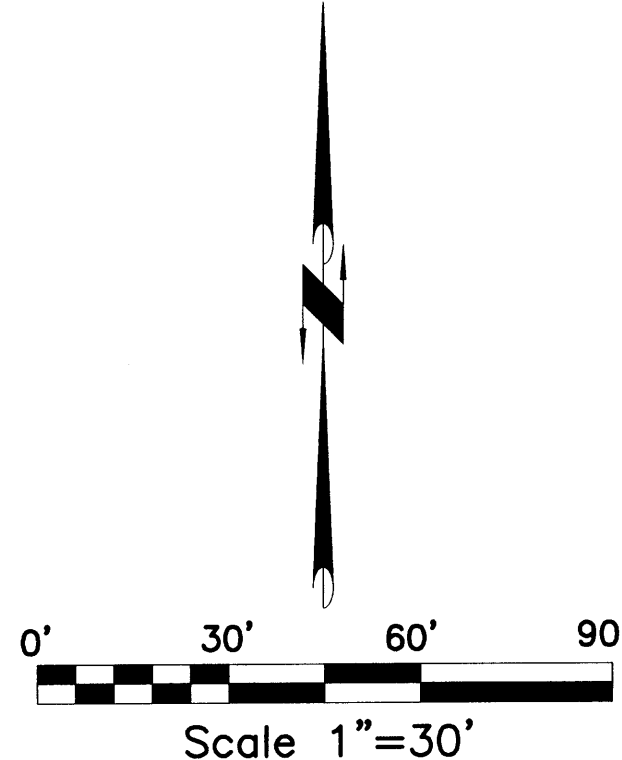
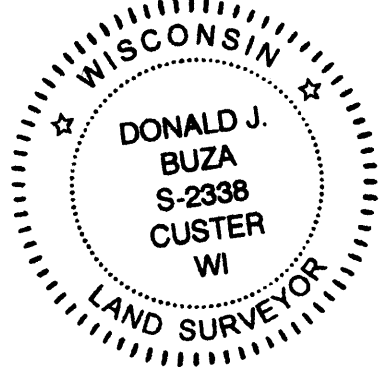
BEING LOCATED IN THE NORTHEAST 1/4 OF THE SOUTHWEST 1/4 AND IN THE SOUTHEAST 1/4 OF THE SOUTHWEST 1/4 OF SECTION 35, TOWNSHIP 37 NORTH, RANGE 7 EAST, TOWN OF CASSIAN, ONEIDA COUNTY, WISCONSIN;

SURVEYOR'S CERTIFICATE

I, DONALD J. BUZA, PROFESSIONAL LAND SURVEYOR DO HEREBY CERTIFY THAT THIS IS A TRUE AND CORRECT COPY OF A TOPOGRAPHICAL SURVEY AS DONE UNDER MY DIRECTION ON OCTOBER 21, 2015.

DATED THIS 31ST DAY OF DECEMBER, 2015

[Signature]
DONALD J. BUZA, (# 2338)
PROFESSIONAL LAND SURVEYOR



POINT OF BEGINNING, INC. HOLDS THE RIGHTS TO COPYRIGHT IN AND TO THESE PRINTS, DRAWINGS AND DOCUMENTS. NO REPRODUCTION, COPYING, ALTERATION, MODIFICATION, IMAGE, INCORPORATION INTO OTHER DOCUMENTS OR ASSIGNMENT OF THE NAME MAY OCCUR WITHOUT THE PRIOR WRITTEN PERMISSION OF POINT OF BEGINNING, INC.

©2015 POINT OF BEGINNING, INC.