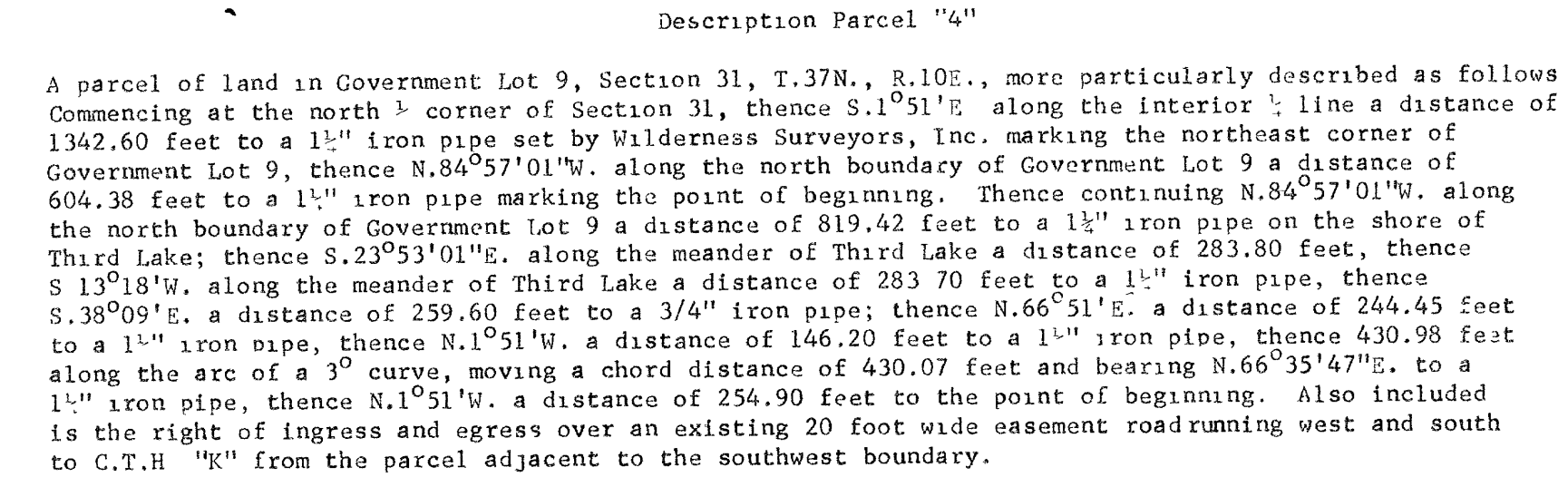


RECEIVED & FILED #C428
Oneida County Surveyor's Office
Date FEB 6 1988
By M J H
OCS Area #



NOTE Interior N-S quarter line of Section 31 and the north line of Government Lot 9 is that established by Wilderness Surveyors, Inc. in their 1976 resurvey of Section 30 and 31. The east and south boundaries of Parcel 4 are established by correcting the metes and bounds boundary of Parcels A-B-C-D-E and No. 1 to that survey.