

L1008

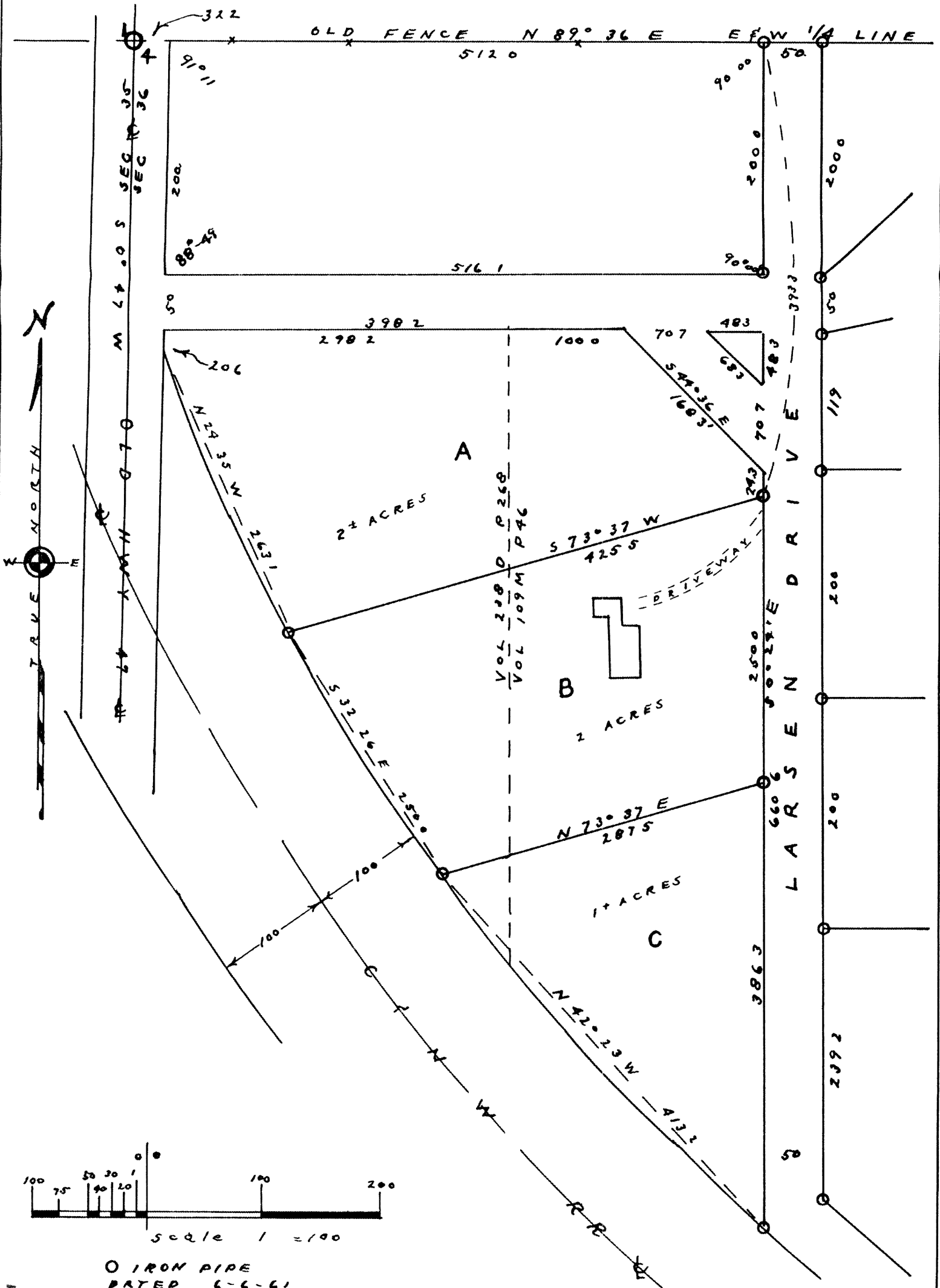
RECEIVED & FILED **L1008**  
 Onida County Surveyors Office  
 Date **JUL 25 1980**  
 By *JP*  
 OCS Area #

# SURVEY

FOR

## LLOYD MILLER

IN  
 THE NW 1/4-SW 1/4 SEC 36 T 37N R 8E  
 ONEIDA COUNTY WISCONSIN



L1008

by *M. Parker*  
 WISCONSIN

L1008