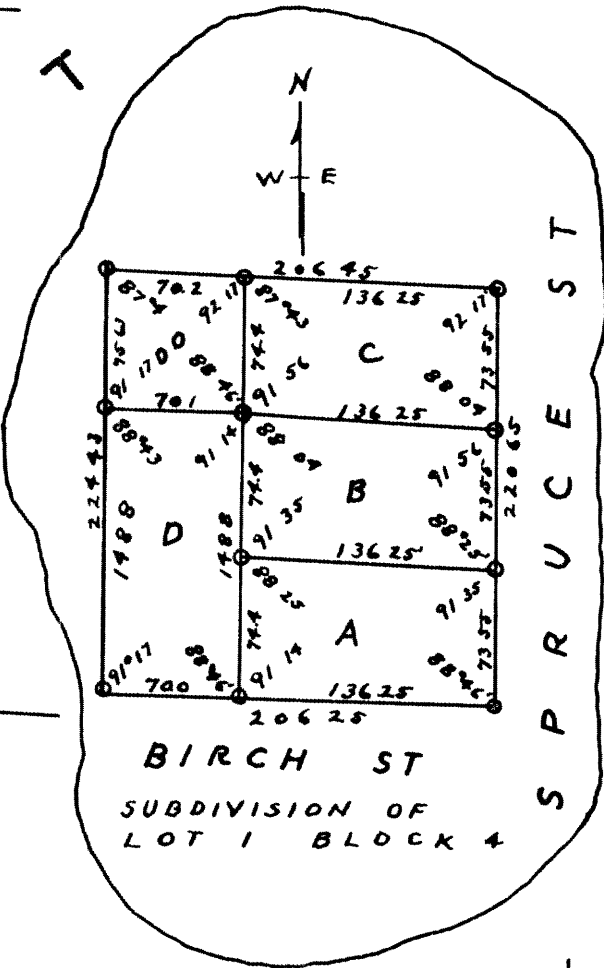
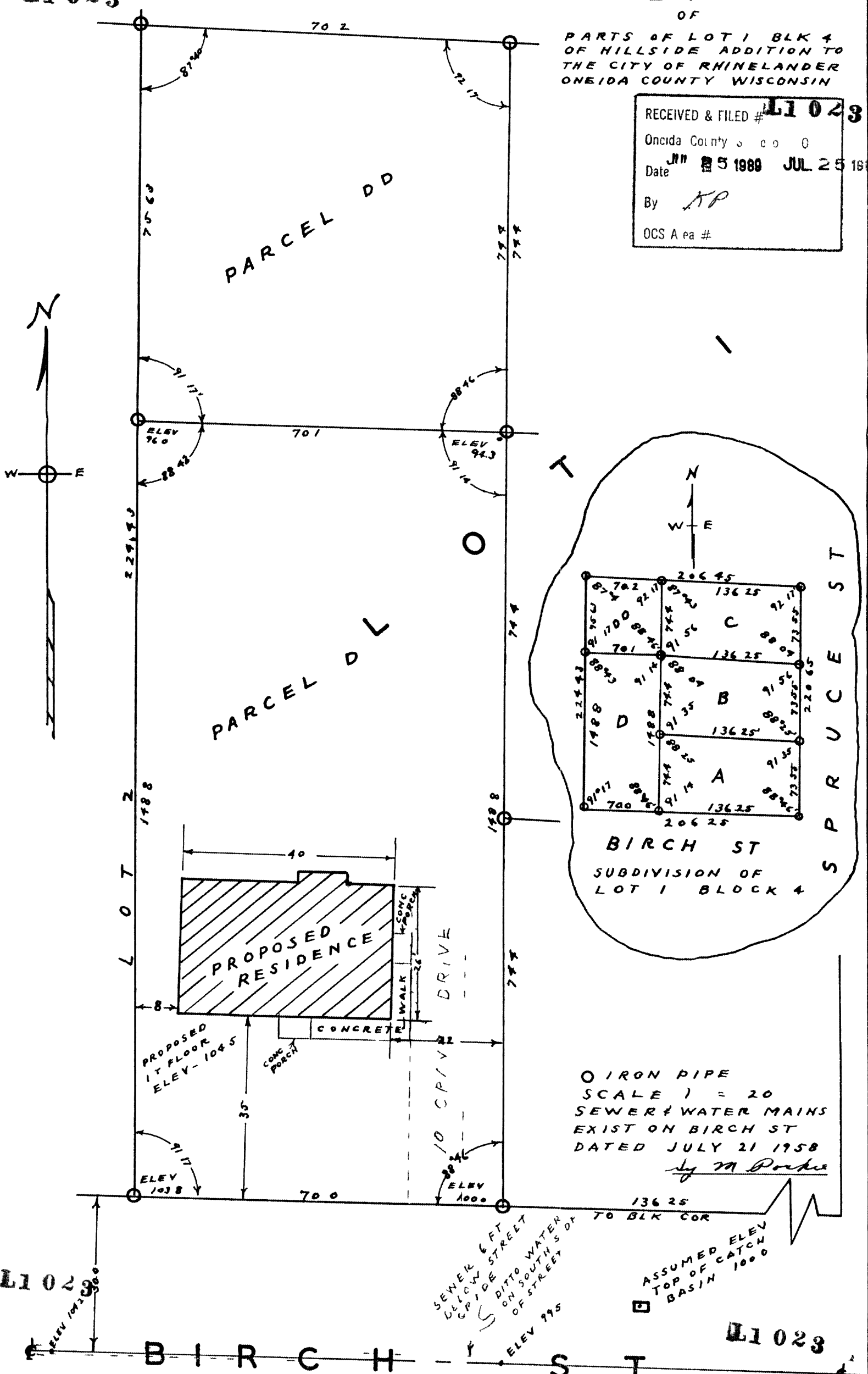


L1023 SURVEY FOR JAY BIXBY

OF

PARTS OF LOT 1 BLK 4
OF HILLSIDE ADDITION TO
THE CITY OF RHINELANDER
ONEIDA COUNTY WISCONSIN

RECEIVED & FILED # **L1023**
 Oneida County s c o 0
 Date **JUN 25 1960** JUL 25 1960
 By *MP*
 OCS A ea #



○ IRON PIPE
 SCALE 1" = 20'
 SEWER & WATER MAINS
 EXIST ON BIRCH ST
 DATED JULY 21 1958
By M. P. ...

SEWER 6 FT
 BELOW STREET
 CURB SIDE
 DITTO WATER
 ON SOUTH SIDE
 OF STREET
 ELEV 79.5

ASSUMED ELEV
 TOP OF CATCH
 BASIN 100.0

L1023
 ELEV 104.5

L1023

BIRCH ST