

RECEIVED & FILED # **L1030**
 On date (blank) 5
 Dat **JUL 25 1988**
 By *AD*
 OCS rep #

JERRY WALKER
 (JCHM)

Fun West L Smith
 Tom Smith
 9/18/85
 JCHM

L1030

USFS

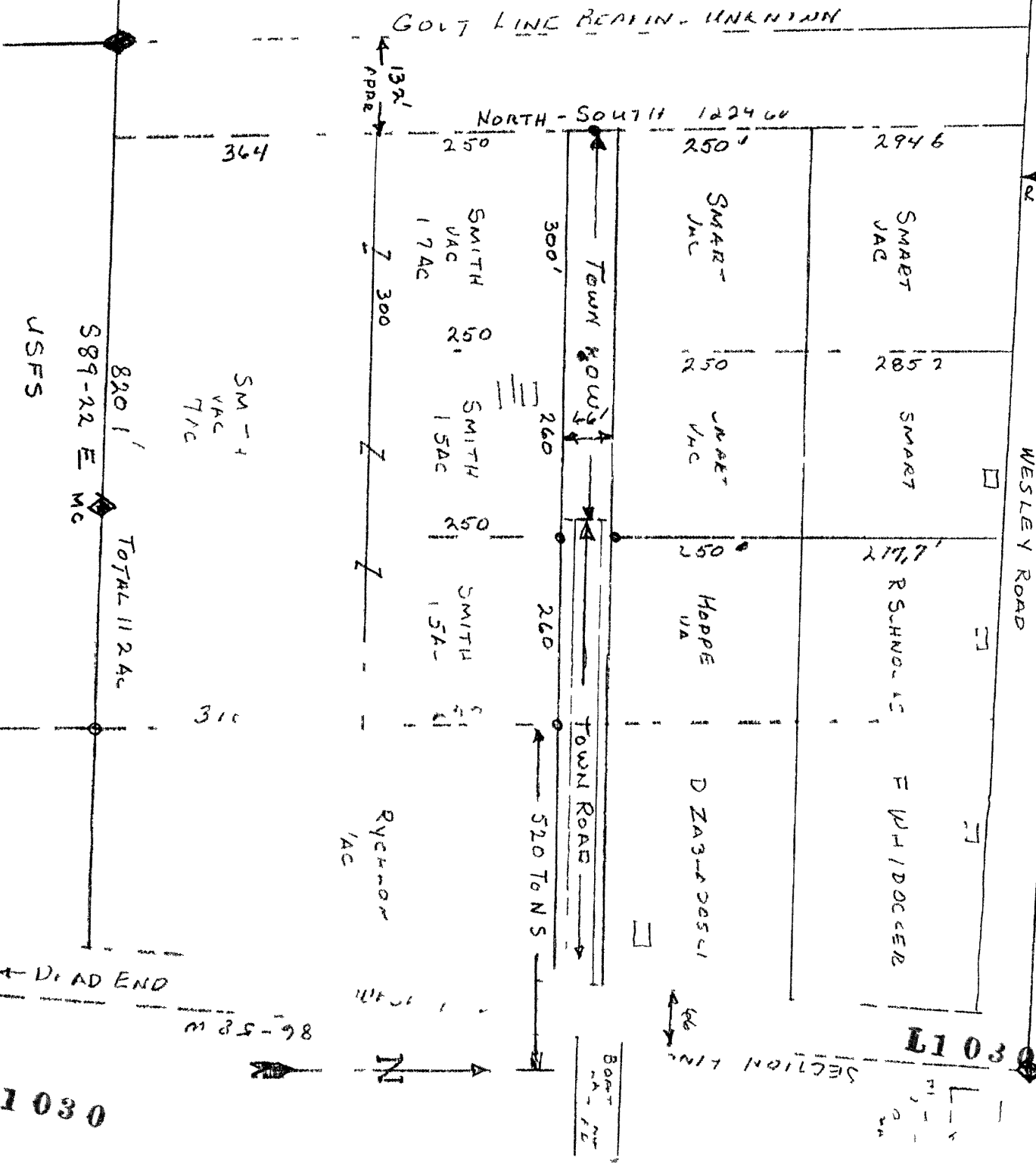
TO MILITA Y ROAD (2178)

N 88°-18' W

WESLEY ROAD

SECTION 4 N.E.

USFS



USFS

S89-22 E Mc

820' TOTAL 11.2 AC

SM-1
 VAC
 7/12

364

310

D LINK

DEAD END

86-58 W

N

L1030

L1030

SECTION LINE

1/4 SECTION