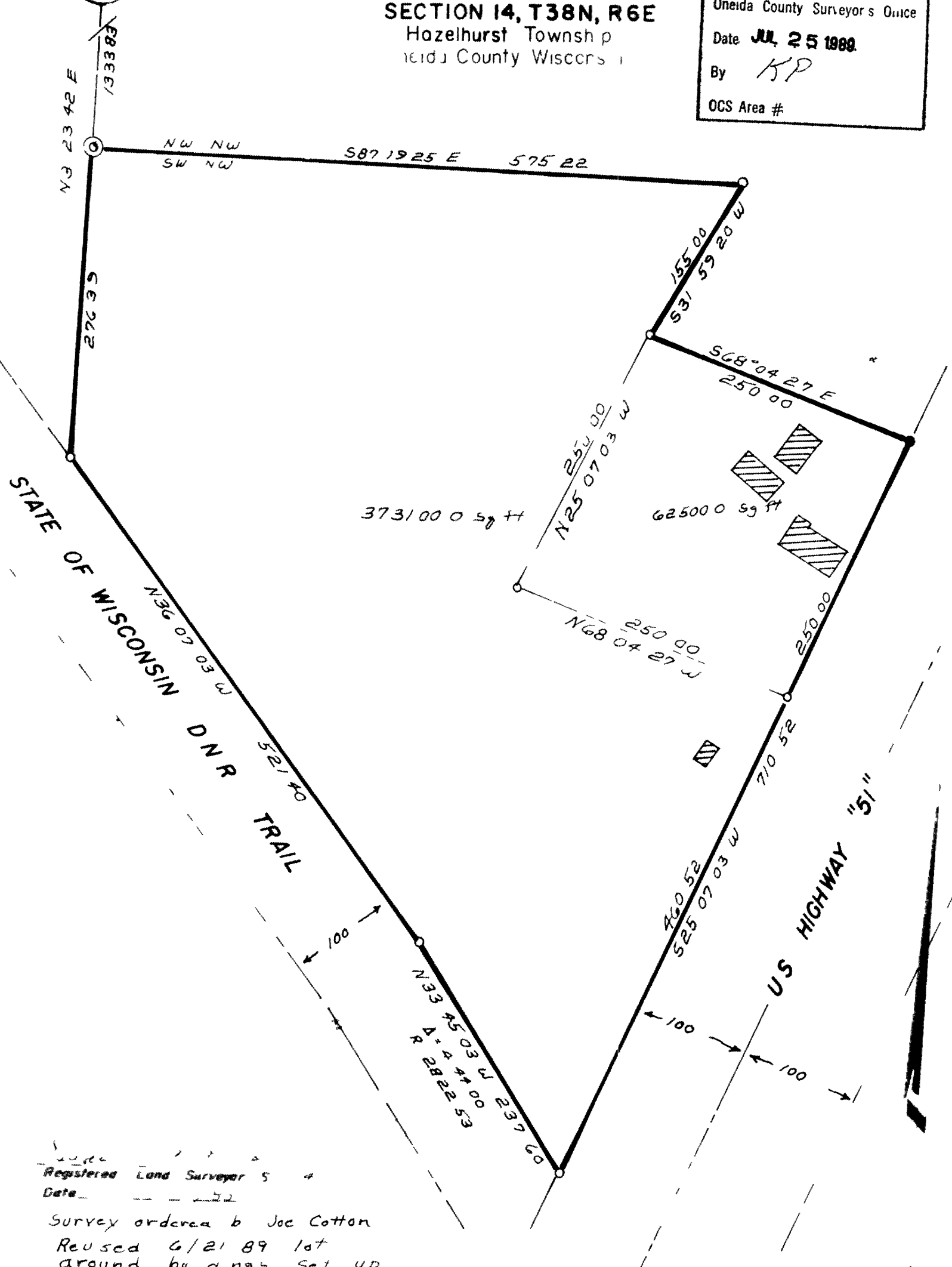


L1 032
SECTION 14
CORNER

Brass capped
iron pipe

Part of the
SW 1/4 of the NW 1/4
SECTION 14, T38N, R6E
Hazelhurst Townshp
Oneida County Wisconsin

RECEIVED & FILED # **L1 032**
Oneida County Surveyor's Office
Date **JUL 25 1989**
By *KP*
OCS Area #



3731 00 0 59 ft

62500 0 59 ft

Survey ordered by Joe Cotton
Reused 6/21 89 lot
around by a 1995 set up

LEGEND
O Iron pipe set
▨ Existing building



L1 032