

11042

0-1/2" iron pipe
• • • • •

Scale 1" = 100'

September, 1965
Revised February, 1967
June, 1967

GOV'T. LOT 1
SECTION 18, T36N R9E
Oneida County, Wis.



Northwoods Surveyors

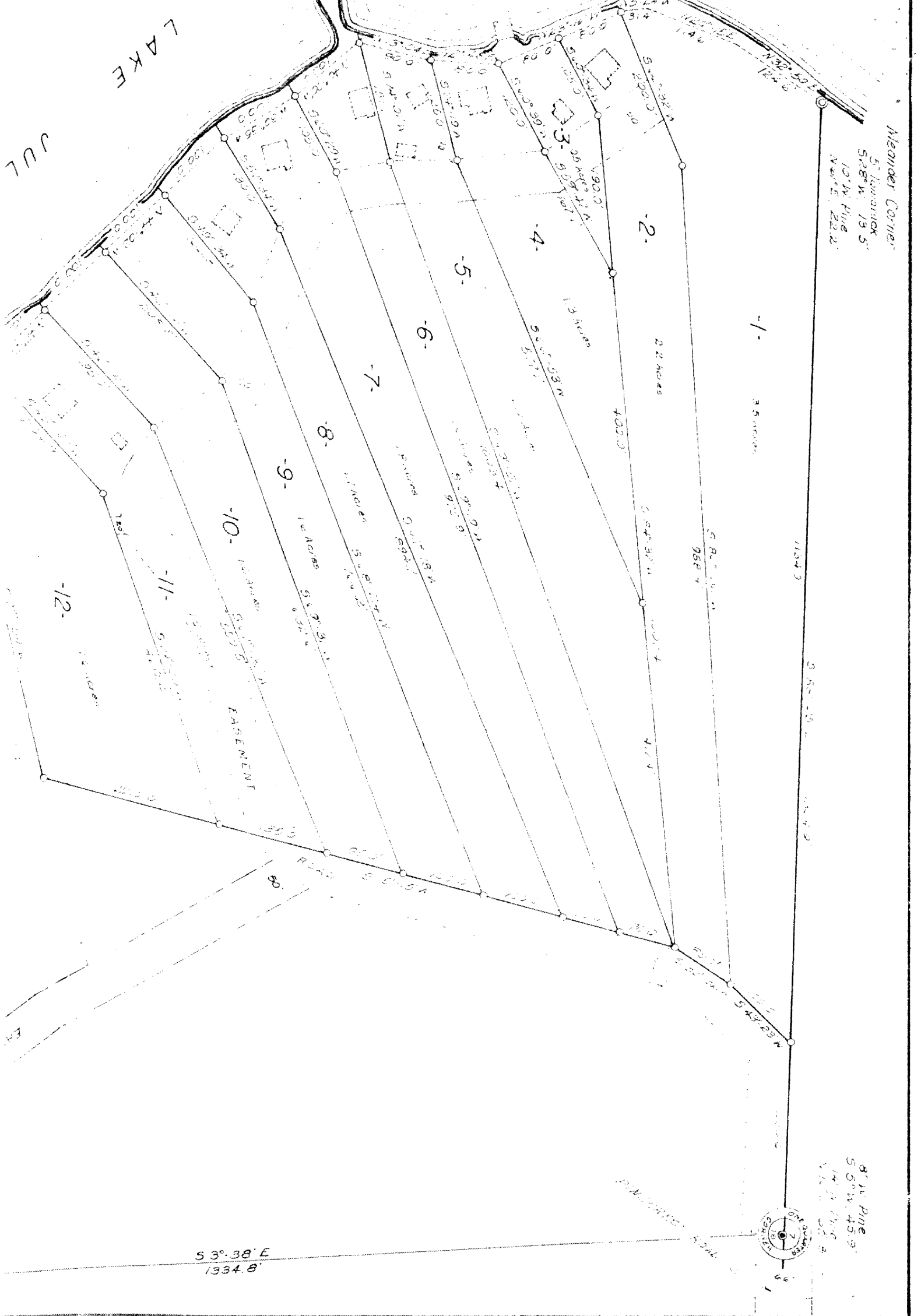
See U. 273 Reg. of Records
P. 155
For Full map

50'

RECEIVED & FILED # 11042
Oneida County Surveyor's Office
Date AUG 1 1989
By: [Signature]
OCS Area #

11042

11042



LAKELAKE
DUL

Meander Corner
 S 74° 13' 5"
 528' W. 13.5'
 10' W. Pine
 N 81° 5' 22.2"

-1- 3.5 acres

-2- 2.2 acres

-3- 1.5 acres

-4- 1.5 acres

-5- 1.5 acres

-6- 1.5 acres

-7- 1.5 acres

-8- 1.5 acres

-9- 1.5 acres

-10- 1.5 acres

-11- 1.5 acres

-12- 1.5 acres

S 3° 38' E
 1334.6'

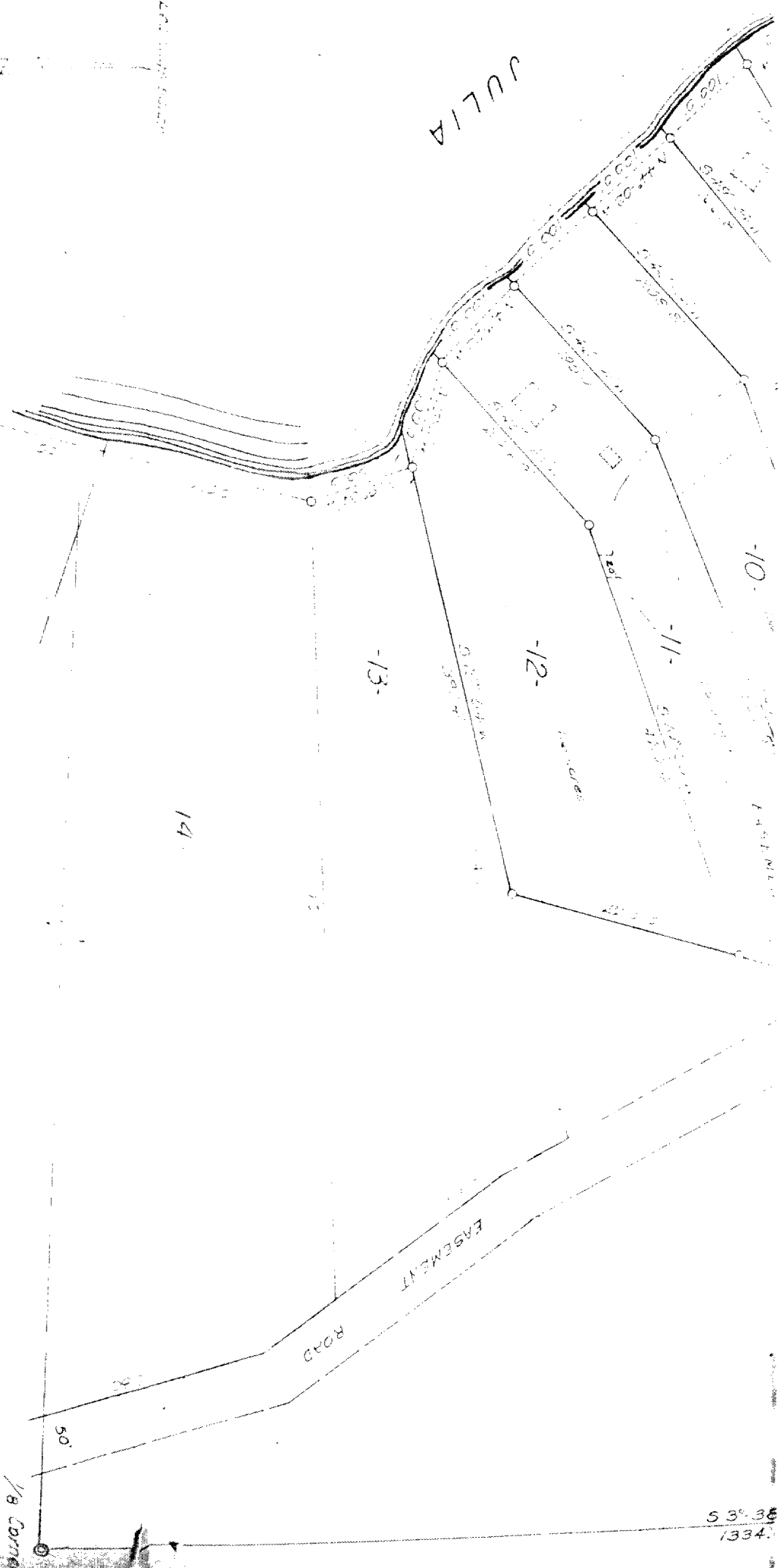


8" W. Pine
 S 60° W. 45.9'
 14' W. Pine
 N 71° 15' 22.2"

L I O 4

LAKE

JULIA

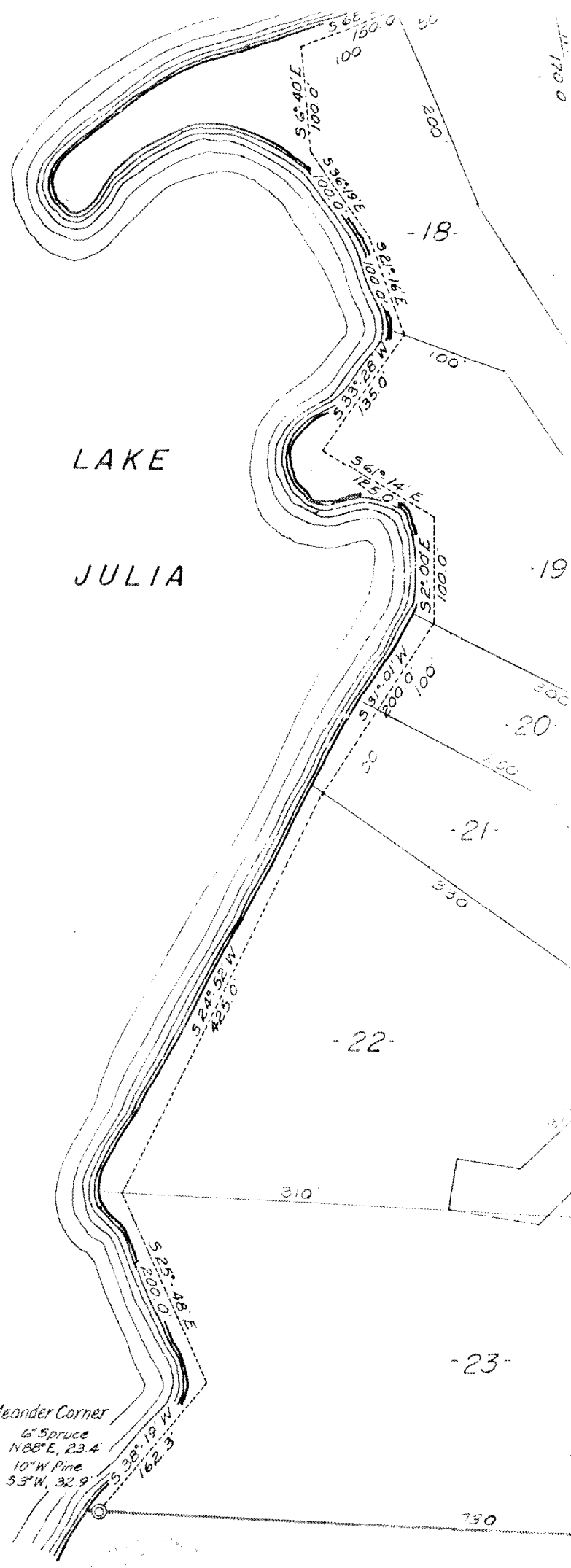


GOV'T. LOT 1
SECTION 18, T 36N R 9E

Oneida County, Wis.

042

53° 36'
1334'



LAKE

JULIA

Meander Corner

6" Spruce
 N88°E, 23.4'
 10" W Pine
 53°W, 32.9'

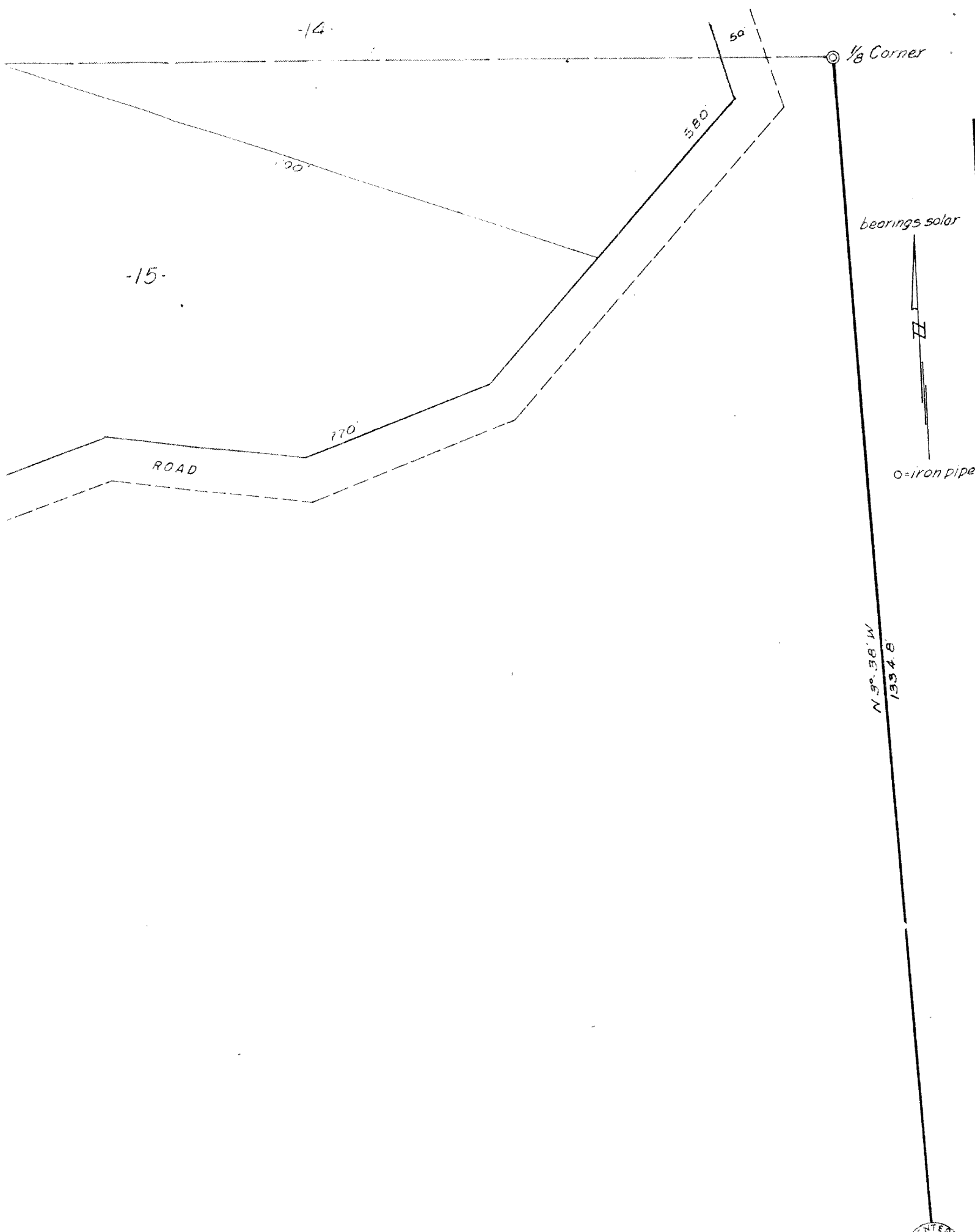
Scale 1" = 100'

February, 1967

Revised June, 1967

L1042

X93 155



389°-08' E
1940.1'

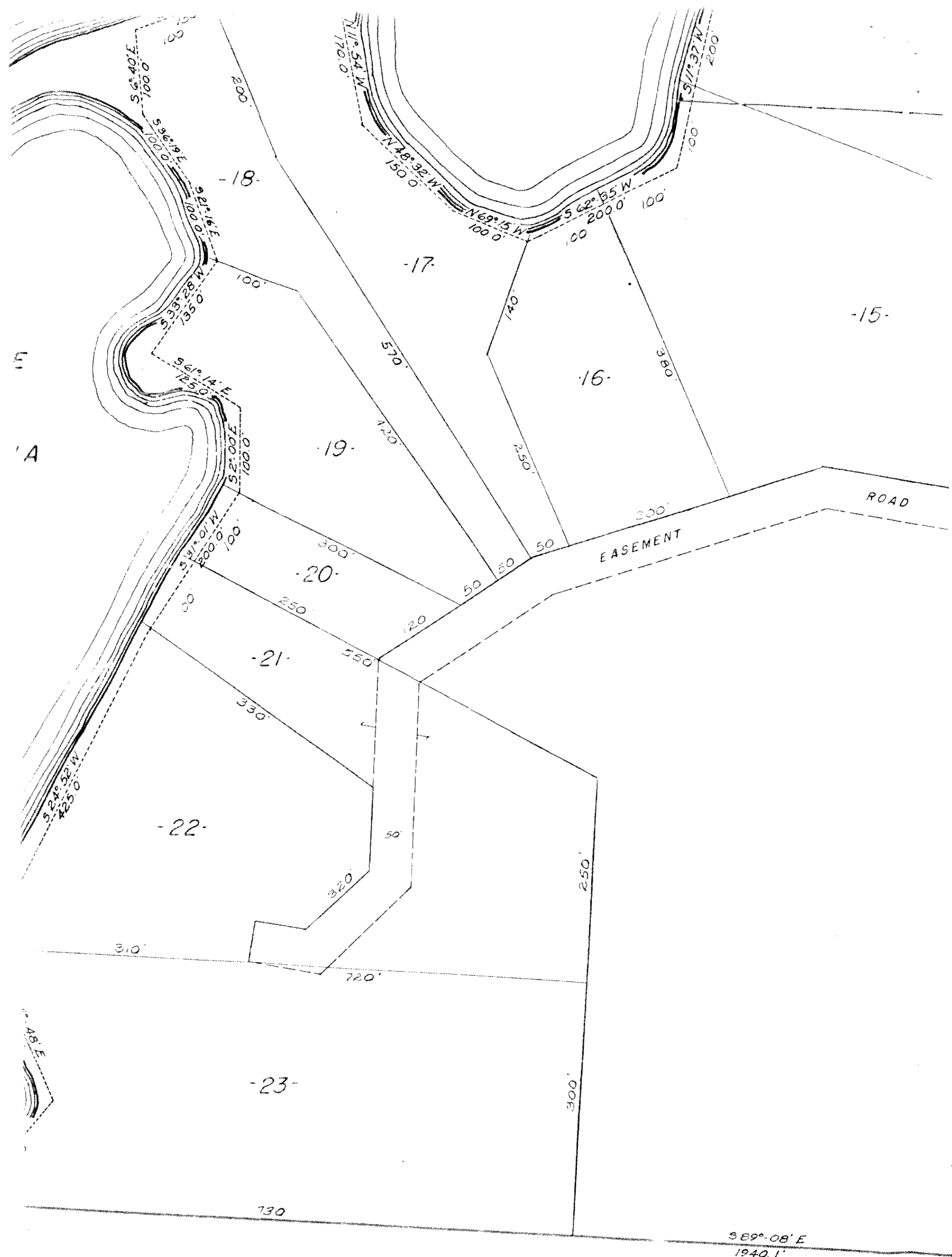
1/4 T. LOT 2
18, T36N, R9E
neida County, Wis.

Northwoods Surveyors
James R. Smith
Land Surveyor

7" Hemlock
5.48'E, 35.3
12" Maple
N 49°E, 28.



L1042



Scale 1"=100'
 February, 1967
 Revised June, 1967

GOV'T. LOT 2
 SECTION 18, T36N, R9
 Oneida County, Wis.

L1042