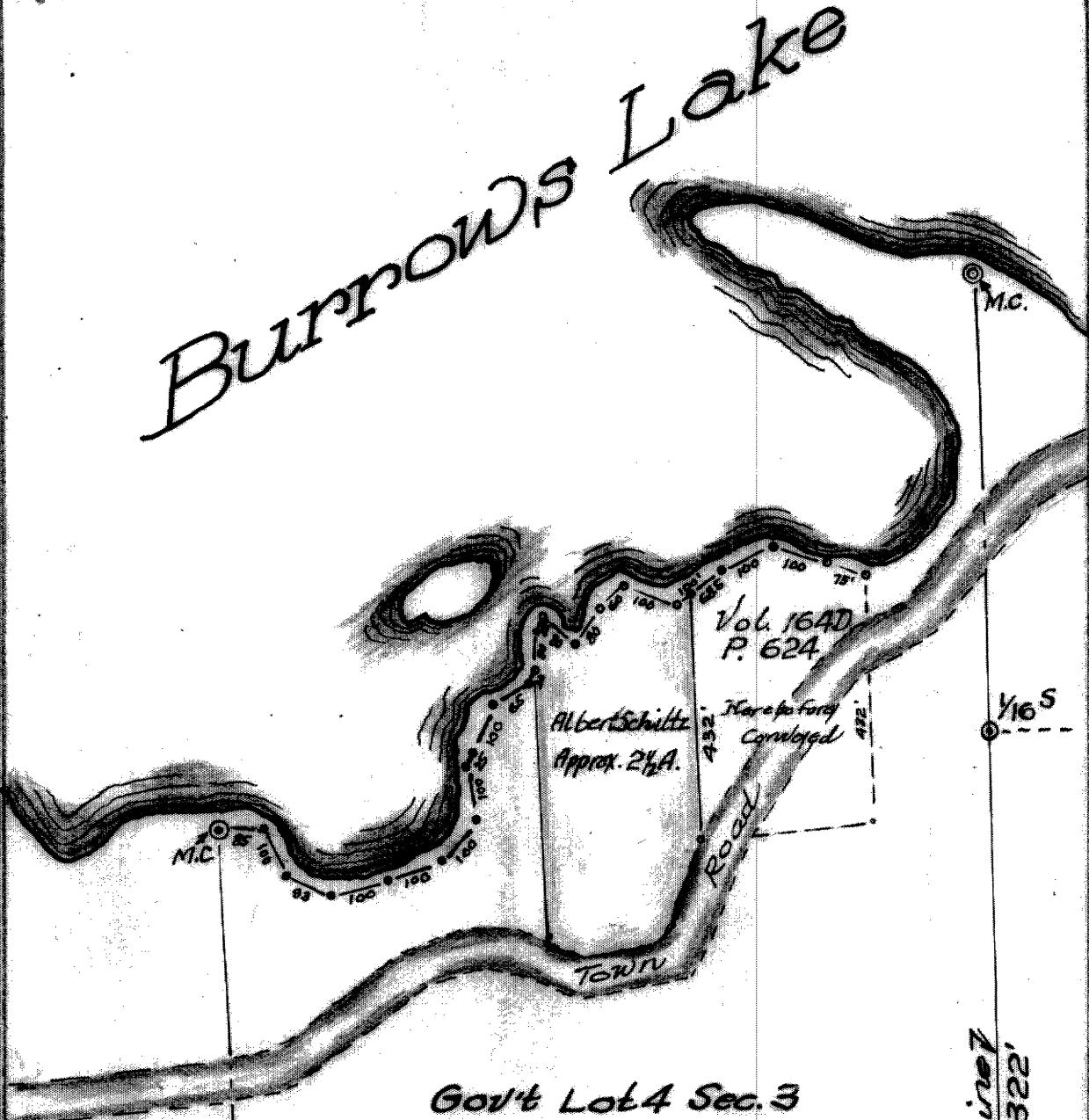


L1047

L1047

Albert Schiltz parcel in Gov't Lot 4 Sec. 3
Township 36 North of Range 5 East
Oneida County, Wisconsin

BURROWS Lake



Gov't Lot 4 Sec. 3
Township 36 N. of R. 5 E.
Effie Schiltz.



Scale: 1" = 300'

Section Line 7
1238.4'
4
3
9 10

RECEIVED & FILED **L1047**
 Oneida County Surveyor's Office
 Date **AUG. 10 1988**
 By **K.P.**
 OCS Area #.....
 1340

Section Line 8

Eighth Line 7
1322'

1/16 S

L1047

1/8 S