

38-7

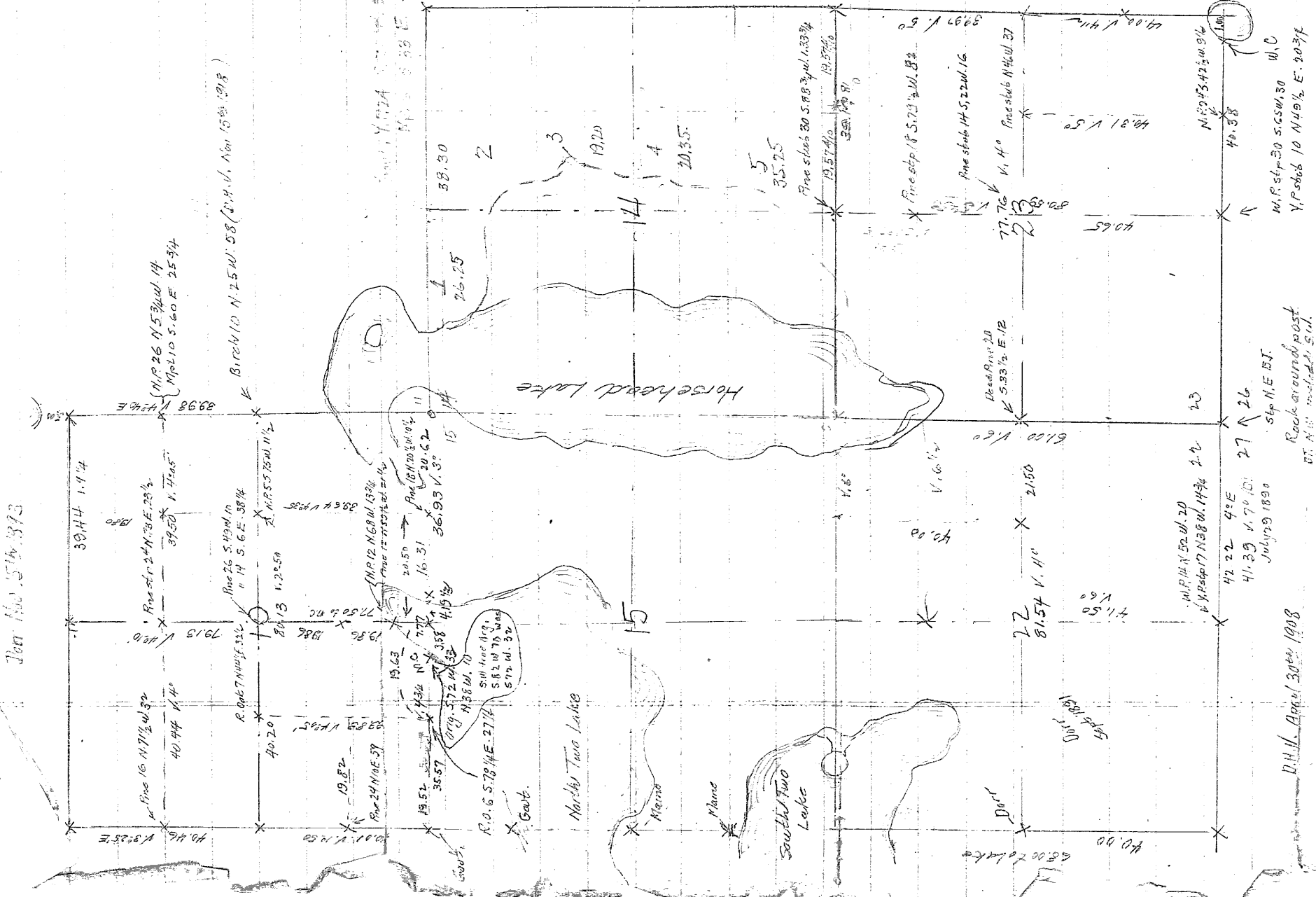
Thin for Survey of Town of Lake Umbagog

Town Map 574-373

RECEIVED & FILED #.....
 Oneida County Surveyor's Office
 Date..... **AUG. 11 1989**
 By.....
 OCS Area #.....

L1052

L1052



Good Notes

West Cor bed 15.80.22
 150 Leave Lake to set N.C. } Birch 12 N.50 E. 8 } same 328
 Town 8 S.45 W. 9 } same 328

40.10 Set 1/4 site } Tam 14 S.40 E. 8 } same 338
 Map 6 N.28 E. 7 } same 338

66.50 Lake to set N.C. } Map 8 S.57 W. 6 } same 338
 Y.P. 8 N.25 E. 9 } same 338

80.00 Sec Cor. in Lake

Cor to 22, 23, 26, 27 } W.P. 10 N.66 E. 22
 } Spr @ N 35 W. 20

West Cor bed 14 @ 23 V. 67 1/2 E. (Eastman?)
 40.05 Set 1/4 site } Y.P. 11 S.74 W. 1.35
 } Y.P. 12 N.70 W. 1.65

41.50 Intersect Inho to set N.C. } W.P. 12 N.7 E. 52
 } Y.P. 15 S.12 E. 46

80.10 Sec Cor in Lake

Good Notes

North bed 72.85 Var 62 E
 76.50 over Lake to set N.C. } W.P. 9 N.82 W. 5
 } W.P. 12 N.82 W. 5

80.00 Cor to Sec 10, 11, 14, 15 } W.P. 30 N.86 E. 50
 } Birch - 56 1/2 E. 89

West Cor. bed 10 @ 15 Var 62 E.
 36.18 Lake to set N.C. } W.P. 10 N.45 E. 65
 } W.P. 10 S.37 E. 53

44.00 over Lake to set N.C. } Y.P. 24 S.82 W. 70
 } W.P. 10 S.88 E. 33

North bed 72 @ 23 New 60 W E
 40.00 Set 1/4 site } Map 6 S.28 E. 17
 } Map 6 S.89 W. 20

60.33 Intersect Lake to set N.C. } Birch 7 S.32 E. 8
 } Tam 6 S.47 W. 19

80.00 Sec. Cor in Lake

L1052