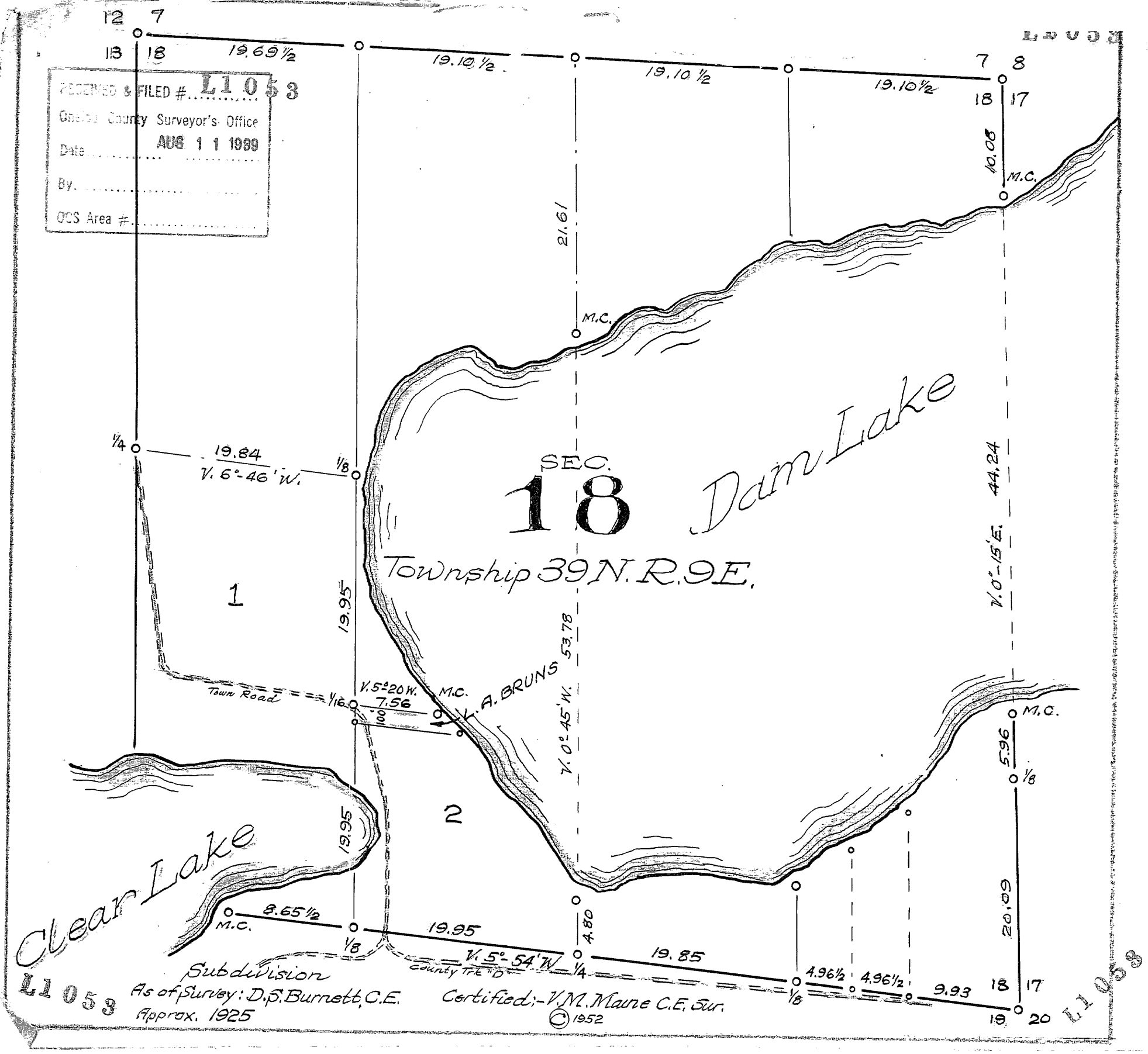


RECEIVED & FILED # **L1053**  
 Ocas County Surveyor's Office  
 Date **AUG 11 1989**  
 By.....  
 OCS Area #.....



SEC. **18**  
 Township 39 N. R. 9 E.

**L1053** Subdivision  
 As of Survey: D.S. Burnett, C.E. Certified: V.M. Maine C.E. Sur.  
 Approx. 1925 © 1952

**L1053**