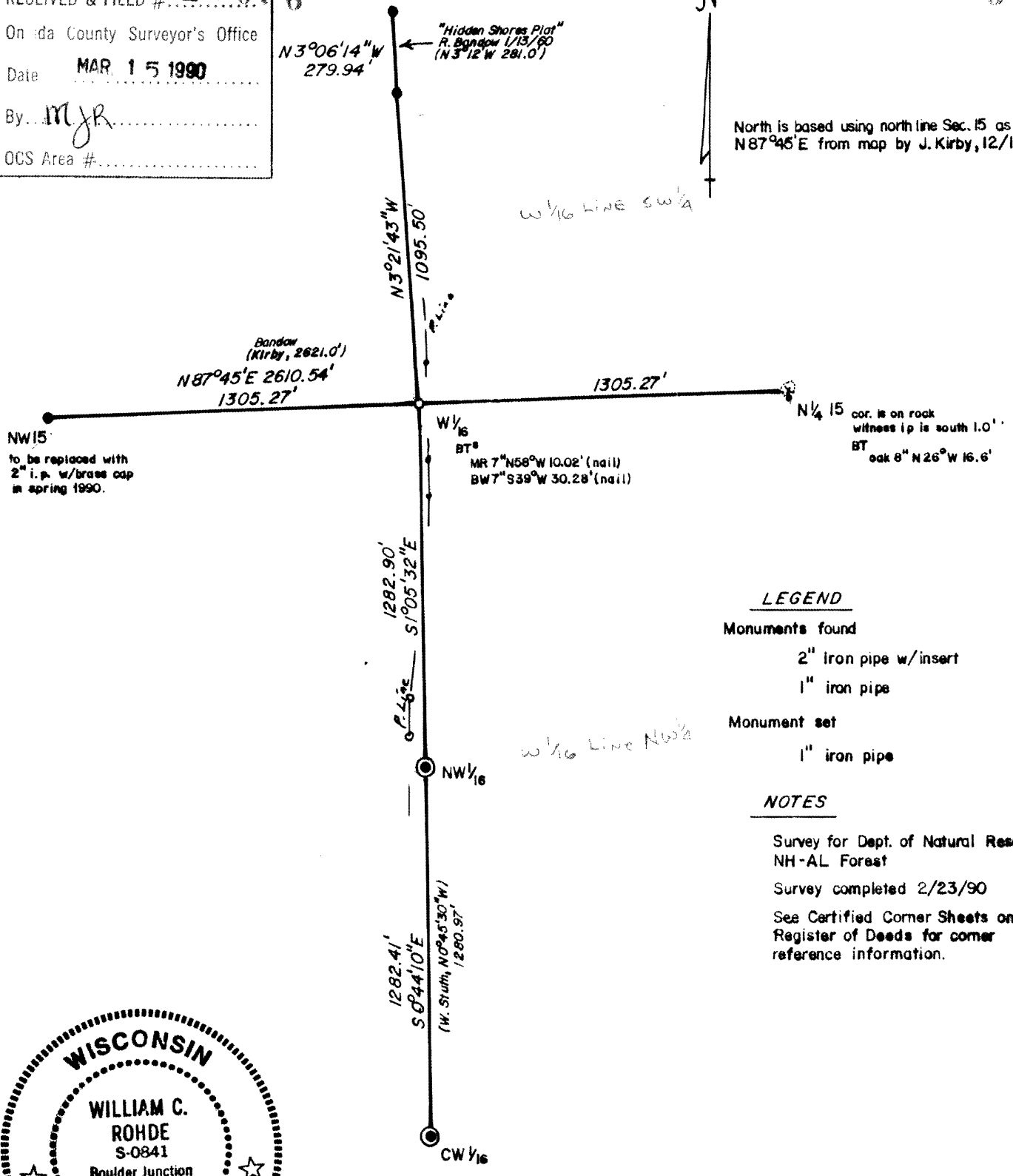


RECEIVED & FILED # **L1076**
 Onida County Surveyor's Office
 Date **MAR 15 1990**
 By *MJR*
 OCS Area #

L1076



North is based using north line Sec. 15 as N87°45'E from map by J. Kirby, 12/15/66

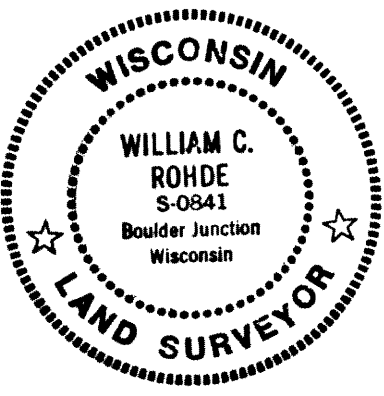


LEGEND

- Monuments found
- 2" iron pipe w/insert
 - 1" iron pipe
- Monument set
- 1" iron pipe

NOTES

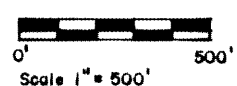
Survey for Dept. of Natural Resources
 NH-AL Forest
 Survey completed 2/23/90
 See Certified Corner Sheets on file at Register of Deeds for corner reference information.



I, William Rohde, certify this map to be correct to the best of my knowledge and belief.

William Rohde 3-13-90

T38N, R8E, Onida Co.
 Sec. 10, 15 ; partial



Dr. by M. Seymour 2/13/90

L1076

L1076