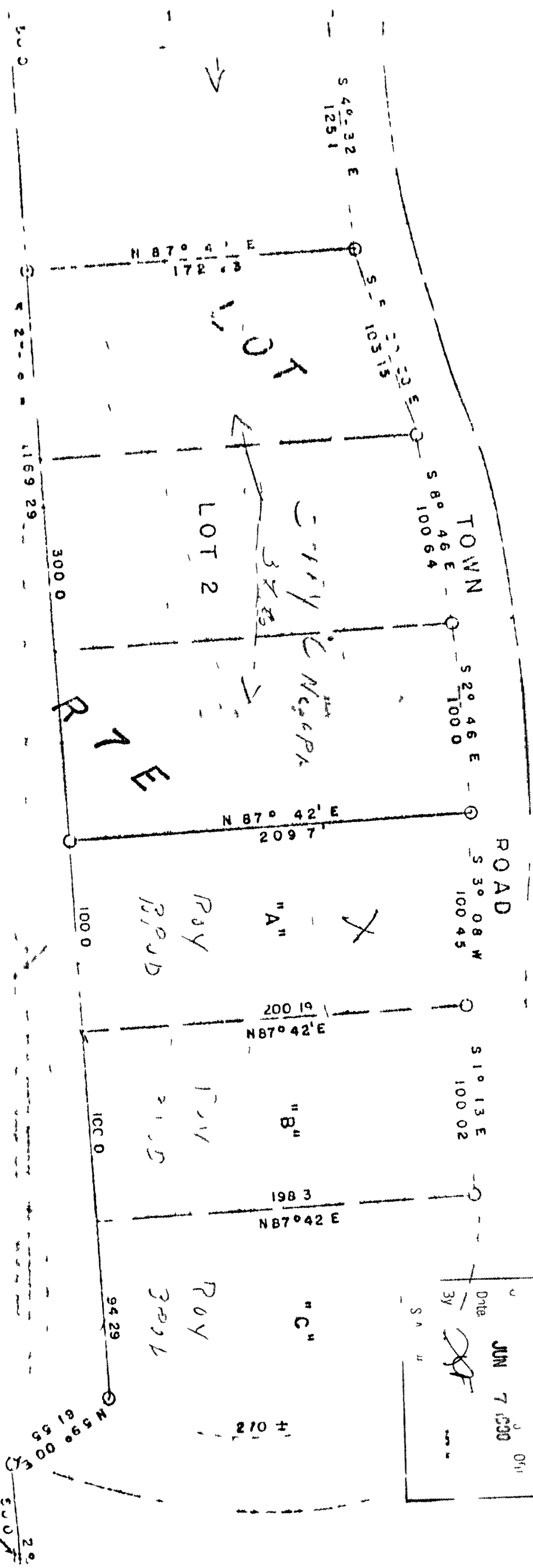


533

139 N'



JUN 7 1930
 Date
 S.A.
 L1083

N 1/2 COR 1
 GLENCO

11003
S T H

R/W LINE

Weyerker

325.0

N 87° 42' E
198.95

H 1114 N
Schauer
27.5

LOT 1

Volume - 16
p. 453

S 11° 53' W
128.93

S 4° 32' E
125.1

450.0

N 87° 42' E
172.23

W
COY

LOT 2

Vol 1316
Page 1

S 30° 20' E
103.15

S 8° 46' E
100.64

TOWN

211.6

92.3

300.0

60

39 N

11003