

RECEIVED & FILED #

On d 1 C 11/ Survey 0 line

Date JUN 7 1990

By [Signature]

OCS Area #

1/4 CORNER T 39 N R 11 E
GOV LOT 1 SEC 8
GOV LOT 1 SEC 17

331.6 SOUTH AND 548.1 EAST OF QUARTER CORNER

TRUE BEARING

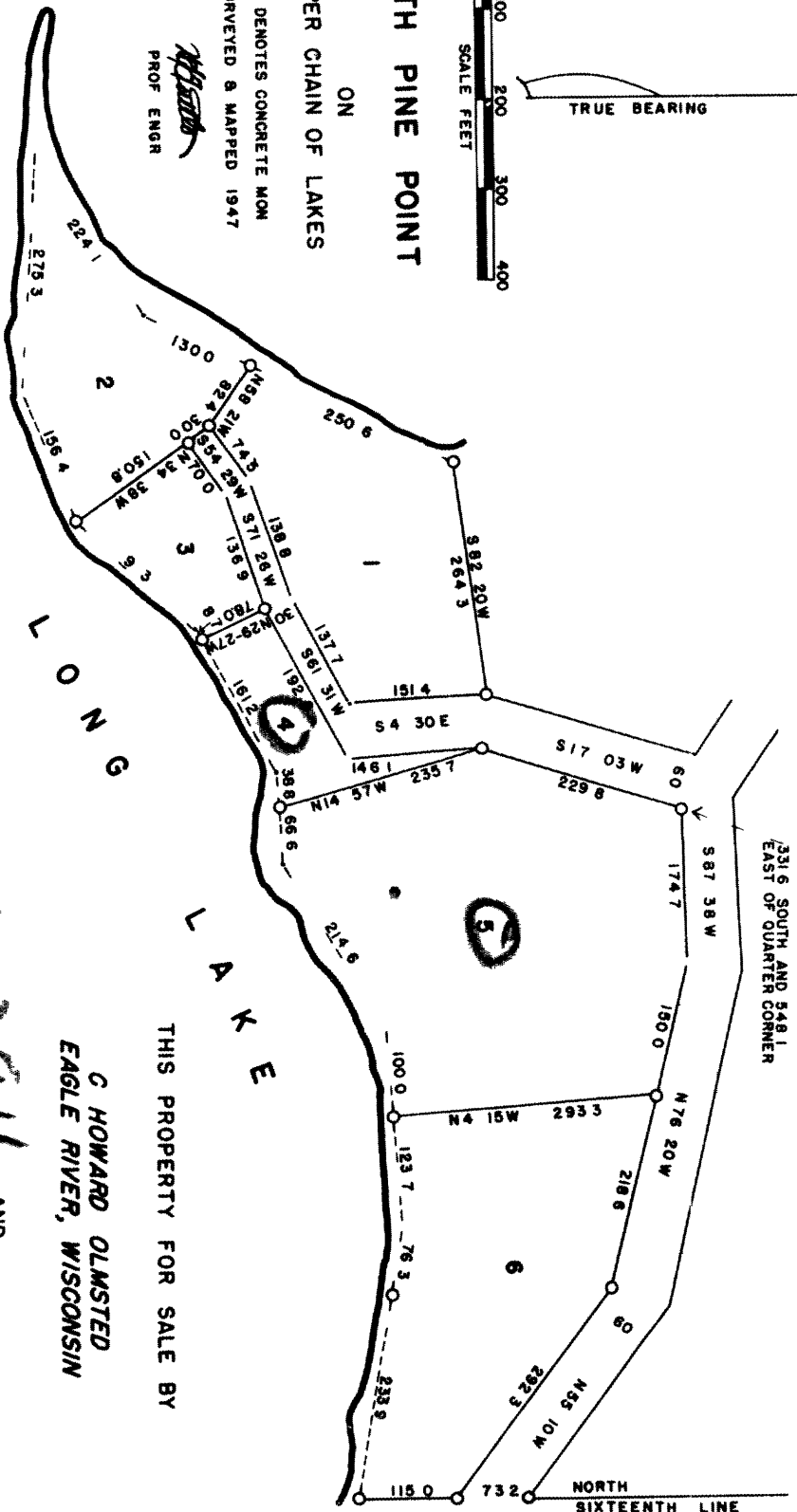


SOUTH PINE POINT

UPPER CHAIN OF LAKES

O DENOTES CONCRETE MON SURVEYED & MAPPED 1947

[Signature] PROF ENGR



THIS PROPERTY FOR SALE BY

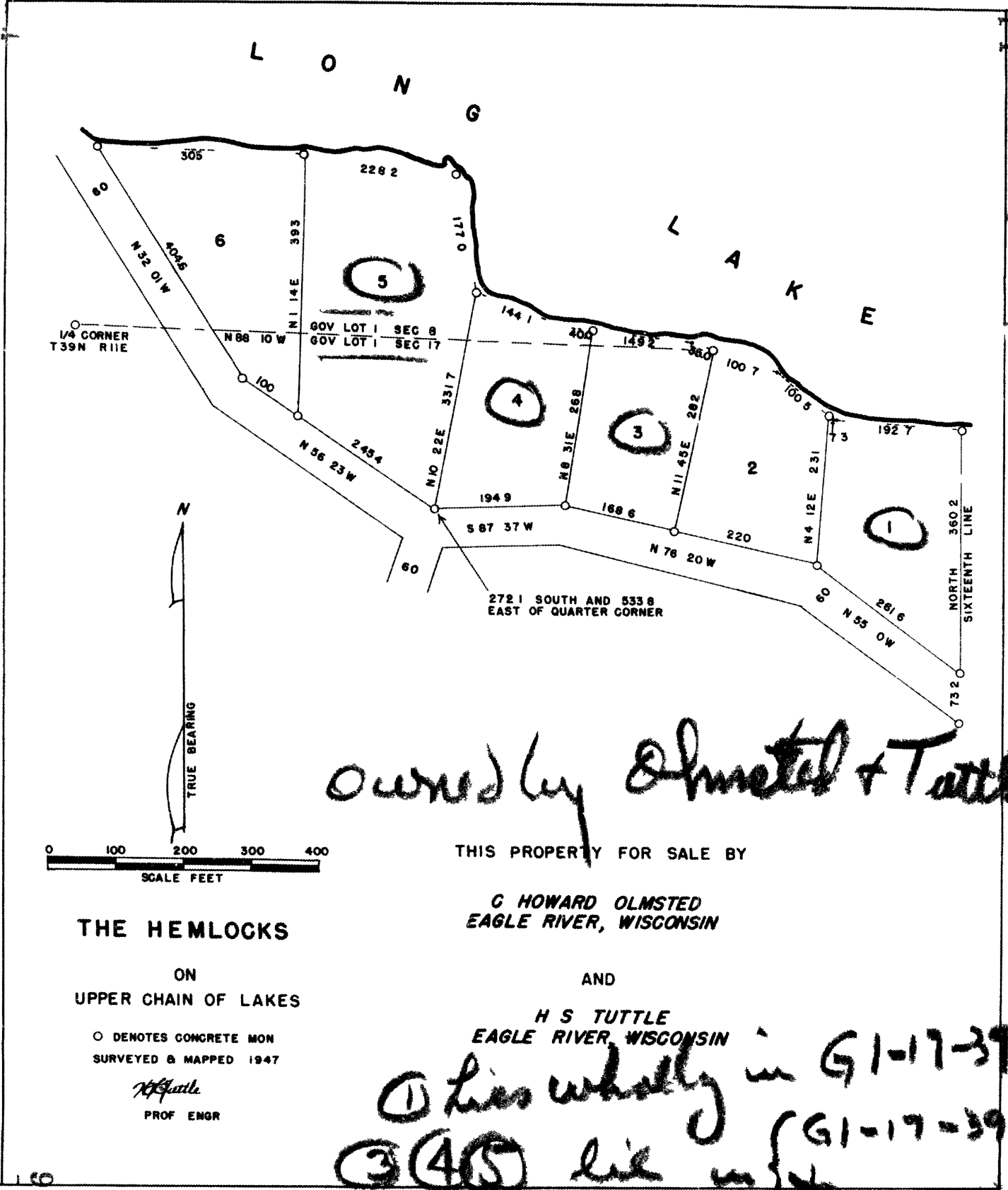
C HOWARD OLMSTED
EAGLE RIVER, WISCONSIN

H S TUTTLE
EAGLE RIVER WISCONSIN

Wholesale IN GOV LOT 1-17-3911 AND

4 COUNTESS C. HOWARD OLMSTED
5 " C. HOWARD OLMSTED + H. S. TUTTLE

L1086



Owned by Olmsted & Tuttle

THIS PROPERTY FOR SALE BY

C HOWARD OLMSTED
EAGLE RIVER, WISCONSIN

AND

H S TUTTLE
EAGLE RIVER, WISCONSIN

THE HEMLOCKS

ON
UPPER CHAIN OF LAKES

○ DENOTES CONCRETE MON
SURVEYED & MAPPED 1947

H S Tuttle
PROF ENGR

① lies wholly in G1-17-39-11
③ ④ ⑤ lie in G1-17-39-11
G1-8-39-11

L1086

L1086