



Stock No 26273

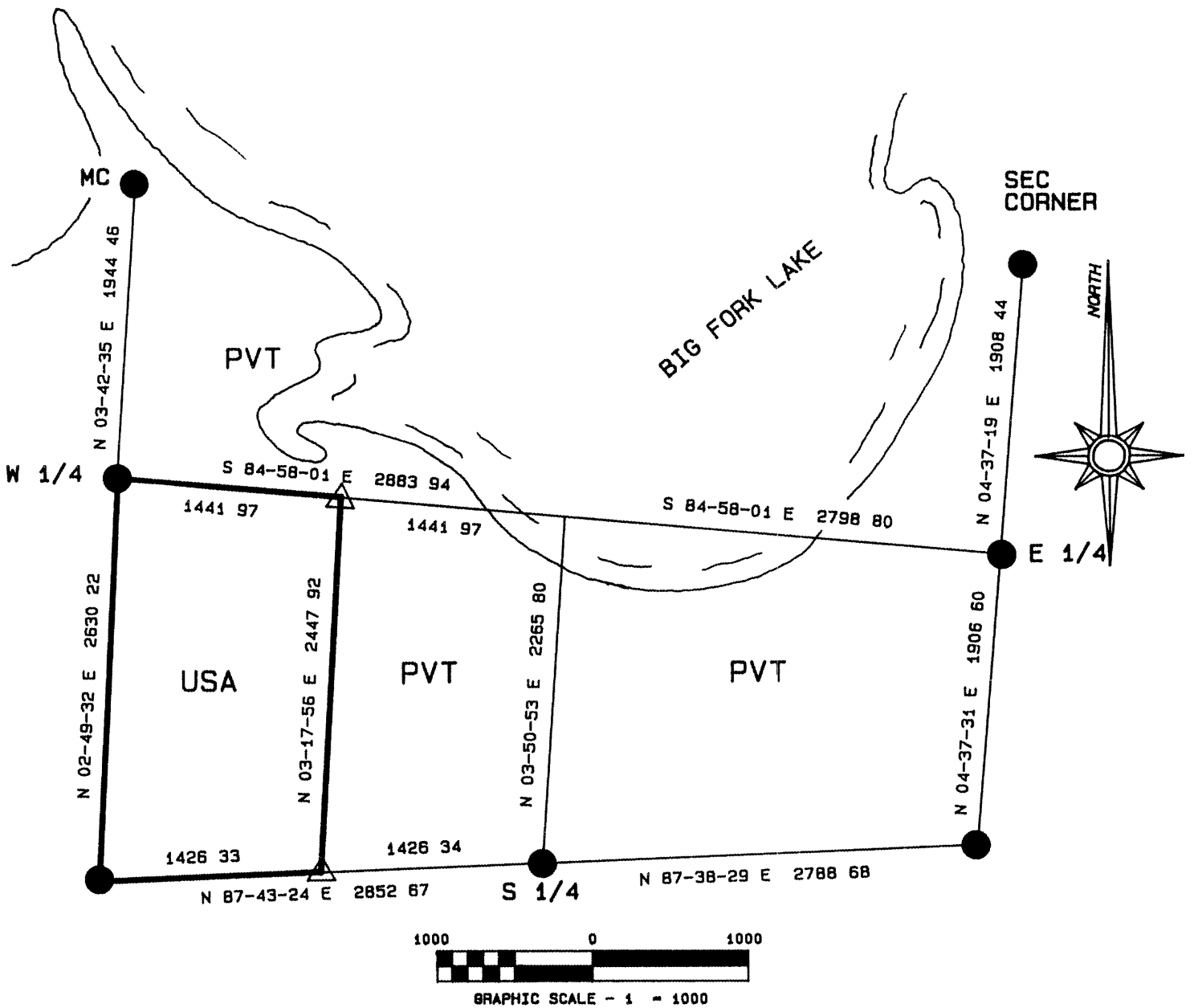
U60

# PLAT OF SURVEY FOR CERTIFIED LAND CORNER RESTORATION AND ESTABLISHMENT

BEING THE CORNERS FOR THE W 1/2 OF THE SW 1/4  
AND THE CORNERS ON THE PERIMETER OF THE SECTION

## SECTION 34 TOWNSHIP 39 NORTH RANGE 11 EAST

COUNTY OF ONEIDA STATE OF WISCONSIN



### LEGEND

- 1 INCH DIAMETER ALUMINUM PIPE MONUMENT 36 INCHES LONG WITH AN ALUMINUM CAP
- 6 INCH DIAMETER CONCRETE MONUMENT FROM THE 1941 DEPENDENT RESURVEY
- BOUNDARY LINE MARKED TO FOREST SERVICE STANDARD

RECEIVED & FILED #	LI 09
On da County Surveyor's Office	
Date	JUL 13 1990
By	RF
OCS Area #	

LI 09 0

U60 17

Stock No 26273

T39N R11E, SECTION 34

page 2 of 4

SURVEY NOTES

This survey was made by the U S Department of Agriculture, Forest Service for the purpose of recovering, restoring, establishing marking, and perpetuating the corners and boundary lines of U S Government land on the perimeter and within Section 34, Township 39 North Range 11 East Fourth Principal Meridian, Oneida County, State of Wisconsin as shown on the Plat map herewith

The U S Government land within Section 34 was acquired in 1935

The original government subdivision of this township was made in 1859

The bearings between corner positions are true bearings as determined by reference to solar observations The accuracy of this survey exceeds the State requirement for closure of 1 in 3,000 Corners recovered or established by this survey are marked as described in the map legend Each monumented corner is referenced to blazed scribed, painted and tagged bearing trees Tie bearings are magnetic, and not corrected for declination

The bearing of the North-Center line is a weighted mean of the West and East section lines

The field notes and a copy of the Plat of survey are on file in the Forest Service Supervisor's Office at Rhinelander, Wisconsin

CORNERS RECOVERED AND RESTORED1 Northeast Section Corner

Corner position recovered as restored by Milo Stefan in 1988

Corner references recovered

White Pine	12"	S64 E	19 6, feet
Tamarack	5"	S51 W	32 7, feet
Tamarack	6"	N67 W	20 21 feet
Tamarack	5"	N24 W	38 1, feet
Steel sign post		North	1 20 feet
Steel sign post		East	1 40 feet

2 East Quarter Corner

Corner position recovered as restored by Milo Stefan in 1988

Corner references recovered

Hemlock	8"	N33°E	26 14 feet
Hemlock	18"	S43°E	15 8, feet
S Maple	8"	S53 W	106 38 feet
Hemlock	13	N63 W	82 1, feet
Steel sign post		East	1 70 feet

3 Southeast Section Corner

Corner position recovered as restored by Milo Stefan in 1988

Corner references recovered

Cedar	8"	N20 E	20 10 feet
Hemlock	7"	S71 E	16 10 feet
Hemlock	12"	S13 E	34 60 feet
Cedar	5"	S38 W	35 50 feet
R Pine	9"	N37 W	16 80 feet
Wood sign post		S28 E	90 feet

11090



Stock No 26273

T39N R11E - SECTION 34

page 3 of 4

4 South Quarter Corner

Corner position recovered as restored by the 1941 Dependent Resurvey

Corner references recovered

Witness Monument 6" diameter concrete monument with brass cap  
 South 40 links distance from corner position

References to the Witness Monument

Norway stump	N65 W	76 56 feet
White Pine (gone)		

New Corner references

Power Pole #3811-3W87	N44 E	5 53 feet
Oak 16"	N13 W	40 14 feet (not marked)

No sign post placed here

5 Southwest Section Corner

Corner position recovered as restored by the 1941 Dependent Resurvey

Corner references recovered

R Pine 10"	N83 E	2 97 feet
R Pine 11"	S26°E	54 78 feet
R Pine 14"	S47 E	25 08 feet
R Pine 7"	N46°W	5 61 feet

No sign post placed here

6 West Quarter Corner

Corner position recovered as restored by the 1941 Dependent Resurvey

Corner references recovered

R Pine 14"	S50 E	47 52 feet
Oak 16"	S85 W	87 12 feet
Wood sign post	North	1 00 feet

7 Meander Corner on SW shore of Big Fork Lake

Corner position recovered as restored by the 1941 Dependent Resurvey

Corner references recovered

Maple 10"	S43°W	8 81 feet
-----------	-------	-----------

New Corner references

Power Pole	S23 E	21 72 feet
------------	-------	------------

No sign post placed here

CORNERS ESTABLISHED1 Center-West Sixteenth Corner

Corner position established at midpoint and on line between the West Quarter Corner and the Center Quarter Corner position

Corner references

Maple 9"	S10 W	6 35 feet
Maple 7"	N85 W	17 67 feet

No sign post placed here

2 West Sixteenth Corner between section 34 T39N and section 3 T38N

Corner position established at midpoint and on line between the Southwest Section Corner and the South Quarter Corner

Corner references

W Pine 5"	S37 E	27 60 feet
W Pine 7"	S49 W	24 96 feet

No sign post placed here

06017

06017



Stock No 26273

T39N R11E SECTION 34

page 4 of 4

SURVEYOR'S AFFIDAVIT

State of Wisconsin)  
County of Oneida )

I William B Cochrane Land Surveyor, U S Forest Service and a registered Land Surveyor in the State of Wisconsin, hereby certify that I have surveyed and subdivided Section 34 Township 39 North, Range 11 East Fourth Principal Meridian, State of Wisconsin

The plat map and survey notes herewith are a correct representation of the land surveyed and divided I have surveyed and subdivided said section in accordance with the rules for the survey of the public lands and with the statutes of the State of Wisconsin



*William B Cochrane*

Land Surveyor, U S D A Forest Service  
R L S State of Wisconsin  
Certificate S-1107

Date of Survey 1989

Survey requested by

*Pam Ford*  
District Ranger

*3/1/90*

Date

L  
1  
7  
7  
1

L  
1  
0  
9  
0