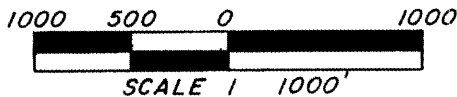
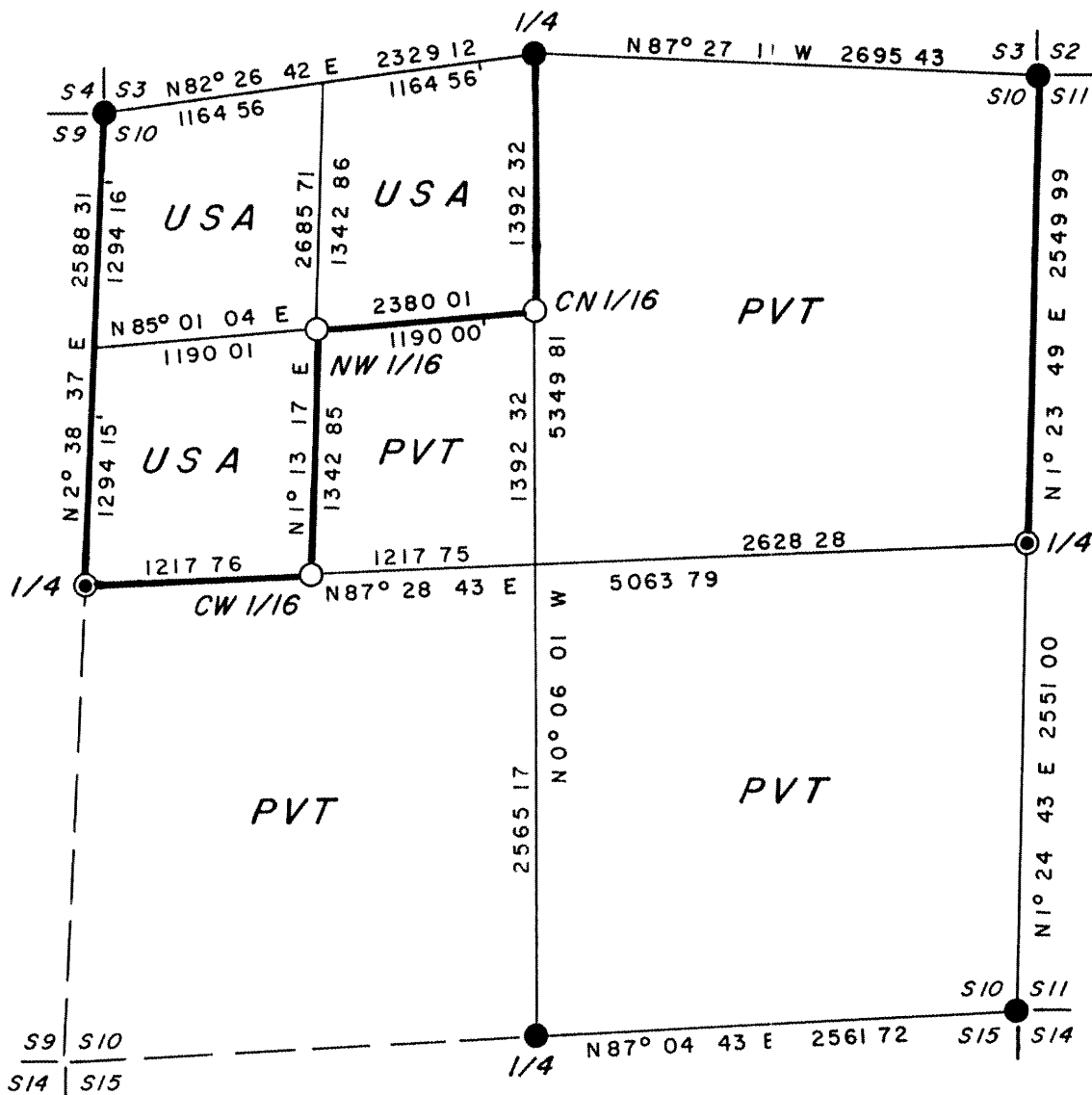


PLAT OF SURVEY U S GOVERNMENT LAND

BEING THE W 1/2 OF THE NW 1/4 & THE NE 1/4 OF THE
NW 1/4, SECTION 10, TOWNSHIP 39 NORTH, RANGE 11
EAST, FOURTH PRINCIPAL MERIDIAN, ONEIDA COUNTY,
WISCONSIN



N



—LEGEND—

- 6 DIA G L O CONCRETE MONUMENT BRASS CAP
- ⊙ 2 DIA G L O IRON PIPE BRASS CAP MONUMENT
- 1 DIA .36 ALUMINUM MONUMENT SET THIS SURVEY
- BOUNDARY U GOVERNMENT LAND
- - - UNSURVEYED LINES

CONVERSION FACTORS
FEET TO METERS 0.304801
METERS TO FEET 3.280833

RECEIVED & FILED #

Oneida County Surveyors Office

DATE JUL 16 1980

By *XF*

OCS Area #

SURVEY NOTES

This survey was made by Soder Surveying pursuant to United States Department of Agriculture Forest Service Contract #53-56A6-9-00289 Cadastral Survey, for the purpose of marking, recovering, restoring establishing and perpetuating the corners and boundary lines of the U S Government land on the perimeter and within Section 10 Township 39 North Range 11 East Fourth Principal Meridian Oneida County Wisconsin as shown on plat herewith

The original Government subdivision survey of this Township was made by William E Daugherty in 1859

A dependent resurvey of the township was executed under the direction of the General Land office in 1941

The corner positions recovered, restored and established by this survey are marked by the monument described in the map legend

The corner positions established were located to an accuracy of 1 part in 3000

The bearings between corner positions were established by tying to the survey of Section 15, T39N R11E by John Fisher for the U S Department of Agriculture Forest Service in 1984 The bearings in Section 15 by John Fisher were determined by solar observation

The field notes of this survey and a copy of this plat are on file in the Forest Supervisor s office in Rhinelander WI

CORNERS RECOVERLD

1 Corner to Sections 10 3, 2 & 11

Corner is monumented by a 6 dia concrete monument with General Land Office brass cap stamped to identify corner

Corner References

Nail in N Pine	9	S52°W	37 66 feet
Nail in Maple	8	N72°E	7 07 feet
Nail in W Pine	8	S87°W	43 36 feet
Nail in W Pine	36	S1°E	55 04 feet
Steel Sign Post		Northeast	1 0 feet

2 Corner to Sections 10 & 11

Corner is monumented by a 2 dia iron pipe with General Land Office brass cap stamped to identify corner

Corner References

Nail in Tamarack	11	N69°E	9 87 feet
Nail in Tamarack	7	N49°W	37 69 feet
Nail in Tamarack	6	S55°W	35 86 feet
Nail in Tamarack	9	S3°E	58 21 feet
Steel Sign Post		Northeast	1 0 feet

3 Corner to sections 10, 11, 14 & 15

Corner is monumented by a 6 dia concrete monument with General Land Office brass cap Stamped to identify corner
Corner restored by J H Fisher in 1934

Corner References

Nail in N Pine	6	S44°W	29 72 feet
Nail in N Pine	10	S87°W	28 70 feet
Nail in N Pine	8	N62°W	11 40 feet
Nail in N Pine	9	N23°L	27 10 feet
Steel Sign Post		Last	1 20 feet

4 Corner to Sections 10 & 15

Corner is monumented by a 6 dia concrete monument with General Land Office brass cap stamped to identify corner
Corner restored by J H Fisher in 1934

Corner References

Nail in Maple	11	N4°E	26 20 feet
Nail in Maple	14	S67°L	25 90 feet
Nail in Maple	10	S9°W	26 80 feet
Nail in Maple	7	N38°W	30 80 feet
Wood Sign Post		Southeast	1 0 feet

5 Corner to Sections 10 & 9

Corner is monumented by a 2 dia iron pipe with General Land Office brass cap stamped to identify corner

Corner References

Nail in W Pine	14	S27°W	207 37 feet
Nail in Spruce	4	N45°E	95 94 feet
Nail in Spruce	7	S41°E	114 65 feet
Nail in Spruce	3	N71°W	98 54 feet
Steel Sign Post		Northwest	0 75 feet

6 Corner to Sections 10 9 4 & 3

Corner is monumented by a 6 dia concrete monument with General Land Office brass cap stamped to identify corner

Corner References

Nail in Tamarack	14	N26°E	41 06 feet
Nail in W Pine	15	S17°W	11 60 feet
Nail in Spruce	9	N7°W	30 50 feet
Nail in W Pine	13	N84°E	29 92 feet
Steel Sign Post		Northeast	1 0 feet

7 Corner to Sections 10 & 3

Corner is monumented by a 6 dia concrete monument with General Land Office brass cap stamped to identify corner

Corner References

Nail in Cedar	8	N4°E	16 31 feet
Nail in Cedar	5	S35°E	19 91 feet
Nail in Tamarack	7	S35°W	28 28 feet
Nail in Cedar	7	N70°W	8 06 feet
Steel Sign Post		Northeast	1 0 feet

CORNERS ESTABLISHED

1 Center West One-Sixteenth Corner to Section 10

Corner established at the midpoint and on line between the West One-Quarter Corner and the Center One-Quarter Corner of Section 10

Corner is a 1 dia aluminum pipe 3 feet long with an aluminum cap stamped to identify corner

Corner References

Nail in Maple	4	N33°W	4 01 feet
Nail in N Pine	6	S10°E	40 38 feet
Steel Sign Post		Northeast	0 60 feet

2 Northwest One-Sixteenth Corner to Section 10

Corner established at the intersection of the one-sixteenth lines connecting the one-sixteenth corners on the exterior of the NW $\frac{1}{4}$ of Section 10

Corner is monumented by a 1 dia aluminum pipe 3 feet long with an aluminum cap stamped to identify corner

Corner References

Nail in Maple	10	N54 $^{\circ}$ W	5 91 feet
Nail in Maple	7	S26 $^{\circ}$ E	18 97 feet
Steel Sign Post		Northwest	0 80 feet

3 Center North One-Sixteenth Corner to Section 10

Corner established at the midpoint and on line between the North One-Quarter Corner and the Center One-Quarter Corner of Section 10

Corner is a 1 dia aluminum pipe 3 feet long with an aluminum cap stamped to identify corner

Corner References

Nail in W Pine	20	S22 $^{\circ}$ E	21 74 feet
Nail in W Pine	16	S76 $^{\circ}$ W	36 54 feet
Steel Sign Post		Northwest	0 70 feet

SURVEYOR'S AFFIDAVIT

State of Wisconsin)
County of Oneida)ss

I Kip W Soder registered land surveyor in the State of Wisconsin, hereby certify that I have surveyed subdivided and run the boundary lines shown hereon and set the established corners in Section 10 Township 39 North Range 11 East, Fourth Principal Meridian Oneida County Wisconsin in accordance with the rules of survey of the public lands and with the statutes of the State of Wisconsin The plat map and survey notes are an accurate representation of the corners recovered and established



Kip W. Soder

 Soder Surveying
 Kip W Soder
 R L S State of Wisconsin
 Certificate No S-1731

Date of Survey February 1989 - July 1989

Survey requested by

Don Jorde

 District Ranger

1/5/90

 Date

11092

11092