

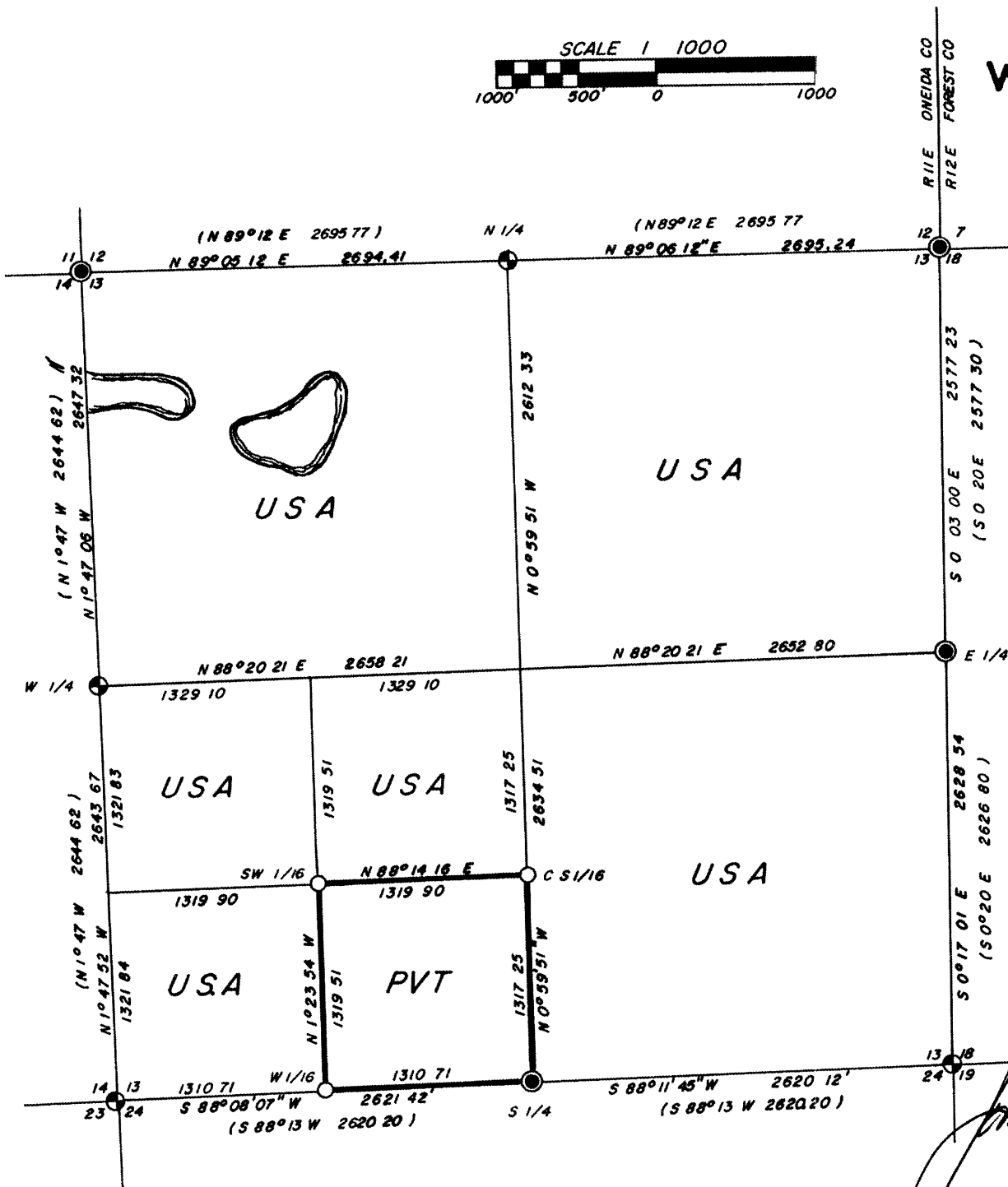
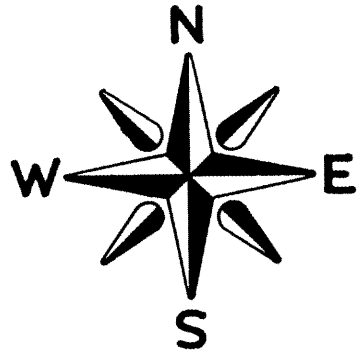
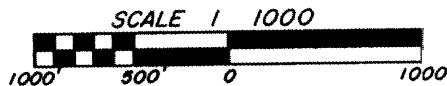


Stock No 26273

# PLAT OF SURVEY US GOVERNMENT LAND

Sheet 1 of 6

BEING SECTION 13 EXCEPT THE SE 1/4 OF THE SW 1/4, TOWNSHIP 39 NORTH,  
RANGE 11 EAST, FOURTH PRINCIPAL MERIDIAN, ONEIDA COUNTY,  
WISCONSIN



**WISCONSIN**  
JAMES R GROTHMAN  
S 1321  
PORTAGE  
WI  
LAND SURVEYOR  
*James R Grothman*  
10/16/86

### LEGEND

- FOUND 6 DIA GLO CONCRETE MONUMENT w/BRASS CAP & EMBEDDED IRON ROD
- FOUND 2 DIA G.L.Q. IRON PIPE w/BRASS CAP
- SET 1 DIA X 60 LONG BERNTSEN ALUMINUM PIPE MONUMENT w/ALUM CAP
- U.S. GOVERNMENT LAND BOUNDARY LINE MARKED AND POSTED TO USFS STANDARD
- LAKE BOUNDARY
- PUBLISHED G L O DEPENDENT RESURVEY INFORMATION

RECEIVED  
FILED #  
On file in County Surveyor's Office  
JUL 16 1990  
By  
X1  
OCS 183-1

LI 094



Stock No 26273

T 39 N R 11 E, SECTION 13

Sheet 2 of 6

SURVEY NOTES

This survey is made by GENERAL ENGINEERING COMPANY, INC pursuant to United States Department of Agriculture, Forest Service Contract "No 53-56A6-6-00020, Cadastral Survey" for the purpose of recovering, restoring, establishing, marking and perpetuating the corners and boundary lines of the U S Government land on the perimeter and within Section 13, T39N, R11E, Fourth Principal Meridian, Oneida County, Wisconsin as shown on the plat herewith

The original government survey of the township was made in 1859, by William F Daugherty

The U S Government acquired title to the lands in Section 13, in 1930 and 1939

This township was resurveyed by the General Land Office in 1941

Bearings between corner positions are true bearings by reference to a solar observation All distances shown thereon are in feet and hundredths of feet The control traverse was measured by use of electronic distance measuring equipment to an accuracy of one part in 20,000 Corners recovered, restored and established by this survey are marked by the monument described in the map legend Each monumented corner position is referenced to blazed and scribed bearing trees and described reference objects

CORNERS RECOVERED1 Corner to Sections 12&13, T39N R11E and Section 7&18, T39N R12E

Corner is monumented by a G L O brass cap

## Corner References

Red Pine	10"	N19 <sup>0</sup> F	107 58 feet
White Pine	14"	N11 <sup>0</sup> F	98 97 feet
Red Pine	7"	N6 <sup>0</sup> F	93 31 feet

2 Quarter Corner to Sections 12 & 13

Corner is monumented by a G L O brass cap

## Corner References

Norway Pine	17"	N11 <sup>0</sup> F	25 50 feet
Norway Pine	17"	S12 <sup>0</sup> F	23 83 feet
Maple	7"	N70 <sup>0</sup> W	35 58 feet
White Birch	7"	N63 <sup>0</sup> E	15 51 feet
Steel Sign Post		Northeast	2 00 feet

L1094

Stock No 26273

Sheet 3 of 6

## T 39 " P 11 " , SECTION 13

3 Quarter Corner to Section 13-18

Corner is monumented by a C I O brass cap

## Corner References

Cedar	10"	N50 <sup>0</sup> W	12 80 feet
Cedar	10"	S85 <sup>0</sup> W	16 33 feet
Cedar	9"	S66 <sup>0</sup> E	13 87 feet
Spruce	7"	N62 <sup>0</sup> E	12 48 feet
Steel Sign Post		West	0 50 foot

4 Quarter Corner to Section 13-24

Corner is monumented by a C I O brass cap

## Corner References

Jack Pine	15"	N84 <sup>0</sup> E	39 10 feet
Norway Pine	13"	N47 <sup>0</sup> W	48 18 feet
Poplar	9"	S62 <sup>0</sup> E	15 79 feet
Hemlock	12"	N56 <sup>0</sup> E	5 25 feet
Steel Sign Post		East	1 00 foot

5 Corner to Sections 13&24, T39N R11E and Section 18 19, T39N R12E

Corner is monumented by a C L O brass cap, restored and documented by Jean F Resvick on 27 April, 1965

## Corner References

Red Pine	10"	N71 <sup>0</sup> E	14 43 feet
Red Pine	12"	S27 <sup>0</sup> E	25 54 feet
Red Pine	10"	S31 <sup>0</sup> W	10 77 feet
Red Pine	8"	N67 <sup>0</sup> W	20 20 feet
Steel Sign Post		Southwest	1 00 foot

6 Corner to Section 13, 14, 23, and 24, T39N R11E

Corner is monumented by a G L O brass cap Restored and documented by John H Fisher, 3, July 1984

## Corner References

Red Pine	18"	N46 <sup>0</sup> W	66 70 feet
Black Spruce	7"	S66 <sup>0</sup> W	16 25 feet
Tamarac	6"	S10 <sup>0</sup> W	24 47 feet
Black Spruce	5"	S54 <sup>0</sup> E	5 00 feet

Stock No 26273

Sheet 4 of 6

T 39 N R 11 E, SECTION 13

7 Corner to Sections 11, 12, 13 and 14, T39N R11E

Corner is monumented by a C I O brass cap Re-tored and documented by  
John H. Fisher, 27, August 1984

## Corner References

Red Pine	20"	S66°E	41 70 feet
Red Pine	9"	N25°E	13 44 feet
Red Pine	10"	S32°W	11 55 feet
Red Pine	12"	N27°W	15 70 feet

8 Quarter Corner to Sections 14 and 13, T39N R11E

Corner is monumented by a C I O brass cap Re-tored and documented by  
John H. Fisher 27 August 1984

## Corner References

Red Pine	14"	N8°E	41 20 feet
White Pine	7"	N44°E	8 30 feet
White Birch	8"	N47°W	21 30 feet
White Pine	6"	N76°W	19 20 feet
White Pine	6"	S80°W	17 70 feet

16017

Stock No 26273

T 39 N R 11 E, SECTION 13

Sheet 5 of 6

CORNERS ESTABLISHED1 West 1/16 to Sections 13-24

Corner is monumented by a 1"x60" aluminum pipe with a 3" aluminum tablet stamped to identify corner. The corner is set at the midpoint and on line between the Corner to Sections 13-14-23-24 and the Quarter Corner to Sections 13 and 24.

## Corner References

Tamarack	7"	S54°E	26 27 feet
Spruce	4"	S7°W	16 43 feet
Spruce	4"	N37°W	10 95 feet
Steel Sign Post		South	1 00 feet

2 Southwest 1/16 Corner, Section 13

Corner is monumented by a 1"x36" aluminum pipe with a 3" aluminum tablet stamped to identify corner. The corner is set at the intersection of the North-South 1/16 line and the East-West 1/16 line, Southwest Quarter Section 13.

## Corner References

Red Pine	6"	N25°W	33 41 feet
Poplar	10"	S74°E	24 60 feet
Jack Pine	8"	N49°E	28 00 feet
Steel Sign Post		South west	1 00 foot

3 Center-South 1/16 Corner to Section 13

Corner is monumented by a 1"x60" aluminum pipe with a 3" aluminum tablet stamped to identify corner. The corner is on line and at the midpoint between the Center 1/4 Corner Section 13 and the Quarter Corner to Sections 13-24.

## Corner References

Tamarack	5"	S67°E	56 08 feet
Tamarack	4"	S18°E	63 39 feet
Tamarack	4"	S80°W	49 31 feet
Steel Sign Post		East	1 00 foot ±

L1094

Stock No 26273

T 39 N R 11 E, SECTION 13

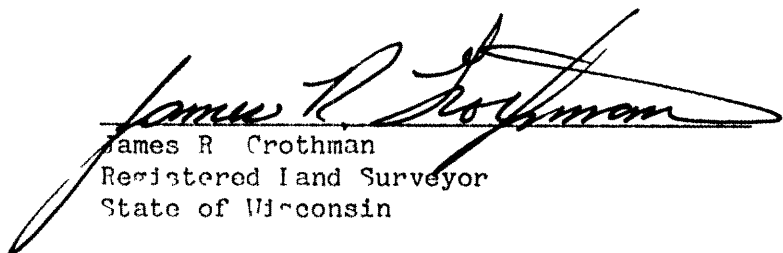
SURVEYOR'S AFFIDAVIT

State of Wisconsin)

ss

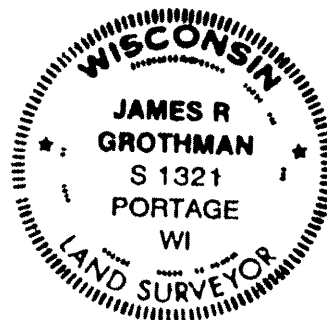
County of Columbia)

I, James R Grothman, Land Surveyor, Registered in the State of Wisconsin, hereby certify That I have surveyed and subdivided section 13, T39N, R11E, Fourth Principal Meridian, County of Forest, State of Wisconsin, in accordance with the rules of the survey of public lands and with the statutes of the State of Wisconsin. The plat map and survey notes are an accurate representation of the corners recovered and established.

  
James R Grothman  
Registered Land Surveyor  
State of Wisconsin

Certificate No 1321

Date of Survey June-September 1986



Plat ready for filing

  
District Ranger

1/6/87  
Date