

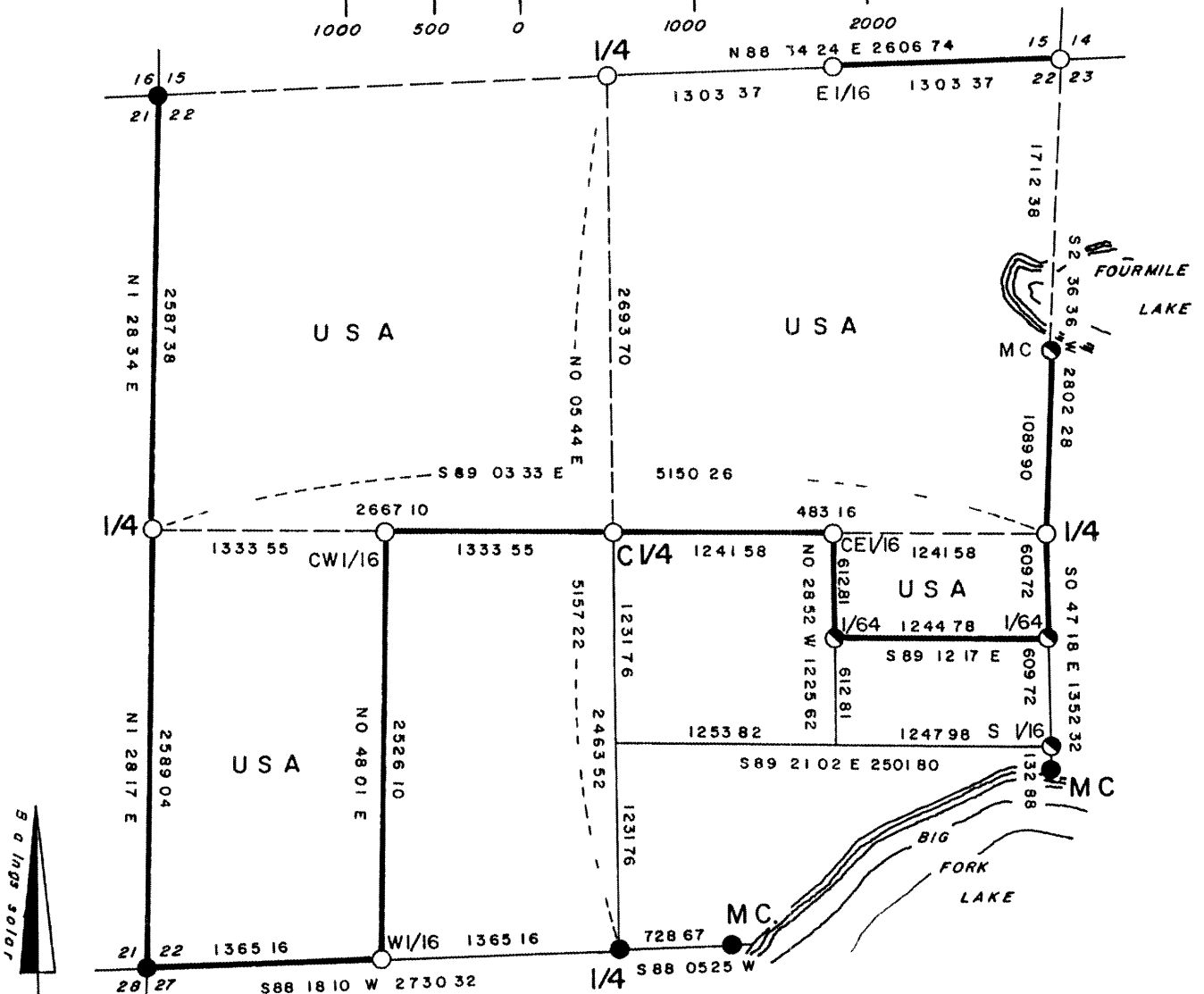
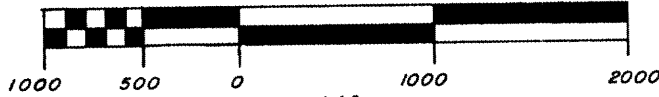


Stock No 26273

PLAT OF SURVEY U S GOVERNMENT LAND

Being the N 1/2, W 1/2 of the SW 1/4 and the N 1/2 of GOV'T LOT 1
Section 22
Township 39 North, Range 11 East, Fourth Principal Meridian
County of Oneida, State of Wisconsin

SCALE 1 1000



3 9 1/2 Ings solar

NORTH COUNTRY SURVEYORS

LEGEND

- 6 round concrete monument with brass tablet found in place
- 2 iron pipe with brass tablet found in place
- Corner position marked by 2 inside diameter 3 foot long aluminum pipe capped with a 3 diameter aluminum tablet stamped to identify corner
- Corner position marked by 2 inside diameter 5 foot long aluminum pipe capped with a 3 diameter aluminum tablet stamped to identify corner
- Boundary U S Government Land

John H. Fisher
John H Fisher R L S S 836

Dated 12/19/84

REC'D & FILED
JUL 16 1980
JUL 16 1980
D anby Den ls B R 13

L1096

L1096



Stock No 26273

SURVEY NOTES

This survey was made by North Country Surveyors pursuant to United States Department of Agriculture, Forest Service Contract "No 53-56A6-4-00035, Cadastral Survey" for the purpose of recovering, restoring, establishing, marking and perpetuating the corners and boundary line of the U S Government land on the perimeter and within Section 22, T39N, R11L, Fourth Principal Meridian, Oneida County, Wisconsin as shown on the plat herewith

The original Government subdivision survey of this township was made by William E Daugherty in 1859

Two separate Dependent Resurveys have been made tying and establishing various corners of Section 22 One of those surveys was made by Guy R Veal, U S Cadastral Engineer and dated June 21, 1926 This survey was made to define omitted lands within Section 23 The second re-survey affecting the area is a resurvey of the East half of T39N, R11E, and was completed by Hugh D Crawford, Cadastral Surveyor on October 18, 1941 Monuments established in these surveys were recovered and this along with the notes of the survey are the basis for this survey

Bearings between corner positions are true bearings by reference to a solar observation All distances shown thereon are in feet and hundredths of feet The control traverse was measured by use of electronic distance measuring equipment Corners recovered, restored and established by this survey are marked by the monument described in the map legend Each monumented corner position is referenced to blazed and described bearing trees and described objects

CORNERS RECOVERED

- 1 The corner to Section 14, 15, 22 and 23

Corner is monumented by a 2" iron pipe capped with a brass tablet as established by the Bureau of Land Management in the 1926 Dependent Resurvey

Corner References

Nail in Hemlock	15"	N58°W	27 80 feet
Nail in White Pine	22"	N23°W	24 00 feet
Nail in Cedar	9"	S42°W	32 35 feet
Nail in Hemlock	22"	S82°E	53 60 feet
Steel sign post		East	1 5 feet

- 2 Corner to Sections 15, 16, 21 and 22

Corner is monumented by a 6" diameter concrete monument with a brass tablet established by the Bureau of Land Management in the 1941 Dependent Resurvey



Stock No 26273

Corner References

Nail in Oak	7"	S65°E	25 8 feet
Nail in White Birch	8"	S15°W	21 3 feet
Nail in Oak	5"	N32°W	26 5 feet
Nail in Oak	12"	N7°L	42 6 feet
Wood sign post		NL	1 5 feet

3 Corner to Sections 21, 22, 27 and 28

Corner is monumented by a 6" diameter concrete monument with a brass tablet established by the Bureau of Land Management in the 1941 Dependent Resurvey

Corner References

Nail in Hemlock	13"	N 8°W	38 1 feet
Nail in Hemlock	16"	N44°L	50 5 feet
Nail in Red Maple	10"	S22°W	25 3 feet
Nail in Yellow Birch	9"	N12°E	17 1 feet
Wood sign post		NE	1 foot

4 Meander Corner to Sections 22 and 27

Corner is monumented by a 6" diameter concrete monument with a brass tablet established by the Bureau of Land Management in the 1941 Dependent Resurvey

Corner References

Nail in Red Pine	9"	N65°W	15 3 feet
Nail in White Pine	24"	S29°W	21 6 feet
South Corner of Building		N53°W	8 2 feet
East Corner of Building		N26°E	20 1 feet
1" Iron Pipe		N85°E	0 4 feet

5 South Meander Corner to Sections 22 and 23

Corner is monumented by a 6" diameter concrete monument with a brass tablet established by the Bureau of Land Management in the 1941 Dependent Resurvey

Corner References

Nail in Red Pine	17"	N19°W	22 0 feet
Nail in Red Pine	14"	N41°E	38 2 feet
Nail in White Pine	7"	N69°W	18 2 feet
Nail in Red Pine	6"	N64°E	3 9 feet
Steel sign post		S 8°W	1 5 feet

6 Quarter Corner to Sections 22 and 23

Corner is monumented by a 2" iron pipe capped with a brass tablet as established by the Bureau of Land Management in the 1926 Dependent Resurvey

Stock No 26273

Corners Reference

Nail in White Pine	26'	N38°E	19 88 feet
Nail in White Pine	8'	N81°E	29 00 feet
Nail in Red Maple	13"	N47°W	16 83 feet
Nail in White Birch	14"	N17°W	18 40 feet
Wood post		N65°W	0 9 feet

7 Quarter Corner to Sections 15 and 22

Corner is monumented by a 2" iron pipe capped with a brass tablet as established by the Bureau of Land Management in the 1941 Dependent Resurvey

Corner References

Nail in White Birch	8"	S87°E	20 6 feet
Nail in White Birch	10"	S 8°E	32 21 feet
Nail in White Birch	7"	S16°W	27 52 feet
Nail in Balsam	5"	S39°W	27 80 feet
Steel sign post		West	0 8 feet

8 Quarter Corner to Sections 21 and 22

Corner is monumented by a 2" iron pipe capped with a brass tablet as established by the Bureau of Land Management in the 1941 Dependent Resurvey

Corner References

Nail in White Birch	6"	S29°W	21 8 feet
Nail in Red Maple	8"	S23°E	48 8 feet
Nail in White Birch	7"	N66°W	17 9 feet
Nail in Red Maple	7"	N 2°W	27 9 feet
Wood sign post		NE	1 foot

9 Quarter Corner to Sections 22 and 27

Corner is monumented by a 6" diameter concrete monument with a brass tablet established by the Bureau of Land Management in the 1941 Dependent Resurvey

Corner References

Nail in Red Pine	20'	N80°E	15 9 feet
Nail in Red Pine	17"	S52°W	37 8 feet
Nail in White Pine	14"	S 1°W	33 5 feet
2" iron pipe		North	0 4 feet
Steel sign post		West	1 3 feet

CORNERS ESTABLISHED1 East Sixteenth Corner to Sections 15 and 22

Corner position established at midpoint and on line between the North Quarter Corner and the Northeast Section Corner of Section 22

Corner is monumented by a 2" aluminum pipe five feet long with a 3" diameter aluminum tablet stamped to identify the corner

Stock No 26273

Corner References

Nail in Tamarack	6"	S 8°E	20 40 feet
Nail in Tamarack	5"	S87°W	21 60 feet
Nail in Tamarack	4"	N44°E	21 61 feet

2 Special Meander Corner to Sections 22 and 23

Corner established on line on the southerly shore of Fourmile Lake between the East Quarter Corner and Northeast Section Corner of Section 22

Corner is monumented by a 2" aluminum pipe three feet long with a 3" diameter aluminum tablet stamped to identify the corner

Corner References

Nail in Red Maple	11'	N75°W	14 31 feet
Nail in White Pine	11"	N 7°W	16 04 feet
Nail in Red Pine	12"	S58°E	23 67 feet
Steel sign post		North	1 0 feet

3 South One Sixteenth Corner to Sections 22 and 23

At intersection of Section 23 with a line running easterly from the Center South One Sixteenth on a weighted mean bearing between the east half of the East-West One Quarter line and the line from the South Quarter Corner to the meander corner on the West Shore of Big Fork Lake

Corner is monumented by a 2" aluminum pipe three feet long with a 3" diameter aluminum tablet stamped to identify the corner

Corner References

Nail in Sugar Maple	5"	N84°W	8 6 feet
Nail in Red Maple	7"	S45°W	7 1 feet
Nail in Sugar Maple	7"	N53°E	12 2 feet
Steel sign post		North	1 2 feet

4 North - South One Sixty Fourth Corner

Corner position established at midpoint and on line between the East Quarter Corner and the South One Sixteenth Corner of Section 22

Corner is monumented by a 2" aluminum pipe three feet long with a 3" diameter aluminum tablet stamped to identify the corner

Corner References

Nail in Sugar Maple	9"	N12°E	19 2 feet
Nail in Red Pine	6"	N38°W	22 1 feet
Nail in Sugar Maple	17"	N80°W	77 7 feet
Steel sign post		North	7 2 feet

Stock No 26273

5 West Sixteenth Corner to Sections 22 and 27

Corner position established at midpoint and on line between the South Section Corner and South Quarter of Section 22

Corner is monumented by a 2" aluminum pipe five feet long with a 3" diameter aluminum tablet stamped to identify the corner

Corner References

Nail in Tamarack	3"	S47°E	38 6 feet
Nail in Black Spruce	4"	N25°E	44 3 feet
Nail in Tamarack	4"	N55°W	54 8 feet
Steel sign post		West	0 9 feet

6 Center Quarter Corner

Corner position established at the intersection of the straight lines between opposing 1941 Dependent Resurvey Quarter Corners on the perimeter of Section 22

Corner is monumented by a 2" aluminum pipe five feet long with a 3" diameter aluminum tablet stamped to identify the corner

Corner References

Nail in Black Spruce	5"	S56°W	15 8 feet
Nail in Black Spruce	3"	N46°W	14 5 feet
Nail in Black Spruce	4"	N65°E	18 9 feet
Steel sign post		West	0 9 feet

7 Center West One Sixteenth

Corner position established at midpoint and on line between the Center Quarter Corner and West Quarter Corner of Section 22

Corner is monumented by a 2" aluminum pipe five feet long with a 3" diameter aluminum tablet stamped to identify the corner

Corner References

Nail in Cedar	5"	N71°E	14 6 feet
Nail in Cedar	10'	S33°E	13 3 feet
Nail in Cedar	7"	S16°W	6 6 feet
Steel sign post		South	2 4 feet

8 Center East Sixteenth

Corner position established at midpoint and on line between the Center Quarter Corner and East Quarter Corner of Section 22



Stock No 26273

Corner is monumented by a 2' aluminum pipe five feet long with a 3" diameter aluminum tablet stamped to identify the corner

Corner References

Nail in White Pine	8"	S24°W	23 2 feet
Nail in White Pine	12"	N70°E	27 3 feet
Nail in Black Spruce	3"	N13°W	10 7 feet
Steel Sign Post		West	1 7 feet

9 CN - SE One Sixty Fourth Corner

Corner position established at midpoint and on line between the Center East One Sixteenth Corner and Southeast One Quarter Corner

Corner is monumented by a 2" aluminum pipe three feet long with a 3" diameter aluminum tablet stamped to identify corner

Corner References

Nail in Sugar Maple	6"	N60°E	23 1 feet
Nail in Sugar Maple	7"	S53°E	27 3 feet
Nail in Sugar Maple	17'	N87°W	28 7 feet
Steel sign post		North	0 8 feet

Plat ready for filing *Frank Huber* District Ranger

SURVEYOR'S AFFIDAVIT

State of Wisconsin)
County of Oneida)^{ss}

I, John H Fisher, Land Surveyor, registered in the State of Wisconsin, hereby certify that I have surveyed and subdivided Section 22, T39N, R11E, Fourth Principal Meridian, County of Oneida, State of Wisconsin, in accordance with the rules of the survey of the public lands and with the statutes of the State of Wisconsin. The plat map and survey notes are an accurate representation of the corners recovered and established.

John H Fisher
Registered Land Surveyor State of Wisconsin

Dated *December 19, 1984*

Certificate No S-836

Date of Survey April - December 1984